



翠谷工程有限公司  
Green Valley Landfill, Limited

## South East New Territories (SENT) Landfill Extension

### Quarterly Environmental Monitoring & Audit Report No.2

August 2019

**ERM**

2507, 25/F  
One Harbourfront  
18 Tak Fung Street  
Hung Hom, Kowloon  
Hong Kong  
T: 2271 3000  
F: 2723 5660  
[www.erm.com](http://www.erm.com)





翠谷工程有限公司  
Green Valley Landfill, Limited

## South East New Territories (SENT) Landfill Extension

### Environmental Certification Sheet EP-308/2008/B and FEP-01/308/2008/B

#### Reference Document/Plan

Document/Plan to be Certified/Verified:	Quarterly Environmental Monitoring & Audit Report No.2 for South East New Territories (SENT) Landfill Extension
Date of Report:	16 August 2019

#### Reference EM&A Manual Requirement

EM&A Manual:	Section 11.4
The quarterly EM&A summary report shall be prepared by the ET, certified by the ET Leader and verified by the IEC. The quarterly EM&A summary report should contain all information listed under Section 11.4 of the approved EM&A Manual.	

#### ET Certification

I hereby certify that the above referenced document/plan complies with the above referenced EM&A Manual requirement.

Frank Wan,  
Environmental Team Leader:  
(ERM Hong-Kong, Limited)

Date: 16 August 2019

#### IEC Verification

I hereby verify that the above referenced document/plan complies with the above referenced EM&A Manual requirement.

Fredrick Leong,  
Independent Environmental Checker:  
(Meinhardt Infrastructure and  
Environment Limited)




Date: 19 Aug 2019

# South East New Territories (SENT) Landfill Extension

## Quarterly Environmental Monitoring & Audit Report No.2

### Environmental Resources Management

2507, 25/F, One Harbourfront  
18 Tak Fung Street  
Hung Hom, Kowloon  
Hong Kong  
Telephone: (852) 2271 3000  
Facsimile: (852) 2723 5660  
E-mail: post.hk@erm.com  
http://www.erm.com

Client:  Green Valley Landfill Ltd.		Project No:  0465169			
Summary:  This document presents the Quarterly EM&A Report No.2 for <i>South East New Territories (SENT) Landfill Extension</i>		Date: 16 August 2019			
		Approved by:   Frank Wan Partner			
1	Quarterly EM&A Report No.2 (Table 2.12 revised)	AL	TS	FW	16 Aug 19
0	Quarterly EM&A Report No.2	AL	TS	FW	23 July 19
Revision	Description	By	Checked	Approved	Date
<p>This report has been prepared by Environmental Resources Management the trading name of 'ERM Hong-Kong, Limited', with all reasonable skill, care and diligence within the terms of the Contract with the client, incorporating our General Terms and Conditions of Business and taking account of the resources devoted to it by agreement with the client.</p> <p>We disclaim any responsibility to the client and others in respect of any matters outside the scope of the above.</p> <p>This report is confidential to the client and we accept no responsibility of whatsoever nature to third parties to whom this report, or any part thereof, is made known. Any such party relies on the report at their own risk.</p>		<p>Distribution</p> <p><input type="checkbox"/> Internal</p> <p><input checked="" type="checkbox"/> Public</p> <p><input type="checkbox"/> Confidential</p> <div style="text-align: right;">    </div>			

## CONTENTS

	<b>EXECUTIVE SUMMARY</b>	<b>1</b>
<b>1</b>	<b>INTRODUCTION</b>	<b>1</b>
1.1	BACKGROUND	1
1.2	PROJECT DESCRIPTION	1
1.3	SCOPE OF THE EM&A REPORT	2
1.4	PROJECT ORGANISATION	2
1.5	SUMMARY OF CONSTRUCTION WORKS	3
1.6	SUMMARY OF EM&A PROGRAMME REQUIREMENTS	5
1.7	STATUS OF STATUTORY ENVIRONMENTAL COMPLIANCE WITH THE ENVIRONMENTAL PERMIT	6
1.8	STATUS OF OTHER STATUTORY ENVIRONMENTAL REQUIREMENTS	6
<b>2</b>	<b>EM&amp;A RESULTS</b>	<b>8</b>
2.1	AIR QUALITY MONITORING	8
2.2	NOISE MONITORING	10
2.3	SURFACE WATER QUALITY MONITORING	12
2.4	LANDSCAPE AND VISUAL MONITORING	14
2.5	EM&A SITE INSPECTION	15
2.6	WASTE MANAGEMENT STATUS	18
2.7	IMPLEMENTATION STATUS OF ENVIRONMENTAL MITIGATION MEASURES	19
2.8	SUMMARY OF EXCEEDANCES OF THE ENVIRONMENTAL QUALITY PERFORMANCE LIMIT	19
2.9	SUMMARY OF COMPLAINTS, NOTIFICATION OF SUMMONS AND SUCCESSFUL PROSECUTIONS	19
<b>3</b>	<b>CONCLUSION AND RECOMMENDATION</b>	<b>20</b>

## *ANNEXES*

*ANNEX A WORK PROGRAMME*

*ANNEX B ENVIRONMENTAL MITIGATION IMPLEMENTATION SCHEDULE*

*ANNEX C MONITORING SCHEDULE FOR THIS REPORTING PERIOD*

*ANNEX D AIR QUALITY*

*ANNEX D1 24-HOUR TSP MONITORING RESULTS*

*ANNEX D2 EVENT AND ACTION PLAN FOR DUST MONITORING*

*ANNEX D3 METEOROLOGICAL DATA*

*ANNEX E NOISE*

*ANNEX E1 NOISE MONITORING RESULTS*

*ANNEX E2 EVENT AND ACTION PLAN FOR NOISE MONITORING*

*ANNEX F SURFACE WATER QUALITY*

*ANNEX F1 SURFACE WATER QUALITY MONITORING RESULTS*

*ANNEX F2 EVENT AND ACTION PLAN FOR SURFACE WATER QUALITY  
MONITORING*

*ANNEX F3 INVESTIGATION REPORTS OF ENVIRONMENTAL QUALITY LIMIT  
EXCEEDANCE*

*ANNEX G CUMULATIVE STATISTICS ON EXCEEDANCES, ENVIRONMENTAL  
COMPLAINTS, NOTIFICATION OF SUMMONS AND STATUS OF  
PROSECUTIONS*

## **EXECUTIVE SUMMARY**

The SENT Landfill Extension (SENTX) forms an integral part in the Strategic Plan in maintaining the continuity of landfill capacity in the Hong Kong for the cost-effective and environmentally satisfactory disposal of waste. ERM-Hong Kong, Limited (ERM) is commissioned to undertake the role of Environmental Team (ET) for the construction, operation/restoration and aftercare of SENTX Project (“the Project”) in accordance with the requirements specified in the Environmental Permit (EP), updated Environmental Monitoring and Audit (EM&A) Manual, the approved Environmental Impact Assessment (EIA) Report of the Project taking account of the latest design and other relevant statutory requirements. The construction (not including works related to site clearance and preparation) of the Project commenced on 2 January 2019.

This Quarterly EM&A report presents the EM&A works carried out during the period from 1 April to 30 June 2019 for the Project in accordance with the updated EM&A Manual.

### **Exceedance of Action and Limit Levels for Air Quality**

No exceedance of Action and Limit Levels for construction air quality monitoring was recorded in the reporting period.

### **Exceedance of Action and Limit Levels for Noise**

No exceedance of Action and Limit Levels for construction noise monitoring was recorded in the reporting period.

### **Exceedance of Action and Limit Levels for Surface Water Quality**

2 exceedances of the Limit Level for DO, 8 exceedances of the Limit Level for pH and 11 exceedances of the Limit Level for Suspended Solids (SS) were recorded for surface water quality impact monitoring in the reporting period. The exceedances were considered not Project-related upon further investigations, except the pH and SS exceedances at DP4 (Future, temporary) and SS exceedance at DP6 on 23 May 2019 were found deemed to Project-related activities.

### **Environmental Complaints, Summons and Prosecutions**

There were no complaints, notification of summons or prosecution recorded in the reporting period.

### **Reporting Change**

There was no reporting change in the reporting period.

# 1 INTRODUCTION

## 1.1 BACKGROUND

The SENT Landfill Extension (SENTX) forms an integral part in the Strategic Plan in maintaining the continuity of landfill capacity in the Hong Kong for the cost-effective and environmentally satisfactory disposal of waste. The *Environmental Impact Assessment (EIA) Report* and the associated *Environmental Monitoring and Audit (EM&A) Manual* for the construction, operation, restoration and aftercare of the SENTX (hereafter referred to as “the Project”) have been approved under the *Environmental Impact Assessment Ordinance (EIAO)* in May 2008 (Register No.: AEIAR-117/2008) (hereafter referred to as the approved EIA Report) and an Environmental Permit (EP-308/2008) (EP) was granted by the Director of Environmental Protection (DEP) on 5 August 2008.

Since then, applications for Variation of an Environmental Permit (No. VEP-531/2017) were submitted to EPD and the Variation of Environmental Permits (EP-308/2008/A and EP-308/2008/B) were granted on 6 January 2012 and 20 January 2017, respectively, as the Hong Kong SAR Government has decided to reduce the scale of the design scheme of SENTX assessed in the approved EIA Report and SENTX will only receive construction waste. In May 2018, a Further Environmental Permit (FEP) (FEP-01/308/2008/B) was granted to the SENTX’s contractor, Green Valley Landfill, Limited (GVL).

ERM-Hong Kong, Limited (ERM) and Meinhardt Infrastructure and Environment Limited (Meinhardt) are commissioned to undertake the roles of Environmental Team (ET) and the Independent Environmental Checker (IEC), respectively, to undertake the EM&A activities for the Project in accordance with the requirements specified in the EP, updated EM&A Manual <sup>(1)</sup>, approved EIA Report <sup>(2)</sup> taking account of the latest design and other relevant statutory requirements.

## 1.2 PROJECT DESCRIPTION

The SENTX is a piggyback landfill, occupying the southern part of the existing SENT Landfill (including its infrastructure area) and 13 ha of Tseung Kwan O (TKO) Area 137. A layout plan of the SENTX is shown in *Figure 1.1*. Under the latest design, the SENTX has a net void capacity of about 6.5 Mm<sup>3</sup> and provides an additional lifespan of about 6 years, commencing operation upon exhaustion of the SENT Landfill. The SENTX will receive construction waste only.

The key implementation milestones of the Project are indicatively summarised in *Table 1.1*. The construction works of the Project commenced on 2 January 2019.

- (1) ERM (2018). South East New Territories (SENT) Landfill Extension: Environmental Monitoring & Audit Manual  
(2) ERM (2007). South East New Territories (SENT) Landfill Extension - Feasibility Study: Environmental Impact Assessment Report





Figure 1.1

Layout Plan of SENTX

File: T:\GIS\CONTRACT\0354924\Mxd\0354924\_Layout\_Plan\_of\_SENTX.mxd  
 Date: 5/9/2018



**Table 1.1** *Estimated Key Dates of Implementation Programme*

<b>Key Stage of the Project</b>	<b>Indicative Date</b>
Start construction	2 January 2019
Commissioning of new infrastructure facilities	2020
Demolition of existing infrastructure facilities	2021
Start waste intake at SENTX	2021 or upon exhaustion of SENT Landfill
Estimated exhaustion date of SENTX	2027
End of aftercare for SENTX	2057

The major construction works of the SENTX includes:

- Site formation at the TKO Area 137 and the existing infrastructure area at SENT Landfill;
- Construction of surface and groundwater drainage systems;
- Construction of the leachate containment and collection systems;
- Construction of new leachate and landfill gas treatment facilities, site offices, maintenance yards at the new infrastructure area;
- Construction of new pipelines to transfer the leachate and landfill gas collected from the existing SENT Landfill to the treatment facilities at the new infrastructure area;
- Construction of the site access and new waste reception facilities; and
- Demolition of the facilities at the existing SENT Landfill infrastructure area.

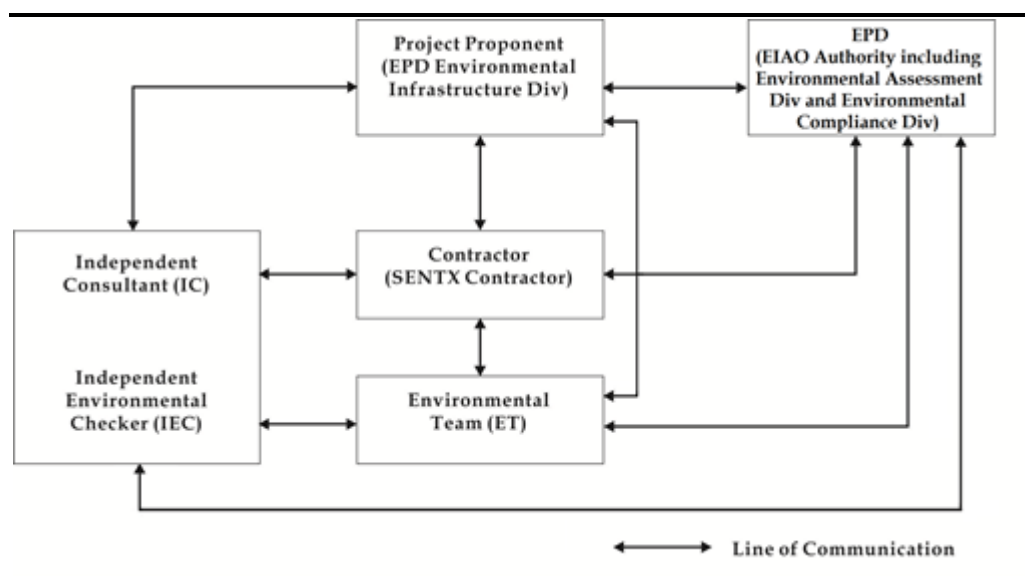
### **1.3** *SCOPE OF THE EM&A REPORT*

This is the Quarterly EM&A Report for the Project which summarises the key findings of the EM&A programme during the reporting period from 1 April to 30 June 2019 for the construction works.

### **1.4** *PROJECT ORGANISATION*

The organisation structure of the Project is presented in *Figure 1.2*.

Figure 1.2 Organisation Chart



Contact details of the key personnel are summarized in *Table 1.2* below.

*Table 1.2 Contact Information of Key Personnel*

Party	Position	Name	Telephone
Contractor (Green Valley Landfill Limited)	Project Manager	Gary Barnicott	2706 8827
	Complaint Hotline		2706 8682
Environmental Team (ET) (ERM-Hong Kong, Limited)	ET Leader	Frank Wan	2271 3152
Independent Environmental Checker (IEC) (Meinhardt Infrastructure and Environment Limited)	IEC	Fredrick Leong	2859 1739

## 1.5 SUMMARY OF CONSTRUCTION WORKS

The programme of the construction is shown in *Annex A*. As informed by the Contractor, the major works carried out in this reporting period include:

### April 2019

- Initial site clearance works, geotechnical review and utilities diversion on the buttress wall;
- Erection of temporary protection and application of the initial shotcrete panel;
- Shotcreting of the permanent works;
- Excavating, removing and replacing unsuitable fill material;
- Plate load tests;

- Rebar fixing and concreting to the sediment trap and culvert X9;
- Site formation works for SENTX Infrastructure Area;
- Construction of perimeter bund for Cells 1 and 2;
- Construction of additional wheel wash facilities;
- Preparation of the temporary surface water management, including construction of temporary discharge monitoring points DP4 and DP6, shotcrete lining of the DP4 channel, cut-off channel around SENTX and temporary drainage to DP4 and DP6 channels; and
- Boundary fencing erection.

#### May 2019

- Construction of perimeter bund - Cell 1;
- Construction of perimeter bund - Cell 2;
- Construction of sediment trap; and
- Construction of outlet box culvert.

#### June 2019

- Rebar fixing and formwork erection for the plinth and control building for Leachate Treatment Plant (LTP) area;
- Erection of temporary protection and application of initial shotcrete trial panel at buttress wall;
- Shotcreting of the permanent works;
- Excavating, removing and replacing unsuitable fill material;
- Rebar fixing, formwork and concreting to the sediment trap, drop inlet shaft, MHX1 manhole and outlet box culverts;
- Construction of perimeter bund for Cells 1 and 2;
- Preparation of the temporary surface water management, including construction of temporary discharge monitoring points DP4 and DP6, shotcrete lining the of DP4 channel, cut-off channel around SENTX and temporary drainage to DP4 and DP6 channels;
- Laying of groundwater pipe along eastern perimeter bund; and
- CLP trench works at Area X2.

The implementation schedule of the mitigation measures recommended in the Updated EM&A Manual is presented in *Annex B*.

The status for all environmental aspects are presented in *Table 1.3*. The EM&A requirements remained unchanged during the reporting period.

**Table 1.3** *Summary of Status for the Environmental Aspects under the Updated EM&A Manual*

Parameters	Status
<b>Air Quality</b>	
Baseline Monitoring	The results of baseline air quality monitoring were reported in <i>Baseline Monitoring Report</i> and submitted to EPD under EP Condition 3.3
Impact Monitoring	On-going
<b>Noise</b>	
Baseline Monitoring	The results of baseline noise monitoring were reported in <i>Baseline Monitoring Report</i> and submitted to EPD under EP Condition 3.3
Impact Monitoring	On-going
<b>Surface Water Quality</b>	
Baseline Monitoring	The results of baseline surface water quality monitoring were reported in <i>Baseline Monitoring Report</i> and submitted to EPD under EP Condition 3.3
Impact Monitoring	On-going
<b>Waste Management</b>	
Waste Monitoring	On-going
<b>Landscape and Visual</b>	
Baseline Monitoring	The results of baseline landscape and visual monitoring were reported in <i>Baseline Monitoring Report</i> and submitted to EPD under EP Condition 3.3
Construction Phase Audit	On-going
<b>Site Environmental Audit</b>	
Regular Site Inspection	On-going
Complaint Hotline and Email Channel	On-going
Environmental Log Book	On-going

Taking into account the construction works, impact monitoring of air quality, noise, surface water quality and waste management were carried out in the reporting period. The monitoring schedule of air quality, noise and surface water quality monitoring are provided in *Annex C*.

The EM&A programme also involved environmental site inspections and related auditing conducted by the ET for checking the implementation of the required environmental mitigation measures recommended in the approved EIA Report and relevant EP submissions. To promote the environmental awareness and enhance the environmental performance of the contractors, environmental trainings and regular environmental management meetings were conducted during the reporting period, which are summarised as below:

- Three environmental management meetings were held with the Contractor, ER, ET, IEC and EPD on 11 April, 9 May and 13 June 2019; and
- Environmental toolbox trainings on the following topics were provided by the Contractor to the workers:



- Mosquito Control on 10 April 2019;
- Recycling Measures on 24 April 2019;
- Chemical Waste Handling on 15 May 2019;
- Quality Powered Mechanical Equipment on 28 May 2019;
- Trip Ticket System on 12 June 2019; and
- Green Procurement on 24 June 2019.

## 1.7 STATUS OF STATUTORY ENVIRONMENTAL COMPLIANCE WITH THE ENVIRONMENTAL PERMIT

The status of statutory environmental compliance with the EP conditions under the EIAO, submission status under the EP and implementation status of the recommended mitigation measures are presented in *Table 1.4*.

**Table 1.4** *Status of Submissions required under the EP and Implementation Status of the recommended Mitigation Measures*

EP Condition	Submission / Implementation Status	Status
2.3	Management Organisation of Main Construction Companies	Submitted and accepted by EPD.
2.4	Setting up of Community Liaison Group	Community Liaison Group was set up.
2.5	Submission of Detailed Landfill Gas Hazard Assessment Report	Submitted, and accepted by EPD on 10 January 2019.
2.6	Submission of Restoration and Ecological Enhancement Plan	Submitted to EPD on 28 June 2019.
2.7	Setting up of Trial Nursery	To be set up during construction phase.
2.8	Advance Screen Planting	Works commenced on 21 March 2019 and will be completed within 9 months of taking possession of the Project Site (i.e. before September 2019).
2.9	Provision of Multi-layer Composite Liner System	Under implementation.

## 1.8 STATUS OF OTHER STATUTORY ENVIRONMENTAL REQUIREMENTS

The environmental licenses and permits (including EP, *Water Pollution Control Ordinance* (WPCO) discharge license, registration as a chemical waste producer, and construction noise permit) that are valid in the reporting period are presented in *Table 1.5*. No non-compliance with environmental statutory requirements was identified.

**Table 1.5** *Status of Statutory Environmental Requirements*

Description	Ref No.	Status
Environmental Permit	EP-308/2008	Granted on 5 August 2008

<b>Description</b>	<b>Ref No.</b>	<b>Status</b>
Variation of Environmental Permit	EP-308/2008/A	Granted on 6 January 2012
	EP-308/2008/B	Granted on 20 January 2017
Further Environmental Permit	FEP-01/308/2008/B	Granted on 16 May 2018
Water Discharge License under WPCO (Permit Holder: Chun Wo)	Licence No.: WT00033525-2019	Validity from 27 March 2019 to 31 March 2024
Billing Account for Disposal of Construction Waste	Chit Account Number: 5001692	Approved on 28 December 2005
Registration as a Chemical Waste Producer (Permit Holder: Chun Wo)	5213-839-C3507-10	Issued on 23 August 2018
Construction Noise Permit (Permit Holder: Chun Wo)	GW-RE0404-19	Validity from 28 May 2019 to 22 November 2019
	GW-RE0259-19	Cancelled with effect from 28 May 2019 at 07:00 hrs
	GW-RE0002-19	Cancelled with effect from 15 April 2019 at 07:00 hrs

The EM&A programme for the Project required environmental monitoring for air quality, noise and surface water quality as well as environmental site inspections for air quality, noise, surface water quality, waste management, and landscape and visual impacts. The EM&A requirements and related findings for each component are summarised in the following sections.

## 2.1 AIR QUALITY MONITORING

### 2.1.1 Monitoring Requirements and Equipment

According to the updated EM&A Manual of the Project, impact air quality monitoring (dust, in term of Total Suspended Particulates (TSP)) was carried out at the two designated monitoring locations (i.e. DM1 and DM2) at a 6-day interval. It is proposed and agreed by IEC and EPD that the two existing TSP monitoring stations (i.e. TKO-A1 and TKO-A2a) currently operating by the Civil Engineering and Development Department (CEDD) can be used to monitor the 24-hour TSP impact associated with the SENTX construction. The dust monitoring results were obtained from CEDD on regular basis.

The Action and Limit Levels of the air quality monitoring is provided in *Table 2.1* below.

**Table 2.1** *Action and Limit Levels for 24-hour TSP*

Monitoring Station	Action Level	Limit Level
DM-1 - Site Egress of TKO Area 137 Fill Bank	204 $\mu\text{g m}^{-3}$	260 $\mu\text{g m}^{-3}$
DM-2A -Combined Reception and Exit Office (CREO) of TKO Area 137 Fill Bank	193 $\mu\text{g m}^{-3}$	260 $\mu\text{g m}^{-3}$

High volume air samplers (HVSs) in compliance with the specifications listed under Section 3.2.2 of the updated EM&A Manual were used to measure 24-hour TSP levels at the CEDD dust monitoring stations. The HVSs were calibrated upon installation and thereafter at bi-monthly intervals to check the validity and accuracy of the results.

The equipment used in the impact air quality monitoring programme and monitoring locations are summarised in *Table 2.2* and illustrated in *Figure 2.1* respectively.

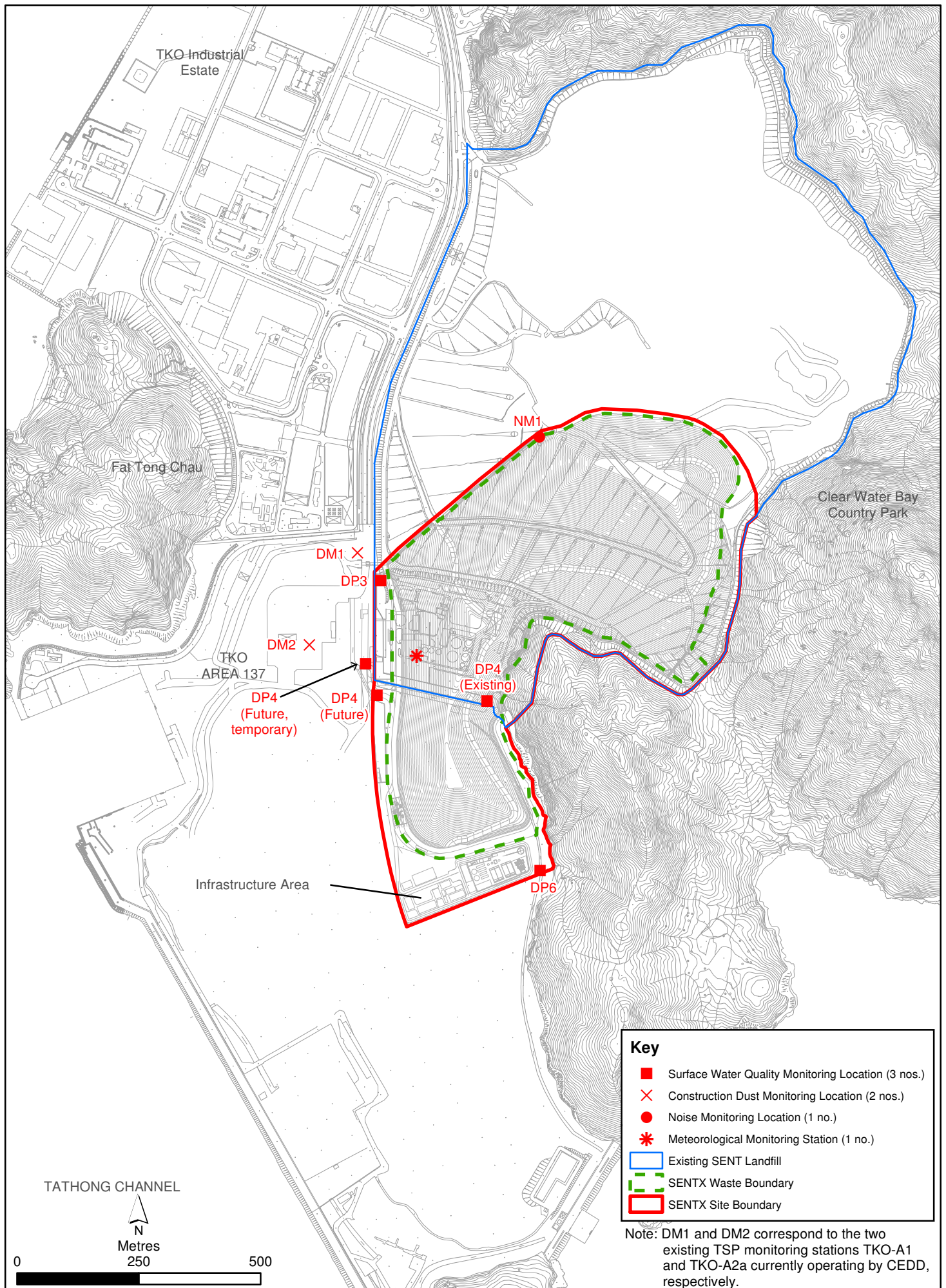


Figure 2.1

Environmental Impact Monitoring Locations

Environmental  
Resources  
Management





**Table 2.2 Dust Monitoring Details**

Monitoring Station	Location	Parameter	Frequency and Duration	Monitoring Dates	Equipment
DM1	Site Egress of TKO Area 137 Fill Bank	24-hour TSP	Once every 6 days during the construction phase of the Project	4, 10, 16, 22, 28 April 2019 4, 10, 16, 22, 28 May 2019	HVS Greasby 105 (S/N: 9795) (ET/EA/003/18)) HVS Andersen G1051 (S/N: 1176) (ET/EA/003/05))
DM2	Combined Reception and Exit Office (CREO) of TKO Area 137 Fill Bank			3, 9, 15, 21, 27 June 2019	

**2.1.2 Monitoring Schedule for the Reporting Period**

The schedule for air quality monitoring during the reporting period is provided in *Annex C*.

**2.1.3 Results and Observations**

The 24-hour TSP monitoring results are summarised in *Table 2.3*. The detailed monitoring results and the graphical presentation of the 24-hour TSP monitoring results at each monitoring location are provided in *Annex D1*.

**Table 2.3 Summary of 24-hour TSP Monitoring Results in the Reporting Period**

Month	Monitoring Station	24-hr TSP Concentration ( $\mu\text{g m}^{-3}$ )		Action Level ( $\mu\text{g/m}^3$ )	Limit Level ( $\mu\text{g/m}^3$ )
		Average	Range		
April 2019	DM-1	89	76 - 100	204	260
	DM-2	77	70 - 91	193	260
May 2019	DM-1	92	73 - 105	204	260
	DM-2	84	68- 103	193	260
June 2019	DM-1	82	63 - 109	204	260
	DM-2	88	64 - 123	193	260

The major dust sources in the reporting period included fugitive dust emission from exposed area in SENTX, as well as nearby operations of the existing SENT landfill and the TKO Area 137 Fill Bank.

All the 24-hour TSP results measured at the two monitoring stations were below the Action and Limit Levels in the reporting period. No additional measure is thus required in accordance with the Event and Action Plan presented in *Annex D2*.

**2.1.4 Meteorological Data**

Meteorological data obtained from the on-site meteorological monitoring station at the existing SENT landfill (see *Figure 2.1*) were used for the dust monitoring and are shown in *Annex D3*. The meteorological station will be moved to a new location at SENTX infrastructure area as per the updated EM&A Manual after the construction of the new infrastructure area is completed. For the purpose of this EM&A programme, it is considered that

meteorological data obtained at the existing SENT landfill meteorological monitoring station are representative of the Project area and could be used for the interpretation of the construction phase dust monitoring results.

## 2.2 NOISE MONITORING

### 2.2.1 Monitoring Requirements and Equipment

According to the updated EM&A Manual of the Project, impact noise monitoring was conducted weekly at the monitoring location (i.e. NM1) to obtain one set of 30 minutes measurement between 07:00 and 19:00 hours on normal weekdays.

The Action and Limit Levels for construction noise of the Project are provided in *Table 2.4* below.

**Table 2.4 Action and Limit Levels for Construction Noise**

Time Period	Action Level <sup>(a)</sup>	Limit Level <sup>(b)</sup>
07:00 – 19:00 hrs on normal weekdays	When one documented complaint is received from any one of the noise sensitive receivers (NSRs)  or 75 dB(A) recorded at the monitoring station	75 dB(A) at NSRs
<b>Notes:</b>		
(a)	75dB(A) along and at about 100m from the SENTX site boundary was set as the Action Level.	
(b)	Limits specified in the GW-TM and IND-TM for construction and operational noise, respectively.	

Noise monitoring was performed by ALS Technichem (HK) Pty Ltd (HOKLAS Registration No. 066) using a sound level meter placed at the designated monitoring station NM1 (see *Figure 2.1*) in accordance with the requirements stipulated in the updated EM&A Manual. Acoustic calibrator was deployed to check the sound level meter at a known sound pressure level. Details of the deployed equipment are provided in *Table 2.5*.

**Table 2.5 Noise Monitoring Details**

Monitoring Station <sup>(1)</sup>	Location	Parameter	Frequency and Duration	Monitoring Dates	Equipment
NM1	SENTX Site Boundary (North)	L <sub>eq</sub> (30 min) measurement between 07:00 and 19:00 hours on normal weekdays (Monday to Saturday)	Once per week for 30 mins during the construction period of the Project	4, 10, 18, 24 April 2019	Sound Level Meter: B&K 2238 (S/N: 2285722)
				2, 8, 16, 23, 30 May 2019	(S/N: 2285690)
				6, 14, 20, 27 June 2019	Sound Level Meter: B&K 2250 (S/N: 3012330)
					Acoustic Calibrator: Rion NC-74 (S/N: 34246492)
					Acoustic Calibrator: Rion NC-75 (S/N: 34680623)
					Acoustic Calibrator: 3M AC-300 (S/N: AC300005555)

**2.2.2 Monitoring Schedule for the Reporting Period**

The schedule for noise monitoring during the reporting period is provided in *Annex C*.

**2.2.3 Results and Observations**

The noise monitoring results are summarised in *Table 2.6* and graphically presented in *Annex E1*.

**Table 2.6 Summary of Construction Noise Monitoring Results in the Reporting Period**

Month	Monitoring Station	Measured Noise Level L <sub>eq</sub> (30 min), dB(A)		
		Average	Range	Action and Limit Level
April 2019	NM1	52.1	50.4 – 53.8	75
May 2019	NM1	52.8	51.6 – 54.6	75
June 2019	NM1	54.4	53.2 – 55.4	75

Major noise sources identified during the noise monitoring included noise from operations of the existing SENT landfill and the TKO Area 137 Fill Bank, aircrafts and insects.

No exceedance of the Action and Limit Levels for construction noise monitoring was recorded in the reporting period. No further mitigation measure was required in accordance with the Event and Action Plan presented in *Annex E2*.

## 2.3 SURFACE WATER QUALITY MONITORING

### 2.3.1 Monitoring Requirements and Equipment

According to the updated EM&A Manual of the Project, impact surface water quality monitoring were carried out at the three designated surface water discharge points (i.e. DP3, DP4 and DP6) weekly to ensure that the SENTX will not cause adverse water quality impact. Temporary relocation of surface water discharge point DP4 to DP4 (Future, temporary) as an interim arrangement due to site constraints and construction sequence was approved by EPD on 14 May 2019. Impact surface water quality monitoring was carried out at DP4 (Future, temporary) (i.e. DP4T) from the starting from monitoring event on 16 May 2019.

Dissolved Oxygen (DO) and pH value were measured *in situ* whereas the level of suspended solids (SS) were determined by ALS Technichem (HK) Pty Ltd (HOKLAS Registration No. 066).

The Action and Limit Levels of the surface water quality impact monitoring are provided in *Table 2.7*.

**Table 2.7 Action and Limit Levels for Surface Water Quality**

Parameters	Action Level		Limit Level	
	DP3	DP4 & DP6	DP3	DP4 & DP6
DO	< 5.13 mg/L	< 5.80 mg/L	< 4.35 mg/L	< 5.42 mg/L
SS	> 209.3 mg/L	> 11.7 mg/L	> 217.0 mg/L	> 12.7 mg/L
pH	> 8.88	> 8.39	> 9.28	> 8.40

The locations of the monitoring stations for the Project are shown in *Figure 2.1*. All *in situ* monitoring instruments were checked, calibrated and certified by a laboratory accredited under HOKLAS or other international accreditation scheme before use, and subsequently re-calibrated at 3 monthly intervals throughout all stages of the surface water quality monitoring programme. Calibration for a DO meter was carried out before measurement according to the instruction manual of the equipment model. Details of the equipment used in the impact surface water quality monitoring works are provided in *Table 2.8*.



**Table 2.8 Impact Surface Water Quality Monitoring Details**

Monitoring Station	Location	Frequency	Monitoring Dates	Parameter	Equipment
DP3	Surface water discharge point DP3	Weekly	4, 10, 18, 24 April 2019	• pH	YSI Professional
DP4, DP4 (Future, temporary)	Surface water discharge point DP4		2, 8, 16, 23, 30 May 2019	• DO	DSS (S/N: 15H102620/15H103928)
DP6	Surface water discharge point DP6		6, 14, 20, 27 June 2019	• SS	YSI Professional Plus (S/N: HK1923829)
					pH Meter AZ8685 (S/N: 1118396)
<b>Notes:</b>					
(a) DP4 was temporary relocated to DP4 (Future, temporary) (i.e. DP4T) as an interim discharge point from the monitoring event on 16 May 2019.					

### 2.3.2 Monitoring Schedule for the Reporting Period

The schedule for surface water quality monitoring during the reporting period is provided in *Annex C*.

### 2.3.3 Results and Observations

A total of 13 monitoring events for impact surface water quality monitoring were scheduled at all designated monitoring stations during the reporting period. However, sampling could not be carried out in April 2019, on 8 and 16 May 2019 at all monitoring locations and on 20 June and 27 June 2019 at DP6 due to insufficient flow and on 14 June 2019 at DP6 due to backflow. Impact water quality monitoring results and graphical presentations are provided in *Annex F1*.

Exceedances of the Action and Limit Levels were recorded for impact surface water quality monitoring in the reporting period and actions in accordance with the Event and Action Plan presented in *Annex F2* were undertaken. Investigations on the Action and Limit Levels exceedances were conducted and summarised in *Table 2.9* below. Investigation reports of the exceedances are presented in *Annex F3*.

**Table 2.9** *Details of Exceedances of Action and Limit Levels for the Impact Surface Water Quality Monitoring*

Date	Monitoring Location	Parameter	Type of Exceedance	Remarks
8 May 2019	DP6	pH	Limit Level	non Project-related
8 May 2019	DP6	SS	Limit Level	non Project-related
23 May 2019	DP3	pH	Limit Level	non Project-related
23 May 2019	DP3	SS	Limit Level	non Project-related
23 May 2019	DP4 (Future, temporary)	pH	Limit Level	Project-related
23 May 2019	DP4 (Future, temporary)	SS	Limit Level	Project-related
23 May 2019	DP6	pH	Limit Level	non Project-related
23 May 2019	DP6	SS	Limit Level	Project-related
30 May 2019	DP4 (Future, temporary)	pH	Limit Level	non Project-related
30 May 2019	DP4 (Future, temporary)	SS	Limit Level	non Project-related
30 May 2019	DP6	pH	Limit Level	non Project-related
30 May 2019	DP6	SS	Limit Level	non Project-related
6 June 2019	DP4 (Future, temporary)	DO	Limit Level	Non Project-related
6 June 2019	DP4 (Future, temporary)	SS	Limit Level	Non Project-related
6 June 2019	DP6	SS	Limit Level	Non Project-related
14 June 2019	DP4 (Future, temporary)	SS	Limit Level	Non Project-related
20 June 2019	DP4 (Future, temporary)	pH	Limit Level	Non Project-related
20 June 2019	DP4 (Future, temporary)	SS	Limit Level	Non Project-related
27 June 2019	DP4 (Future, temporary)	DO	Limit Level	Non Project-related
27 June 2019	DP4 (Future, temporary)	pH	Limit Level	Non Project-related
27 June 2019	DP4 (Future, temporary)	SS	Limit Level	Non Project-related

Based on the investigation conducted for each of the monitoring event with potential Action and Limit Levels exceedances with the Contractor, the ER and the IEC, there is no evidence showing the exceedances were related to the Project, except the exceedances of pH and SS at DP4 (Future, temporary) and exceedance of SS at DP6 on 23 May 2019 which were found deemed to Project-related activities.

The Contractor was reminded to implement all relevant mitigation measures for the construction works and maintain good site practice. The ET will keep track on the monitoring data and ensure Contractor's compliance of the environmental requirements.

## **2.4** *LANDSCAPE AND VISUAL MONITORING*

### **2.4.1** *Monitoring Requirements*

According to the updated EM&A Manual of the Project, the monthly landscape and visual audit was conducted on 18 April, 23 May and 20 June 2019 to monitor the implementation of the landscape and visual mitigation measures during construction phase.

All relevant environmental mitigation measures listed in the approved EIA Report and the updated EM&A Manual and their implementation status are summarised in *Annex B*.

#### 2.4.2 *Results and Observations*

The Contractor has implemented environmental mitigation measures as stated in the approved EIA Report and the EM&A Manual.

Regarding the landscape and visual audit, the Contractor was reminded to identify the topsoil to be generated from the construction works and plan for the storage and re-use of the topsoil as far as practical. The Contractor has considered the mitigation measures during the design phase, including the preparation of the Construction Drawings and Detailed Landscape Design Drawings. In addition, the Contractor was reminded to complete the advance screen planting works within 9 months of taking possession of the SENT Site (i.e. by September 2019).

#### 2.5 *EM&A SITE INSPECTION*

Site inspections were carried out on a weekly basis with the Contractor, IEC and ER to monitor the implementation of proper environmental pollution control and mitigation measures for air quality, noise, surface water quality and waste management under the Project. In the reporting period, 13 site inspections were carried out on 4, 11, 18 and 24 April, 2, 9, 16, 23 and 30 May and 6, 13, 20 and 27 June 2019.

Key observations during the site inspections are summarized in *Table 2.10*.

**Table 2.10** *Key Observations Identified during the Site Inspections in this Reporting Period*

<b>Inspection Date</b>	<b>Environmental Observations and Recommendations</b>
4 April 2019	<ul style="list-style-type: none"> <li>• The Contractor shall keep the road near the Chun Wo's vehicle exit clear of dusty materials.</li> <li>• The Contractor shall remove the general refuse at DP6 channel to ensure the channel is functioning properly at all times.</li> <li>• The Contractor shall clear the general refuse in the refuse skip near Chun Wo's vehicle entrance regularly to reduce odour and pest impacts.</li> </ul>
11 April 2019	<ul style="list-style-type: none"> <li>• The Contractor shall maintain the wheel washing facilities to avoid discharge of wash-water outside site boundaries.</li> </ul>
18 April 2019	<ul style="list-style-type: none"> <li>• The Contractor shall keep the road near the vehicle exit clear of dusty materials and review the efficiency of the wheel washing facilities.</li> <li>• The Contractor shall maintain the wheel washing facilities to avoid discharge of wash-water outside site boundaries and into surrounding water bodies.</li> <li>• The Contractor shall clean up the oil stain near the site entrance.</li> <li>• The Contractor shall provide a drip tray for the fuel near the site entrance.</li> <li>• The Contractor shall dispose the fuel in the refuse skip as chemical waste in the chemical waste storage cupboard.</li> </ul>

<b>Inspection Date</b>	<b>Environmental Observations and Recommendations</b>
24 April 2019	<ul style="list-style-type: none"> <li>• The Contractor shall maintain the Wetsep near the site entrance to ensure it is functioning at all times.</li> <li>• The Contractor shall clean up the oil spillage near the sediment trap.</li> <li>• The Contractor shall clear the general refuse near the site entrance and sediment trap. An enclosed bin shall be provided near the sediment trap for storage of general refuse.</li> <li>• The Contractor shall avoid accumulation of stagnant water in the refuse skips near the site entrance.</li> </ul>
2 May 2019	<ul style="list-style-type: none"> <li>• The Contractor shall fix the water leakage issue of the Wetsep near DP6 to ensure it is functioning at all times.</li> <li>• The Contractor shall clean up the oil spillage near the sediment trap.</li> <li>• The Contractor shall provide drip tray for chemical container and remove the water from the drip tray.</li> <li>• The Contractor shall review the drainage system and avoid water discharge outside the site boundary.</li> <li>• The Contractor shall clear the general refuse near the refuse skip and sediment trap.</li> </ul>
9 May 2019	<ul style="list-style-type: none"> <li>• The Contractor shall remove the soil near the fencing at Chun Wo's vehicle entrance to reduce SS runoff.</li> <li>• The Contractor shall remove the wash-water and silt at the wheel washing facilities more frequently to avoid overflow.</li> <li>• The Contractor shall clear the general refuse at the site entrance and near future EPD Building to reduce odour and pest impacts.</li> <li>• The Contractor shall review the drainage system near DP6 to avoid accumulation of stagnant water and ensure the silt removal facility is functioning at all times.</li> </ul>
16 May 2019	<ul style="list-style-type: none"> <li>• The Contractor shall maintain the temporary drain near DP4T to avoid accumulation of stagnant water and ensure the drainage system is functioning properly.</li> <li>• The Contractor shall remove the silt around the pump at the site entrance to ensure the silt removal facilities are functioning properly.</li> <li>• The Contractor shall provide drip tray for the chemical placed near the sediment trap.</li> <li>• The Contractor shall maintain the site drainage to avoid accumulation of stagnant water near sediment trap.</li> <li>• The Contractor shall maintain the Wetsep near DP6 to ensure it is functioning at all times.</li> <li>• The Contractor shall display a NRMM label to the hydraulic truck crane near the LTP and ensure the crane is not in use without the NRMM label.</li> </ul>
23 May 2019	<ul style="list-style-type: none"> <li>• The Contractor shall remove the silt at the wheel washing facilities more frequently to ensure the facilities are functioning properly.</li> <li>• The Contractor shall remove the silt around the pump at the site entrance more frequently to ensure the silt removal facilities are functioning properly.</li> <li>• The Contractor shall provide drip tray for the chemical placed near the sediment trap and LTP.</li> </ul>
30 May 2019	<ul style="list-style-type: none"> <li>• The Contractor shall remove the silt at the wheel washing facilities and near the facilities more frequently to ensure the facilities are functioning properly.</li> <li>• The Contractor shall provide drip trays for chemicals placed near DP6 and at the sediment trap.</li> <li>• The Contractor shall replace the NRMM label on the generator near LTP.</li> <li>• The Contractor shall dispose of the chemical waste and fuel inside the refuse skip at the sediment trap as chemical waste inside the chemical waste cabinet.</li> </ul>

Inspection Date	Environmental Observations and Recommendations
6 June 2019	<ul style="list-style-type: none"> <li>The Contractor shall remove the soil near DP4T channel and maintain the berm along DP4T channel to minimize SS runoff to the channel.</li> <li>The Contractor shall keep the general refuse in an enclosed bin near DP6.</li> <li>The Contractor shall avoid accumulation of stagnant water in the refuse skips near sediment trap and future EPD building.</li> <li>The Contractor shall maintain and review the design of DP6 channel to ensure all water is treated before discharge at DP6.</li> </ul>
13 June 2019	<ul style="list-style-type: none"> <li>The Contractor shall maintain the berm along DP4T channel to avoid direct SS runoff to the channel.</li> <li>The Contractor shall change the wash-water at the wheel washing facility more frequently to ensure the facility is functioning at all times.</li> <li>The Contractor shall avoid accumulation of stagnant water in the refuse skip near the Chun Wo's vehicle entrance.</li> </ul>
20 June 2019	<ul style="list-style-type: none"> <li>The Contractor shall remove the deposited silt and grit at the temporary drain along the western perimeter bund to ensure it is functioning at all times.</li> <li>The Contractor shall remove the general refuse accumulated in the refuse bin near the site entrance more frequently and clear the general refuse near the site entrance and sediment trap.</li> <li>The Contractor shall maintain the drainage at DP4T to avoid direct discharge of site water from the pit at Cell 2 to the DP4T channel.</li> </ul>
27 June 2019	<ul style="list-style-type: none"> <li>The Contractor shall remove the deposited silt and grit and repair the bund at the temporary drain along the western perimeter bund and near future EPD building to ensure it is functioning at all times.</li> <li>The Contractor shall maintain the drainage, silt fencing and geo-textile on the pipe at DP6 to avoid discharge of site water into surrounding water body.</li> </ul>

The Contractor has rectified all of the observations identified during environmental site inspections in the reporting period. Some environmental deficiencies were also identified during the reporting period and additional control measures have been proposed by the Contractor to rectify the corresponding deficiencies. The details are presented in *Table 2.11*.

**Table 2.11** *Summary of Environmental Deficiencies Identified and Corresponding Additional Control Measures Proposed by the Contractor*

Deficiencies	Rectifications Implemented	Proposed Additional Control Measures
<b>Surface Water</b>		
Intercepting channels & drainage system	<ul style="list-style-type: none"> <li>Reviewed drainage plan.</li> </ul>	<ul style="list-style-type: none"> <li>Provision of additional drainage channels.</li> <li>Expedite the construction of permanent sediment trap and discharge culverts.</li> </ul>

Deficiencies	Rectifications Implemented	Proposed Additional Control Measures
DP channels (design & regular silt removal)	<ul style="list-style-type: none"> <li>Carried out regular maintenance and cleaning of channels.</li> <li>DP4 channel: Area near the channel was paved with concrete and a bund was built.</li> <li>DP6 channel: Gravel piles on the channel were covered with concrete which serve as blocks for running water and to divide the channel into several sections. A pump was placed in the water zone in the upstream section to pump water to the Wetsep for treatment prior to the discharge to the last section before the weir plate.</li> <li>DP6: Pipes through the gravel piles between different channel sections were covered with geotextiles to block debris and silt.</li> </ul>	N.A.
Stockpiles & exposed soil	<ul style="list-style-type: none"> <li>Installed silt fencing near surface water channel along DP6 channel.</li> </ul>	<ul style="list-style-type: none"> <li>Improve soil covering.</li> <li>Compaction and cover for stockpiles and soil slopes.</li> </ul>
Wetsep (treatment capacity & number)	<ul style="list-style-type: none"> <li>Reviewed Wetsep capacity.</li> <li>Chemicals dosage of the Wetsep was increased to enhance the efficiency.</li> </ul>	<ul style="list-style-type: none"> <li>Install additional Wetsep.</li> </ul>
Backflow / ponding during heavy rainfall	<ul style="list-style-type: none"> <li>Raised with EPD (LDG) and CEDD.</li> </ul>	N.A.

## 2.6

### WASTE MANAGEMENT STATUS

The Contractor has registered as a chemical waste producer under the Contract.

Sufficient numbers of receptacles were available for general refuse collection and sorting.

As informed by the Contractor, waste generated during this reporting period include mainly inert C&D materials. Reference has been made to the waste flow table prepared by the Contractor. The quantities of different types of wastes and imported fill materials are summarised in *Table 2.12*.



**Table 2.12 Quantities of Different Waste Disposed and Imported Fill Materials**

Month/ Year	Inert C&D Materials (a) (in '000m <sup>3</sup> )	Imported Fill (in '000kg)		Inert Construction Waste Re- used (in '000m <sup>3</sup> )	Non-inert Construction Waste (b) (in '000m <sup>3</sup> )	Recyclable Materials (c) (in '000kg)	Chemical Wastes (in '000kg)
		Rock	Soil				
April 2019	0.251	0	2194.24	0	0.023	0	0
May 2019	0.015	0	3897.15	0	0.019	0	0
June 2019	0.034	0	689.72	0	0.020	0	0

**Notes:**

- (a) Inert construction wastes include hard rock and large broken concrete, and materials disposed as public fill. Density assumption: 1.6 (t/m<sup>3</sup>) for public fill
- (b) Non-inert construction wastes include general refuse disposed at landfill. Density assumption: 0.9 (t/m<sup>3</sup>) for general refuse.
- (c) Recyclable materials include metals, paper, cardboard, plastics and others.

**2.7 IMPLEMENTATION STATUS OF ENVIRONMENTAL MITIGATION MEASURES**

A summary of the Environmental Mitigation Implementation Schedule is presented in *Annex B*. The necessary mitigation measures were implemented properly for the Project.

**2.8 SUMMARY OF EXCEEDANCES OF THE ENVIRONMENTAL QUALITY PERFORMANCE LIMIT**

The 24-hour TSP monitoring results and construction noise monitoring results complied with the Action and Limit Levels in the reporting period. 2 exceedances of the Limit Level for DO, 8 exceedances of the Limit Level for pH and 11 exceedances of the Limit Level of SS were recorded for surface water quality impact monitoring in the reporting period. The exceedances were investigated and considered not Project-related, except the exceedances of Limit Levels for pH and SS at DP4 (Future, temporary) and Exceedance of Limit Level of SS at DP6 on 23 May 2019 which were found deemed to cause by Project-related activities.

Cumulative statistics on exceedances is provided in *Annex G*.

**2.9 SUMMARY OF COMPLAINTS, NOTIFICATION OF SUMMONS AND SUCCESSFUL PROSECUTIONS**

There were no complaints, notification of summons or prosecution recorded in the reporting period.

Statistics on complaints, notifications of summons and successful prosecutions are summarised in *Annex G*.

This Quarterly EM&A Report presents the findings of the EM&A activities undertaken during the period from 1 April to 30 June 2019 in accordance with the updated EM&A Manual and the requirements of the Environmental Permit (EP-308/2008/B).

Air quality (24-hour TSP), noise and water quality (DO, pH and SS) monitoring were carried out in the reporting period. Results for air quality monitoring (24-hour TSP) complied with the Action and Limit Levels in the reporting period. No Action and Limit Levels exceedances were recorded for construction noise monitoring. 2 exceedances of the Limit Level for DO, 8 exceedances of the Limit Level for pH and 11 exceedances of the Limit Level of SS were recorded for surface water quality impact monitoring in the reporting period. The exceedances were investigated and considered not Project-related, except the exceedances of Limit Levels for pH and SS at DP4 (Future, temporary) and Exceedance of Limit Level of SS at DP6 on 23 May 2019 which were found deemed to cause by Project-related activities.

Thirteen environmental site inspections were carried out during the reporting period. Environmental deficiencies were identified during the site inspection and the Contractor has proposed additional control measures to rectify the deficiencies.

There were no complaints, notification of summons or prosecution recorded in the reporting period.

It is noted that most environmental pollution control and mitigation measures were properly implemented and the construction activities of the Project did not introduce any adverse impact to the sensitive receivers in the reporting period. Yet, some environmental deficiencies were identified during the reporting period and additional control measures have been proposed by the Contractor to rectify the corresponding deficiencies. The monitoring programme has been reviewed and was considered as adequate to cater for the nature of works in progress. Change to the monitoring programme was thus not recommended at this stage. The monitoring programme will be evaluated as appropriate in the next reporting period. The ET will keep track on the construction works to confirm compliance of environmental requirements and the proper implementation of all necessary mitigation measures.

Annex A

## Work Programme



WBS Path	Activity	Activity Name	Start	Finish	Phase	Predecessor Details	Successor Details	2018		2019		2020		2021		2022		2023	
								Q2	Q3	Q4	Q1	Q2	Q3	Q4	Q1	Q2	Q3	Q4	Q1
336	337	338	339	340	341	342	343	344	345	346	347	348	349	350	351	352	353	354	355
356	357	358	359	360	361	362	363	364	365	366	367	368	369	370	371	372	373	374	375
376	377	378	379	380	381	382	383	384	385	386	387	388	389	390	391	392	393	394	395
396	397	398	399	400	401	402	403	404	405	406	407	408	409	410	411	412	413	414	415
416	417	418	419	420	421	422	423	424	425	426	427	428	429	430	431	432	433	434	435
436	437	438	439	440	441	442	443	444	445	446	447	448	449	450	451	452	453	454	455
456	457	458	459	460	461	462	463	464	465	466	467	468	469	470	471	472	473	474	475
476	477	478	479	480	481	482	483	484	485	486	487	488	489	490	491	492	493	494	495
496	497	498	499	500	501	502	503	504	505	506	507	508	509	510	511	512	513	514	515
516	517	518	519	520	521	522	523	524	525	526	527	528	529	530	531	532	533	534	535
536	537	538	539	540	541	542	543	544	545	546	547	548	549	550	551	552	553	554	555
556	557	558	559	560	561	562	563	564	565	566	567	568	569	570	571	572	573	574	575
576	577	578	579	580	581	582	583	584	585	586	587	588	589	590	591	592	593	594	595
596	597	598	599	600	601	602	603	604	605	606	607	608	609	610	611	612	613	614	615

█ Remaining Work  
█ Critical Remaining Work  
█ Milestone



Date	Revision	Checked	Approved
11-May-18	SENTX-GVL-WP-PB-ZZ-0001 Rev.01		
20-Jul-18	SENTX-GVL-WP-PB-ZZ-0001 Rev.02 (Detailed)		



WBS Path	ID	Activity Name	Dur	Start	Finish	Task	Predecessor Details	Successor Details	2018			2019			2020			2021			2022			2023				
									Q1	Q2	Q3	Q4	Q1	Q2	Q3	Q4	Q1	Q2	Q3	Q4	Q1	Q2	Q3	Q4	Q1	Q2	Q3	Q4
<b>SA2.03 Civil Engineering Works</b>																												
<b>SA2.03.1 Landfill Cell 2</b>																												
509	6.03.2	63-1000 Earth bund (Eastern)	120	02-Nov-19	13-Apr-20	810																						
510	6.03.2	63-1100 Earth bund (Western)	110	02-Nov-19	23-Jan-21	810																						
511	6.03.2	63-1200 Interfill bund (Cell 2)	90	09-Jun-20	06-Sep-20	734	11-1100 FS, 23-2500 FS, 53-1800 FS, 53-1400 FS, 53-2800 FS	53-3000 FS, 63-1500 FS, 63-1800 FS, 63-1900 FS, 63-2000 FS, 63-2100 FS, 63-2200 FS, M12, 1 FS, S0, M2, 2 FS, 63-1100 FS																				
512	6.03.2	63-1300 Site Formation	75	02-Nov-19	15-Jan-20	14	11-1100 FS, 23-2500 FS, 53-1800 FS, 53-1400 FS	63-1400 FS, 63-4200 FS																				
513	6.03.2	63-1400 Pump Station (PS42X)	45	09-Jun-20	23-Jul-20	84	63-1500 FS, 63-1100 FS	63-1600 FS, 63-1700 FS																				
514	6.03.2	63-1500 Living Works	90	01-Oct-21	29-Dec-21	710	41-1500 FS, 63-1000 FS, 63-1100 FS, 63-1200 FS	63-1800 FS, M12, 3 FS, 63-2400 FS																				
515	6.03.2	63-1600 Protective Stone Laying & Leachate Collection Pipe	25	30-Dec-20	23-Jan-21	810	63-1500 FS, 41-1500 FS, 63-1400 FS	32-1800 FS, M12, 3 FS																				
516	6.03.2	63-1700 Install Leachate Force Main	75	24-Jul-20	06-Oct-20	84	63-1100 FS, 41-1500 FS, 63-1400 FS	54-2800 FS, M12, 3 FS																				
517	6.03.2	63-1800 Install Landfill Gas Pipe on earth bund	35	20-Feb-20	26-Mar-20	188	41-1500 FS, 63-1000 FS	54-4000 FS, M12, 3 FS																				
<b>SA2.03.3 Landfill Cell 3</b>																												
518	6.03.3	63-1900 Earth bund (Eastern)	110	20-Feb-20	08-Jun-20	9	11-1100 FS, 53-4200 FS, 63-1000 FS, 63-4000 FS, 53-2800 FS, 63-4200 FS	53-3000 FS, 53-3600 FS, 63-2400 FS, 63-2700 FS, M12, 1 FS, S0, M12, 2 FS, 63-2000 FS, 45, 63-2200 FS																				
519	6.03.3	63-2000 Earth bund (Western)	110	25-Apr-20	12-Aug-20	19	11-1100 FS, 63-1000 FS, 63-1900 FS, 45	63-2300 FS, 63-2400 FS, 63-2600 FS, 63-3700 FS, 63-1100 FS, 45																				
520	6.03.3	63-2100 Interfill bund (Cell 3)	105	29-Jun-20	11-Oct-20	789	11-1100 FS, 63-1000 FS, 63-4200 FS, 63-2000 FS, 45	63-2400 FS																				
521	6.03.3	63-2200 Site Formation	75	09-Jun-20	23-Aug-20	9	11-1100 FS, 63-1000 FS, 63-1900 FS	63-3300 FS																				
522	6.03.3	63-2300 Pump Station (PS43X)	45	23-Aug-20	16-Oct-20	9	63-2200 FS, 63-2000 FS	63-2500 FS, 63-2600 FS																				
523	6.03.3	63-2400 Living Works	100	01-Oct-21	08-Jan-22	435	41-1500 FS, 63-1900 FS, 63-2000 FS, 63-2100 FS, 63-1500 FS	63-2500 FS, M12, 3 FS																				
524	6.03.3	63-2500 Protective Stone Laying & Leachate Collection Pipe	25	09-Jan-21	03-Feb-21	435	63-2400 FS, 41-1500 FS, 63-2300 FS	32-1700 FS, M12, 3 FS																				
525	6.03.3	63-2600 Install Leachate Force Main	75	07-Oct-20	20-Dec-20	9	63-2000 FS, 41-1500 FS, 63-2300 FS	53-2100 FS, 40, 54-2800 FS, M12, 3 FS																				
526	6.03.3	63-2700 Install Landfill Gas Pipe on earth bund	35	09-Jun-20	13-Jul-20	58	41-1500 FS, 63-1900 FS	54-4000 FS, M12, 3 FS																				
<b>SA2.03.4 Landfill Cell 4</b>																												
527	6.03.4	63-2800 Remaining Portion of Buttress Wall	120	07-Sep-21	04-Jan-22	494	62-1000 FS																					
528	6.03.4	63-2900 Earth bund (Western) incl. MSE Wall	120	07-Sep-21	04-Jan-22	239	62-1000 FS	63-3000 FS, 63-3100 FS, 63-3200 FS, 63-3400 FS, 63-3800 FS, 63-3900 FS, 63-4100 FS, S0, M, 6 FS, 60, M, 9 FS, S0, M, 9 FS																				
529	6.03.4	63-3000 Site Formation	120	05-Jan-22	04-May-22	239	62-1000 FS, 62-1100 FS, 62-1200 FS, 63-2900 FS	63-3100 FS																				
530	6.03.4	63-3100 Pump Station (PS44X)	45	05-May-22	18-Jun-22	239	63-3000 FS, 63-2900 FS	63-3300 FS, 63-3400 FS																				
531	6.03.4	63-3200 Living Works	135	01-Oct-22	12-Feb-23	0	41-1500 FS, 63-2900 FS	63-3300 FS, M12, 3 FS																				
532	6.03.4	63-3300 Protective Stone Laying & Leachate Collection Pipe	60	13-Feb-23	13-Apr-23	0	41-1500 FS, 63-3200 FS, 63-3100 FS	12-1900 FS, 32-1800 FS, M12, 6 FS																				
533	6.03.4	63-3400 Install Leachate Force Main & Remove Temporary Leachate Pipe	30	19-Jun-22	18-Jul-22	269	41-1500 FS, 63-2900 FS, 63-3100 FS	12-1900 FS, 32-1800 FS, M12, 6 FS																				
<b>SA2.03.5 Drainage - Surface Run-Off</b>																												
534	6.03.5	63-3500 Perimeter Channel (X5A) at Cell 2 Western Bund	15	09-Jan-20	23-Jun-20	1054	63-1100 FS	12-1900 FS																				
535	6.03.5	63-3600 Perimeter Channel (X15A) at Cell 2 Western Bund	30	09-Jun-20	08-Jul-20	1029	63-1100 FS	63-4000 FS																				
536	6.03.5	63-3700 Perimeter Channel (X15A) at Cell 3 Western Bund	30	13-Aug-20	11-Sep-20	964	63-2000 FS	63-4000 FS																				
537	6.03.5	63-3800 Perimeter Channel (X15A) at Cell 4 Western Bund	20	05-Jan-22	24-Jan-22	464	63-2900 FS	63-4000 FS																				
538	6.03.5	63-3900 Perimeter Channel (X10C) at Cell 4 Western Bund	15	05-Jan-22	19-Jan-22	469	63-2900 FS	63-4000 FS																				
539	6.03.5	63-4000 Connection to Existing DP3	10	25-Jan-22	03-Feb-22	464	63-3900 FS, 63-3000 FS, 63-3700 FS, 63-3800 FS	12-1900 FS																				
540	6.03.5	63-4100 Remove Cut-Off Channel C-7 at bottom of Buttress Wall	30	09-Jun-21	08-Jul-21	419	63-2900 SS, 40	63-3000 FS																				
541	6.03.5	63-4200 Temporary Channel (XT) at SENT Infrastructure Area	30	16-Jan-20	14-Feb-20	14	63-1300 FS	63-1900 FS, 63-2100 FS																				
<b>SA2.03.6 Drainage - Ground Water</b>																												
542	6.03.6	63-4300 Construct Temporary Channel (TC-1), from M1-1 to Existing LC-625	85	07-Sep-21	30-Nov-21	529	23-1900 FS, 11-1300 FS, 62-1000 FS	63-4400 FS																				
543	6.03.6	63-4400 Divert OCV at M1-1 to TC-1	5	27-Oct-21	31-Oct-21	529	63-4300 FS	63-4500 FS, M, 9 FS																				
544	6.03.6	63-4500 Reconstruct of GWCIP across Cell 4	30	01-Nov-21	30-Nov-21	529	62-1100 FS, 62-1200 FS, 63-4400 FS	12-1900 FS																				
<b>SA2.03.8 Utilities - Works Associated with Utilities Undertakers</b>																												
545	6.03.8.1.U1	63-4600 LFG Generator Ongrid Testing	180	30-Dec-20	27-Jan-21	655		63-4700 FS																				
546	6.03.8.1.U2	63-4700 LFG Generator Ongrid Inspection & Verify	30	28-Jun-21	27-Jul-21	655	63-4600 FS	12-1900 FS																				
<b>SA2.03.10 Town Gas</b>																												
547	6.03.10.U1	63-4800 Laying Gas Mains (from LFG to Town Gas PP)	45	15-Nov-20	29-Dec-20	855	54-4000 FF	63-4900 FS																				
548	6.03.10.U2	63-4900 Gas Meter Relocation & Connection at LFG	10	30-Dec-20	08-Jan-21	855	63-4800 FS, 54-4000 FS	12-1900 FS																				
<b>SA2.04 Building &amp; E&amp;M Works</b>																												
<b>SA2.04.C Part X1 Area C</b>																												
549	6.04.C.02	64-1000 CR1500 Stover 01 C Relocation	15	08-Jul-21	02-Aug-21	660	32-1500 FS	12-1900 FS																				
550	6.04.C.02	64-1100 Absorption Chiller (Optional)	90	01-Oct-19	29-Dec-19	1231	54-2200 FS	12-1900 FS																				
<b>SA2.08 Landscape Works</b>																												
<b>SA2.08.1 SENT Area - Tree Removal &amp; Transplanting</b>																												
551	6.08.1	68-1000 Access tree condition and select for transplanting	30	01-Apr-19	30-Apr-19	1264	14-1300 FS	68-1100 FS, 68-1200 FS, 68-1400 FS																				
552	6.08.1	68-1100 Prepare new site to receive trees	90	01-May-19	29-Jul-19	1264	68-1000 FS	68-1200 FS																				
553	6.08.1	68-1200 Transplant selected trees	120	01-May-19	28-Aug-19	1264	68-1000 FS, 68-1100 FS	68-1300 FS																				
554	6.08.1	68-1300 Prune trees prior to removal from Cell 4	90	29-Aug-19	26-Nov-19	1264	68-1200 FS	12-1900 FS																				
555	6.08.1	68-1400 Tree Felling - Part X3	90	01-May-19	29-Jul-19	1364	23-8000 FS, 31-1900 FS, 68-1000 FS	12-1900 FS																				
<b>SA2.08.2 SENTX Area - Tree Nursery &amp; Tree Planting</b>																												
556	6.08.2	68-1500 Tree Nursery	300	01-May-19	24-Feb-20	1174	14-1800 FS, 58-1000 FS, S0	12-1900 FS, M, 3, 2 FS																				
557	6.08.2	68-1700 Landscaping in New Infrastructure Area	150	07-Jul-20	03-Dec-20	891	54-1000 FS, 23-7600 FS	12-1900 FS																				

Annex B

# Environmental Mitigation Implementation Schedule

## Annex B Environmental Mitigation Implementation Schedule

EIA Ref.	EM&A Ref	Environmental Protection Measures/ Mitigation Measures	Objectives of the Recommended Measure & Main Concerns to address	Location of the Measures	Who to implement the measure?	When to implement the measure? <sup>(1)</sup>				What requirements or standards for the measure to achieve?	Implementation Status and Remarks	
						D	C	O/R	A			
<i>Air Quality - Construction Phase</i>												
4.8.1	AQ1	<u>Blasting</u> <ul style="list-style-type: none"> <li>The area within 30m of the blasting area will be wetted prior to blasting.</li> <li>Blasting will not be carried out when the strong wind signal or tropical cyclone warning signal No. 3 or higher is hoisted, unless this is with the express prior permission of the Commissioner of Mines.</li> <li>loose material and stones in the Site will be removed prior to the blast operation</li> <li>During blasting, blast nets, screens and other protective covers will be used to prevent the projection of flying fragments and material resulting from blasting</li> </ul>	To minimise potential dust nuisance	Blasting area and 30m of blasting area	SENTX Contractor					✓	<i>Air Pollution Control (Construction Dust) Regulations</i>	Not applicable. Blasting is not required in the latest landfill design
4.8.1	AQ2	<u>Rock Drilling</u> <ul style="list-style-type: none"> <li>Watering will be carried out at the rock drilling activities to avoid fugitive dust emissions.</li> </ul>	To minimise potential dust nuisance	Rock drilling area	SENTX Contractor					✓	<i>Air Pollution Control (Construction Dust) Regulations</i>	Not applicable. Rock drilling is not required in the latest landfill design

(1) D=Design; C=Construction; O/R=Operation/Restoration; A=Aftercare



EIA Ref.	EM&A Ref	Environmental Protection Measures/ Mitigation Measures	Objectives of the Recommended Measure & Main Concerns to address	Location of the Measures	Who to implement the measure?	When to implement the measure? <sup>(1)</sup>				What requirements or standards for the measure to achieve?	Implementation Status and Remarks
						D	C	O/R	A		
4.8.1	AQ3	<u>Site Access Road</u> <ul style="list-style-type: none"> <li>The main haul road will be kept clear of dusty materials or sprayed with water.</li> <li>The main haul road will be paved with aggregate or gravel.</li> <li>Vehicle speed will be limited to 10kph.</li> </ul>	To minimise potential dust nuisance	Main haul road	SENTX Contractor				✓	<i>Air Pollution Control (Construction Dust) Regulations</i>  <i>HKAQO and EIAO-TM Annex 4</i>	Reminder was given to Contractor
4.8.1	AQ4	<u>Stockpiling of Dusty Materials</u> <ul style="list-style-type: none"> <li>Any stockpile of dusty materials will be covered entirely by impervious sheeting or placed in an area sheltered on the top and three sides or sprayed with water so as to ensure that the entire surface is wet.</li> </ul>	To minimise potential dust nuisance	All construction works area	SENTX Contractor				✓	<i>Air Pollution Control (Construction Dust) Regulations</i>  <i>HKAQO and EIAO-TM Annex 4</i>	Implemented
4.8.1	AQ5	<u>Loading, unloading or transfer of dusty materials</u> <ul style="list-style-type: none"> <li>All dusty materials will be sprayed with water immediately prior to any loading, unloading or transfer operation so as to maintain the dusty material wet.</li> </ul>	To minimise potential dust nuisance	All construction works area	SENTX Contractor				✓	<i>Air Pollution Control (Construction Dust) Regulations</i>  <i>HKAQO and EIAO-TM Annex 4</i>	Implemented
4.8.1	AQ6	<u>Site Boundary and Entrance</u> <ul style="list-style-type: none"> <li>Where a site boundary adjoins a road, street, service lane or other area accessible to the public, hoarding of height not less than 2.4m from</li> </ul>	To minimise potential dust nuisance	Site boundary and entrance	SENTX Contractor				✓	<i>Air Pollution Control (Construction Dust) Regulations</i>  <i>HKAQO and EIAO-</i>	Not applicable

EIA Ref.	EM&A Ref	Environmental Protection Measures/ Mitigation Measures	Objectives of the Recommended Measure & Main Concerns to address	Location of the Measures	Who to implement the measure?	When to implement the measure? <sup>(1)</sup>				What requirements or standards for the measure to achieve?	Implementation Status and Remarks
						D	C	O/R	A		
		ground level will be provided along the entire length of that portion of the site boundary except for the site entrance or exit.									<i>TM Annex 4</i>
4.8.1	AQ7	<u>Excavation Works</u> <ul style="list-style-type: none"> <li>Working area of any excavation or earth moving operation will be sprayed with water immediately before, during and immediately after the operation so as to ensure that the entire surface is wet.</li> </ul>	To minimise potential dust nuisance	All construction works area	SENTX Contractor				✓	<i>Air Pollution Control (Construction Dust) Regulations</i>  <i>HKAQO and EIAO-TM Annex 4</i>	Implemented
4.8.1	AQ8	<u>Building Demolition</u> <ul style="list-style-type: none"> <li>The area where the demolition works are planned to take place will be sprayed with water immediately prior to, during and immediately after the demolition activities.</li> <li>Any dusty materials remaining after a stockpile is removed will be wetted with water and cleared from the surface of roads or street.</li> </ul>	To minimise potential dust nuisance	All construction works area	SENTX Contractor				✓	<i>Air Pollution Control (Construction Dust) Regulations</i>  <i>HKAQO and EIAO-TM Annex 4</i>	Not applicable
4.8.1	AQ9	<u>Construction of the Superstructure of Building</u> <ul style="list-style-type: none"> <li>Effective dust screens, sheeting or netting will be provided to enclose the scaffolding from the ground level up to the highest level of the scaffolding.</li> </ul>	To minimise potential dust nuisance	All construction works area	SENTX Contractor				✓	<i>Air Pollution Control (Construction Dust) Regulations</i>  <i>HKAQO and EIAO-TM Annex 4</i>	Not applicable

EIA Ref.	EM&A Ref	Environmental Protection Measures/ Mitigation Measures	Objectives of the Recommended Measure & Main Concerns to address	Location of the Measures	Who to implement the measure?	When to implement the measure? <sup>(1)</sup>				What requirements or standards for the measure to achieve?	Implementation Status and Remarks
						D	C	O/R	A		
4.8.1	AQ10	Should a stone crushing plant be needed on site, the control measures recommended in the <i>Best Practicable Means Requirement for Mineral Works (Stone Crushing Plants) BPM 11/1</i> should be implemented.	To minimise potential dust nuisance	Stone crushing plant/ construction phase	SENTX Contractor	✓				<i>Best Practicable Means Requirement for Mineral Works (Stone Crushing Plants) BPM 11/1</i>	Not applicable. Stone crushing plant is not required in the latest landfill design
4.8.1	AQ11	Good site practices such as regular maintenance and checking of the diesel powered mechanical equipment will be adopted to avoid any black smoke emissions and to minimize gaseous emissions.	To minimise potential dust nuisance	All construction works area	SENTX Contractor	✓				<i>HKAQO and EIAO-TM Annex 4</i>	Implemented
4.10.1	AQ12	Dust monitoring once every 6 days	Ensure the dust generated from the project meets the air quality requirement	At monitoring locations shown in <i>Figure 3.2a</i>	SENTX Contractor	✓				<i>HKAQO and EIAO-TM Annex 4</i>	Implemented
4.10.2	AQ41	Monitoring of ambient TSP once every 6 days	Ensure the dust emission from the project meets the dust requirement	At monitoring locations shown in <i>Figure 11.3a</i>	SENTX Contractor	✓	✓			<i>HKAQO and EIAO-TM Annex 4</i>	Implemented
4.10.2	AQ46	Monitoring of meteorological station, continuously	Collect site specific meteorological data	At meteorological station shown in <i>Figure 11.3a</i>	SENTX Contractor	✓	✓	✓	-		Implemented

**Noise – Construction Phase**

EIA Ref.	EM&A Ref	Environmental Protection Measures/ Mitigation Measures	Objectives of the Recommended Measure & Main Concerns to address	Location of the Measures	Who to implement the measure?	When to implement the measure? <sup>(1)</sup>				What requirements or standards for the measure to achieve?	Implementation Status and Remarks
						D	C	O/R	A		
5.7.1	N1	<p>Adopt good site practice listed below:</p> <ul style="list-style-type: none"> <li>• Only well-maintained plant will be operated on-site and plant should be serviced regularly during the construction program;</li> <li>• Silencers or mufflers on construction equipment should be utilized and will be properly maintained during the construction program;</li> <li>• Mobile plant, if any, will be sited as far from NSRs as possible;</li> <li>• Machines and plant (such as trucks) that may be in intermittent use will be shut down between work periods or should be throttled down to a minimum;</li> <li>• Plant known to emit noise strongly in one direction will, wherever possible, be orientated so that the noise is directed away from the nearby NSRs; and</li> <li>• Material stockpiles and other structures will be effectively utilised, wherever practicable, in screening noise from on-site construction activities.</li> </ul>	To minimise potential construction noise nuisance.	All construction works area	SENTX Contractor				✓	<i>Noise Control Ordinance (NCO) and EIAO-TM Annex 5</i>	Implemented

EIA Ref.	EM&A Ref	Environmental Protection Measures/ Mitigation Measures	Objectives of the Recommended Measure & Main Concerns to address	Location of the Measures	Who to implement the measure?	When to implement the measure? <sup>(1)</sup>				What requirements or standards for the measure to achieve?	Implementation Status and Remarks
						D	C	O/R	A		
5.8	N2	Weekly noise monitoring	Ensure noise generated from the project meets the criteria	At monitoring locations shown in Figure 6.4a	SENTX Contractor		✓			Noise Control Ordinance (NCO) and EIAO-TM Annex 5	Implemented
<b>Water Quality – Construction Phase</b>											
6.8.1	WQ1	<u>Construction Runoff</u> <ul style="list-style-type: none"> <li>Exposed soil areas will be minimised to reduce the contamination of runoff and erosion.</li> </ul>	To minimise potential water quality impacts arising from the construction works	All construction works area	SENTX Contractor		✓			ProPECC PN 1/94 EIAO-TM Annex 6	Deficiency of mitigation measures but rectified by the Contractor
6.8.1	WQ2	<ul style="list-style-type: none"> <li>Perimeter channels will be constructed in advance of site formation works and earthworks and intercepting channels will be provided for example along the edge of excavation.</li> </ul>	To minimise potential water quality impacts arising from the construction works	All construction works area	SENTX Contractor		✓	✓		ProPECC PN 1/94 Water Pollution Control Ordinance (WPCO) EIAO-TM Annex 6	Deficiency of mitigation measures but rectified by the Contractor
6.8.1	WQ3	<ul style="list-style-type: none"> <li>Silt removal facilities, channels and manholes will be maintained and the deposited silt and grit should be removed regularly to ensure they are functioning properly at all times.</li> </ul>	To minimise potential water quality impacts arising from the construction works	All construction works area	SENTX Contractor		✓			ProPECC PN 1/94 WPCO EIAO-TM Annex 6	Deficiency of mitigation measures but rectified by the Contractor
6.8.1	WQ4	<ul style="list-style-type: none"> <li>Temporary covers such as tarpaulin will also be provided to minimise the generation of high SS runoff.</li> </ul>	To minimise potential water quality impacts arising from the construction works	All construction works area	SENTX Contractor		✓			ProPECC PN 1/94 WPCO	Implemented
6.8.1	WQ5	<ul style="list-style-type: none"> <li>The surface runoff contained any oil</li> </ul>	To minimise potential	All	SENTX		✓			ProPECC PN 1/94	Not applicable

EIA Ref.	EM&A Ref	Environmental Protection Measures/ Mitigation Measures	Objectives of the Recommended Measure & Main Concerns to address	Location of the Measures	Who to implement the measure?	When to implement the measure? <sup>(1)</sup>				What requirements or standards for the measure to achieve?	Implementation Status and Remarks
						D	C	O/R	A		
		and grease will pass through the oil interceptors.	water quality impacts arising from the construction works	construction works area	Contractor					WPCO EIAO-TM Annex 6	
6.8.1	WQ6	<ul style="list-style-type: none"> <li>All sewer and drains will be sealed to prevent building debris, soil etc from entering public sewers/drains before commencing any demolition works</li> </ul>	To minimise potential water quality impacts arising from the demolition works	Infrastructure area at existing SENT Landfill	SENTX Contractor		✓			ProPECC PN 1/94 WPCO EIAO-TM Annex 6	Not applicable
6.8.1	WQ7	<ul style="list-style-type: none"> <li>During the excavation works for the twin drainage tunnels, the recycle water for cooling the cutter head of the TBM will be conveyed to the sedimentation tanks for treatment and most of the treated water will be reused, where applicable and as much as possible, in the boring operations.</li> </ul>	To minimise potential water quality impacts arising from the tunnel works	Tunnel boring sites	SENTX Contractor		✓			ProPECC PN 1/94 WPCO EIAO-TM Annex 6	Not applicable. Excavation of drainage tunnels is not required in the latest landfill design.
6.8.1	WQ8	<ul style="list-style-type: none"> <li>The fuel and waste lubricant oil from the on-site maintenance of machinery and equipment will be collected by a licensed chemical waste collector.</li> </ul>	To minimise potential water quality impacts arising from improper handling of fuel and oil	SENTX Site	SENTX Contractor		✓			ProPECC PN 1/94 WPCO Waste Disposal Ordinance (WDO)	Not applicable
6.8.1	WQ9	<ul style="list-style-type: none"> <li>Implementation of excavation schedules, lining and covering of excavated stockpiles</li> </ul>	To minimise contaminated stormwater run-off from the SENTX Site	All construction works	SENTX Contractor		✓			ProPECC PN 1/94 WPCO EIAO-TM Annex 6	Not applicable
6.13	WQ10	<ul style="list-style-type: none"> <li>Monitoring of surface water quality will be conducted on a regular basis as stated in the EM&amp;A Manual.</li> </ul>	To minimise potential water quality impacts on surface water arising from the construction works	SENTX Site	SENTX Contractor		✓			WPCO Water-TM	Implemented

EIA Ref.	EM&A Ref	Environmental Protection Measures/ Mitigation Measures	Objectives of the Recommended Measure & Main Concerns to address	Location of the Measures	Who to implement the measure?	When to implement the measure? <sup>(1)</sup>				What requirements or standards for the measure to achieve?	Implementation Status and Remarks
						D	C	O/R	A		
6.8.2	WQ11	<u>Sewage Effluents</u>  • Sufficient chemical toilets will be provided for the construction workforce.	To minimise potential water quality impacts arising from the sewage effluents	SENTX Site	SENTX Contractor			✓		WPCO	Implemented
6.8.2	WQ12	• Untreated sewage will not be allowed to discharge into the surrounding water body.	To minimise potential water quality impacts arising from the sewage effluents	SENTX Site	SENTX Contractor			✓		WPCO WDO	Deficiency of mitigation measures but rectified by the Contractor
6.8.2	WQ13	• A licensed waste collector will be employed to clean the chemical toilets on a regular basis.	To minimise potential water quality impacts arising from the sewage effluents	SENTX Site	SENTX Contractor			✓		WPCO WDO	Implemented
<b>Waste Management – Construction Phase</b>											
7.6.1	WM1	All the necessary waste disposal permits are obtained prior to the commencement of construction work.	To ensure compliance with relevant statutory requirements	Before construction works commence	SENTX Contractor	✓	✓			WDO	Implemented
7.6.1	WM2	<u>Management of Waste Disposal</u>  The construction contractor will open a billing account with the EPD. Every construction waste or public fill load to be transferred to the Government waste disposal facilities such as public fill reception facilities, sorting facilities, landfills will required a valid “chit” which contains the information of the account holder to facilitate waste	To ensure that adverse environmental impacts are prevented	SENTX Site	SENTX Contractor			✓		WDO  <i>Waste Disposal (Charges for Disposal of Construction Waste) Regulation;</i>  <i>Works Bureau Technical Circular No.31/2004; and</i>	Implemented



EIA Ref.	EM&A Ref	Environmental Protection Measures/ Mitigation Measures	Objectives of the Recommended Measure & Main Concerns to address	Location of the Measures	Who to implement the measure?	When to implement the measure? <sup>(1)</sup>				What requirements or standards for the measure to achieve?	Implementation Status and Remarks
						D	C	O/R	A		
		transaction recording and billing to the waste producer. A trip-ticket system will also be established to monitor the disposal of construction waste at the SENT Landfill and to control fly-tipping. The trip-ticket system will be included as one of the contractual requirements and implemented by the contractor.  A recording system for the amount of waste generated, recycled and disposed of (including the disposal sites) will be established.								<i>Annex 5 and Annex 6 of Appendix G of ETWBTC No. 19/2005)</i>	
7.6.1	WM3	<u>Measures for the Reduction of Construction Waste Generation</u>  Inert and non-inert construction waste will be segregated and stored in different containers or skips to facilitate reuse or recycling of the inert waste and proper disposal of the non-inert construction waste. Specific areas of the work site will be designated for such segregation and storage if immediate use is not practicable.	To reduce construction waste generation	SENTX Site	SENTX Contractor			✓		WDO <i>EIAO-TM Annex 7</i>	Implemented
7.6.1	WM4	<u>Chemical Waste</u>  The construction contractor will register as a chemical waste producer with the EPD. Chemical waste will be handled in accordance with the <i>Code of Practice on the Packaging, Handling and Storage of</i>	To ensure proper handling of chemical waste	SENTX Site	SENTX Contractor			✓		WDO <i>Code of Practice on the Packaging, Handling and Storage of Chemical Wastes</i>	Deficiency of mitigation measures but rectified by the Contractor

EIA Ref.	EM&A Ref	Environmental Protection Measures/ Mitigation Measures	Objectives of the Recommended Measure & Main Concerns to address	Location of the Measures	Who to implement the measure?	When to implement the measure? <sup>(1)</sup>				What requirements or standards for the measure to achieve?	Implementation Status and Remarks
						D	C	O/R	A		
<i>Chemical Wastes.</i>											
7.6.1	WM5	<u>Sewage</u> An adequate number of portable toilets will be provided at the site to ensure that sewage from site staff is properly collected. The portable toilets will be desludged and maintained regularly by a specialist contractor.	To ensure proper handling of sewage	SENTX Site	SENTX Contractor	✓				WDO EIAO-TM Annex 7	Implemented
7.6.1 and SENTX latest design	WM6	<u>General Refuse</u> General refuse will be stored in enclosed bins separately from construction and chemical wastes. The general refuse will be delivered to a transfer station or other landfill, separately from construction and chemical wastes, on a daily basis to reduce odour, pest and litter impacts.  Recycling bins will be provided at strategic locations to facilitate recovery of aluminium can and waste paper from the SENTX Site. Materials recovered will be sold for recycling.	To ensure proper handling of general refuse	SENTX Site	SENTX Contractor	✓				WDO EIAO-TM Annex 7	Deficiency of mitigation measures but rectified by the Contractor
7.6.1	WM7	<u>Staff Training</u> At the commencement of the construction works, training will be provided to workers on the concepts of site cleanliness and on appropriate waste management procedures, including	To ensure that adverse environmental impacts are prevented	SENTX Site	SENTX Contractor	✓					Implemented

EIA Ref.	EM&A Ref	Environmental Protection Measures/ Mitigation Measures	Objectives of the Recommended Measure & Main Concerns to address	Location of the Measures	Who to implement the measure?	When to implement the measure? <sup>(1)</sup>				What requirements or standards for the measure to achieve?	Implementation Status and Remarks
						D	C	O/R	A		
7.8	WM8	waste reduction, reuse and recycling.  <u>Environmental Monitoring &amp; Audit Requirements</u>  Weekly audits of the waste management practices will be carried out during the construction phase. The audits examine all aspects of waste management including waste generation, storage, recycling, transport and disposal.	To ensure that adverse environmental impacts are prevented	SENTX Site	SENTX Contractor		✓		WDO	Implemented	
<b>Landfill Gas Hazards - Design and Construction Phase</b>											
8.6.2 and SENTX latest design	LFG1	Precautionary measures to be adopted by the contractors at the Project site and the adjacent development site within the landfill consultation zone are outlined in Paragraphs 8.3 to 8.49 of EPD's <i>Landfill Gas Hazard Assessment Guidance Notes (the Guidance Note)</i> . Those precautionary measures applicable to the SENTX will be confirmed in the detailed Qualitative Landfill Gas Hazard Assessment to be submitted by the contractor.	To protect workers from landfill gas risk	All construction works area	SENTX Contractor		✓		<i>Paragraphs 8.3 to 8.49 of EPD's Landfill Gas Hazards Assessment Guidance Note</i>  <i>EIAO-TM Annex 7</i>	Implemented	
8.6.2	LFG2	Monitoring will be undertaken when construction works are carried out in confined space within the consultation zone with reference to the monitoring requirements and procedures specified in Paragraphs 8.23 to 8.28 of EPD's <i>Guidance Note</i> will be followed.	To protect workers from landfill gas risk	Confined space within the construction works area	SENTX Contractor		✓			Not applicable	

EIA Ref.	EM&A Ref	Environmental Protection Measures/ Mitigation Measures	Objectives of the Recommended Measure & Main Concerns to address	Location of the Measures	Who to implement the measure?	When to implement the measure? <sup>(1)</sup>				What requirements or standards for the measure to achieve?	Implementation Status and Remarks
						D	C	O/R	A		
		In the event of the trigger levels being exceeded, it is recommended that a person, such as the Safety Officer, is nominated, with deputies, to be responsible for dealing with any emergency which may occur due to landfill gas. In an emergency situation, the nominated person, or his deputies, shall have the necessary authority and shall ensure that the confined space is evacuated and the necessary works implemented for reducing the concentrations of gas. The appropriate organisations shall be contact.									
8.6.3	LFG4	Implementation of engineering measures according to Contract Specification requirements. These measures will include the placement of liner and installation of landfill gas management system to contain, manage and control landfill gas.	To protect workers from landfill gas risk	SENTX Site	SENTX Contractor	✓	✓	✓	✓	EIAO-TM Annex 7	Not applicable
8.6.3	LFG5	Engineering measures to significant engineering measures will be required in the design of the SENTX to protect the staff working in the infrastructure area. These measures include a combination of passive and active systems (examples are recommended in EPD's <i>Guidance Notes</i> ).  Landfill gas monitoring boreholes will be installed at the edge of the waste slope	To protect workers from landfill gas risk	Infrastructure Area	SENTX Contractor	✓	✓			EPD's <i>Landfill Gas Hazards Assessment Guidance Note</i>  EIAO-TM Annex 7	Not applicable

EIA Ref.	EM&A Ref	Environmental Protection Measures/ Mitigation Measures	Objectives of the Recommended Measure & Main Concerns to address	Location of the Measures	Who to implement the measure?	When to implement the measure? <sup>(1)</sup>				What requirements or standards for the measure to achieve?	Implementation Status and Remarks
						D	C	O/R	A		
		between the waste and the new infrastructure area to monitor the migration of landfill gas, if any.									
<b>Ecology – Construction Phase</b>											
9.10.2	EC1	Measures to control construction runoff: <ul style="list-style-type: none"> <li>Exposed soil areas will be minimised to reduce the contamination of runoff and erosion;</li> <li>To prevent stormwater runoff from washing across exposed soil surfaces, perimeter channels will be constructed in advance of site formation works and earthworks and intercepting channels will be provided for example along the edge of excavation;</li> <li>Silt removal facilities, channels and manholes will be maintained and the deposited silt and grit will be removed regularly to ensure they are functioning properly at all times;</li> <li>Temporary covers such as tarpaulin will also be provided to minimise the generation of high suspended solids runoff;</li> </ul>	To minimise potential water quality impacts affecting ecological resources	All construction works area	SENTX Contractor				✓	<i>EIAO-TM Annex 16</i> <i>ProPECC PN 1/94</i> <i>Water Pollution Control Ordinance (WPCO)</i> <i>EIAO-TM Annex 6</i>	Deficiency of mitigation measures but rectified by the Contractor  Deficiency of mitigation measures but rectified by the Contractor  Deficiency of mitigation measures but rectified by the Contractor  Implemented

EIA Ref.	EM&A Ref	Environmental Protection Measures/ Mitigation Measures	Objectives of the Recommended Measure & Main Concerns to address	Location of the Measures	Who to implement the measure?	When to implement the measure? <sup>(1)</sup>				What requirements or standards for the measure to achieve?	Implementation Status and Remarks			
						D	C	O/R	A					
		<ul style="list-style-type: none"> <li>The surface runoff contained any oil and grease will pass through the oil interceptors; and,</li> <li>Control measures, including implementation of excavation schedules, lining and covering of excavated stockpiles will be implemented to minimise contaminated stormwater run-off from the SENTX site.</li> </ul>								-	Not applicable			
										-	Not applicable			
9.10.2 and SENTX latest design	EC2	<u>Good Construction Practice:</u>												
		<ul style="list-style-type: none"> <li>Fences along the boundary of the SENTX Site will be erected before the commencement of works to prevent vehicle movements, and encroachment of personnel, onto adjacent areas.</li> <li>The work site boundaries will be regularly checked to ensure that they are not breached and that damage does not occur to surrounding areas.</li> </ul>	To minimise potential ecological impacts arising from the Project	SENTX Site	SENTX Contractor					✓	EIAO-TM Annex 16	Implemented		
9.12.1	EC9	<u>Environmental Monitoring &amp; Audit Requirements</u>												
		The implementation of the ecological mitigation measures should be checked as part of the environmental monitoring and audit procedures during the	To ensure that adverse ecological impacts are prevented	SENTX	SENTX Contractor					✓	✓	✓	EIAO-TM Annex 16	Implemented

EIA Ref.	EM&A Ref	Environmental Protection Measures/ Mitigation Measures	Objectives of the Recommended Measure & Main Concerns to address	Location of the Measures	Who to implement the measure?	When to implement the measure? <sup>(1)</sup>				What requirements or standards for the measure to achieve?	Implementation Status and Remarks
						D	C	O/R	A		
construction period.											
<b>Landscape and Visual – Construction Phase</b>											
10.6.5	LV1	CM1 - The construction area and area allowed for the contractor's office, leachate treatment plant and laboratory areas will be minimised to a practical minimum, to avoid impacts on adjacent landscape.	To minimise the landscape and visual impacts	SENTX Site	SENTX Contractor	✓				<i>EIAO-TM Annex 18 and ETWBC 3/2006</i>	Not applicable
10.6.5	LV2	CM2 - Topsoil, where identified, will be stripped and stored for re-use in the construction of the soft landscape works, where practical. The Contract Specification will include storage and reuse of topsoil as appropriate.	To minimise the landscape and visual impacts	All construction works area	SENTX Contractor	✓				<i>EIAO-TM Annex 18</i>	Implemented
10.6.5	LV3	CM3 - All existing trees at the edges of the landfill will be carefully protected during construction. Detailed Tree Protection Specification will be provided in the Contract Specification. Under this Specification, the Contractor will be required to submit, for approval, a detailed working method statement for the protection of trees prior to undertaking any works adjacent to all retained trees, including trees in Contractor's works areas.	To minimise the landscape and visual impacts	Potential impacted area	SENTX Contractor	✓				<i>EIAO-TM Annex 18 and ETWBC 3/2006</i>	Implemented
10.6.5	LV4	CM4 - Trees unavoidably affected by the works will be transplanted, where necessary and practical. A detailed Tree	To minimise the landscape and visual impacts	Potential impacted area	SENTX Contractor	✓	✓			<i>EIAO-TM Annex 18 and ETWBC 3/2006</i>	Not applicable

EIA Ref.	EM&A Ref	Environmental Protection Measures/ Mitigation Measures	Objectives of the Recommended Measure & Main Concerns to address	Location of the Measures	Who to implement the measure?	When to implement the measure? <sup>(1)</sup>				What requirements or standards for the measure to achieve?	Implementation Status and Remarks
						D	C	O/R	A		
		Transplanting Specification will be provided in the Contract Specification, if applicable. Sufficient time for necessary tree root and crown preparation periods will be allowed in the project programme.									
10.6.5 and SENTX latest design	LV5	CM5 - Within 3 months of taking possession of the SENTX Site, the Contractor will plant advance screen planting of native species at Light Standard size at 1.5m centres along the High Junk Peak Trail so as to screen views of the Works from the trail. Tree planting locations will be agreed with AFCD. Works will be completed within 9 months of taking possession of the SENTX Site.	To minimise the landscape and visual impacts	At High Junk Peak Hiking Trail	SENTX Contractor		✓			<i>EIAO-TM Annex 18</i>	Implemented
10.6.5	LV6	CM6 - The Contractor's office, leachate treatment plant and laboratory will be given an aesthetic treatment in earth tones to reduce their visual impact and albedo and blend them into the surrounding landscape.	To minimise the landscape and visual impacts	Infrastructure area	SENTX Contractor	✓	✓			<i>EIAO-TM Annex 18</i>	Not applicable
10.6.5	LV7	CM7 - The Contractor's office, leachate treatment plant and laboratory will be surrounded by a minimum of 5m wide and 0.75m high earth bund on the west and south sides planted with a dense screen of tree and shrub vegetation. Additional tree planting will be provided in unused spaces with thin infrastructure	To minimise the landscape and visual impacts	Infrastructure area	SENTX Contractor	✓	✓			<i>EIAO-TM Annex 18 and ETWBC 7/2002</i>	Not applicable



EIA Ref.	EM&A Ref	Environmental Protection Measures/ Mitigation Measures	Objectives of the Recommended Measure & Main Concerns to address	Location of the Measures	Who to implement the measure?	When to implement the measure? <sup>(1)</sup>				What requirements or standards for the measure to achieve?	Implementation Status and Remarks
						D	C	O/R	A		
		site, along access roads and in and around car parks. This will be supplemented with shrub planting, where appropriate.									
10.6.5	LV8	CM8 - Planting trials will be carried out in an on-site nursery prior to implementation of the first phase of restoration to establish the best planting matrix and management intensity of the recommended plant materials for the restoration.	To minimise the landscape and visual impacts	SENTX Site	SENTX Contractor		✓			<i>EIAO-TM Annex 18</i>	Not applicable
11.4.1 and SENTX latest design	LV9	During the preparation of the detailed landscape design plan, the design submission will be audited against the recommendation proposed in the <i>ER Report</i> by the Registered Landscape Architect from the ET.	To ensure the implementation of mitigation measures proposed in this EIA Report	SENTX Site	SENTX Contractor/E T	✓	✓			<i>EIAO-TM Annex 18</i>	Implemented

Annex C

## Monitoring Schedule for This Reporting Period

**South East New Territories (SENT) Landfill Extension  
EM&A Impact Monitoring Schedule during Construction Phase**

April 2019

Sun	Mon	Tue	Wed	Thu	Fri	Sat
	1	2	3	4 Dust Monitoring Surface Water Monitoring (pm) Noise Monitoring (pm)	5	6
7	8	9	10 Dust Monitoring Surface Water Monitoring (pm) Noise Monitoring (pm)	11	12	13
14	15	16 Dust Monitoring	17	18 Surface Water Monitoring (pm) Noise Monitoring (pm)	19	20
21	22 Dust Monitoring	23	24 Surface Water Monitoring (pm) Noise Monitoring (pm)	25	26	27
28 Dust Monitoring	29	30				

Note:  
Impact dust monitoring will be conducted at two monitoring stations (DM1 and DM2) under the on-going EM&A programme TKO Area 137 Fill Bank and the results will be shared with SENTX.

**South East New Territories (SENT) Landfill Extension  
EM&A Impact Monitoring Schedule during Construction Phase**

May 2019

Sun	Mon	Tue	Wed	Thu	Fri	Sat
			1	2 Surface Water Monitoring (pm) Noise Monitoring (pm)	3	4 Dust Monitoring
5	6	7	8 Surface Water Monitoring (pm) Noise Monitoring (pm)	9	10 Dust Monitoring	11
12	13	14	15	16 Dust Monitoring Surface Water Monitoring (pm) Noise Monitoring (pm)	17	18
19	20	21	22 Dust Monitoring	23 Surface Water Monitoring (pm) Noise Monitoring (pm)	24	25
26	27	28 Dust Monitoring	29	30 Surface Water Monitoring (pm) Noise Monitoring (pm)	31	

Note:  
Impact dust monitoring will be conducted at two monitoring stations (DM1 and DM2) under the on-going EM&A programme TKO Area 137 Fill Bank and the results will be shared with SENTX.

**South East New Territories (SENT) Landfill Extension  
EM&A Impact Monitoring Schedule during Construction Phase**

June 2019

Sun	Mon	Tue	Wed	Thu	Fri	Sat
						1
2	3 Dust Monitoring	4	5	6 Surface Water Monitoring (pm) Noise Monitoring (pm)	7	8
9 Dust Monitoring	10	11	12	13	14 Surface Water Monitoring (pm) Noise Monitoring (pm)	15 Dust Monitoring
16	17	18	19	20 Surface Water Monitoring (pm) Noise Monitoring (pm)	21 Dust Monitoring	22
23	24	25	26	27 Surface Water Monitoring (pm) Noise Monitoring (pm) Dust Monitoring	28	29
30						

Note:

Impact dust monitoring will be conducted at two monitoring stations (DM1 and DM2) under the on-going EM&A programme TKO Area 137 Fill Bank and the results will be shared with SENTX.

Annex D

## Air Quality

Annex D1

## 24-hour TSP Monitoring Results

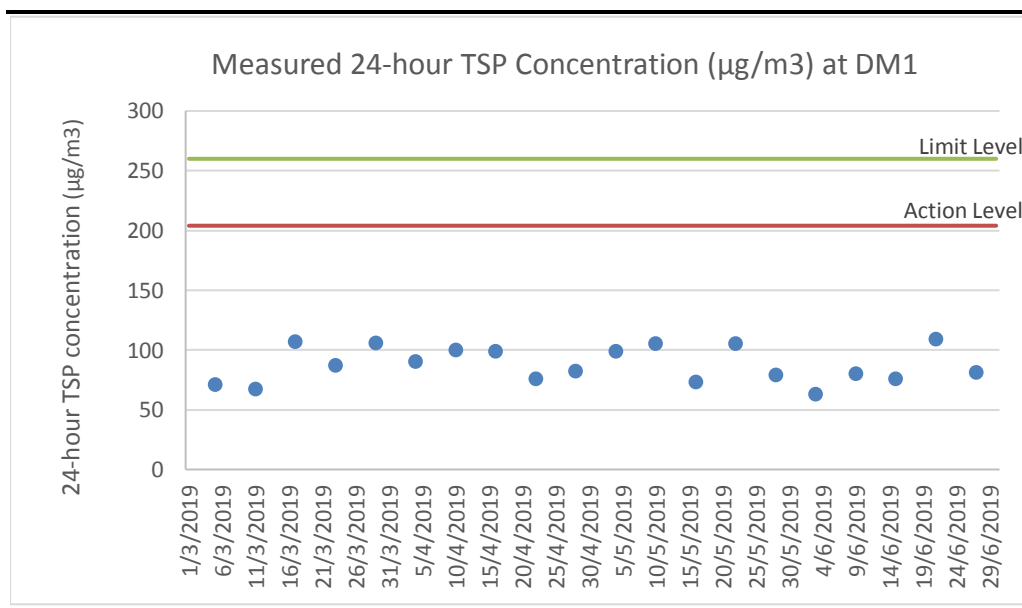
**Table D1.1 24-hour TSP Monitoring Results at DM1**

Start Date	Start Time	Finish Date	Finish Time	Weather	24-hour TSP ( $\mu\text{g}/\text{m}^3$ )
4 Apr 19	8:00	5 Apr 19	8:00	Fine	90
10 Apr 19	14:30	11 Apr 19	14:30	Fine	100
16 Apr 19	8:00	17 Apr 19	8:00	Fine	99
22 Apr 19	8:00	23 Apr 19	8:00	Fine	76
28 Apr 19	8:00	29 Apr 19	8:00	Fine	82
4 May 19	8:00	5 May 19	8:00	Fine	99
10 May 19	9:00	11 May 19	9:00	Fine	105
16 May 19	8:30	17 May 19	8:30	Fine	73
22 May 19	16:10	23 May 19	16:10	Fine	105
28 May 19	8:00	29 May 19	8:00	Rainy	79
3 Jun 19	9:30	4 Jun 19	9:30	Rainy	63
9 Jun 19	8:30	10 Jun 19	8:30	Fine	80
15 Jun 19	8:00	16 Jun 19	8:00	Cloudy	76
21 Jun 19	9:00	22 Jun 19	9:00	Rainy	109
27 Jun 19	8:30	28 Jun 19	8:30	Rainy	81
<b>Average</b>					88
<b>Min</b>					63
<b>Max</b>					109

**Note:**

DM1 corresponds to the existing TSP monitoring station TKO-A1 currently operating by CEDD.

**Figure D1.1 Graphical Presentation for 24-hr TSP Monitoring at DM1**





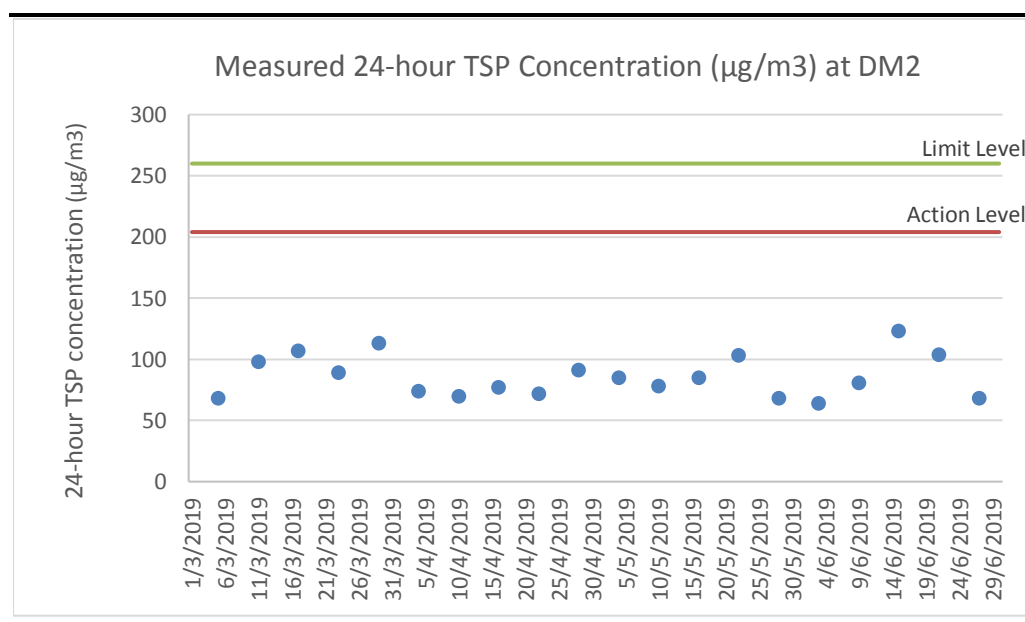
**Table D1.2 24-hour TSP Monitoring Results at DM2**

Start Date	Start Time	Finish Date	Finish Time	Weather	24-hour TSP ( $\mu\text{g}/\text{m}^3$ )
4 Apr 19	8:00	5 Apr 19	8:00	Fine	74
10 Apr 19	14:38	11 Apr 19	14:38	Fine	70
16 Apr 19	8:00	17 Apr 19	8:00	Fine	77
22 Apr 19	8:00	23 Apr 19	8:00	Fine	72
28 Apr 19	8:00	29 Apr 19	8:00	Fine	91
4 May 19	8:00	5 May 19	8:00	Fine	85
10 May 19	9:15	11 May 19	9:15	Fine	78
16 May 19	8:30	17 May 19	8:30	Fine	85
22 May 19	14:50	23 May 19	14:50	Fine	103
28 May 19	8:00	29 May 19	8:00	Rainy	68
3 Jun 19	9:30	4 Jun 19	9:30	Rainy	64
9 Jun 19	8:30	10 Jun 19	8:30	Fine	81
15 Jun 19	8:00	16 Jun 19	8:00	Cloudy	123
21 Jun 19	9:25	22 Jun 19	9:25	Rainy	104
27 Jun 19	8:30	28 Jun 19	8:30	Rainy	68
<b>Average</b>					83
<b>Min</b>					64
<b>Max</b>					123

**Note:**

DM2 corresponds to the existing TSP monitoring station TKO-A2a currently operating by CEDD.

**Figure D1.2 Graphical Presentation for 24-hr TSP Monitoring at DM2**



Annex D2

## Event and Action Plan for Dust Monitoring

**Annex D2**     *Event and Action Plan for Dust Monitoring During Construction Phase*

Event	Action		
	ET	IEC	Contractor
<i>Action Level</i>			
Exceedance for one sample	<ul style="list-style-type: none"> <li>Identify the source(s) and investigate the cause(s) of exceedance</li> <li>Prepare Notification of Exceedance within 24 hours</li> <li>Inform Contractor, IEC and Project Proponent whether the cause of exceedance is due to the Project</li> <li>Repeat measurement to confirm finding if exceedance is due to the Project</li> <li>Increase monitoring frequency to daily if exceedance is due to the Project and continue until the monitoring results reduce to below action level</li> </ul>	<ul style="list-style-type: none"> <li>Verify the Notification of Exceedance</li> <li>Check monitoring data submitted by ET</li> <li>Check Contractor's working methods</li> </ul>	<ul style="list-style-type: none"> <li>Rectify any unacceptable practice</li> <li>Amend working methods if appropriate</li> </ul>
Exceedance for two or more consecutive samples	<ul style="list-style-type: none"> <li>Identify the source(s) and investigate the cause(s) of exceedance</li> <li>Prepare Notification of Exceedance within 24 hours</li> <li>Inform Contractor, IEC and Project Proponent whether the cause of exceedance is due to the Project</li> <li>Discuss with Contractor and IEC for remedial measures required</li> <li>Ensure remedial measures are properly implemented</li> <li>If exceedance continues, arrange meeting with Contractor &amp; IEC</li> <li>Continue monitoring at daily intervals if exceedance is due to the Project</li> <li>If no exceedance for 3 consecutive days, cease additional monitoring</li> </ul>	<ul style="list-style-type: none"> <li>Verify the Notification of Exceedance</li> <li>Check monitoring data submitted by ET</li> <li>Check Contractor's working methods</li> <li>Discuss with ET and Contractor on proposed remedial measures</li> <li>Review proposals on remedial measures</li> <li>Audit the implementation of the remedial measures</li> <li>Audit the effectiveness of the implemented remedial measures</li> </ul>	<ul style="list-style-type: none"> <li>Submit proposals for remedial measures to IEC</li> <li>Implement the agreed proposals</li> <li>Amend proposal if appropriate</li> </ul>

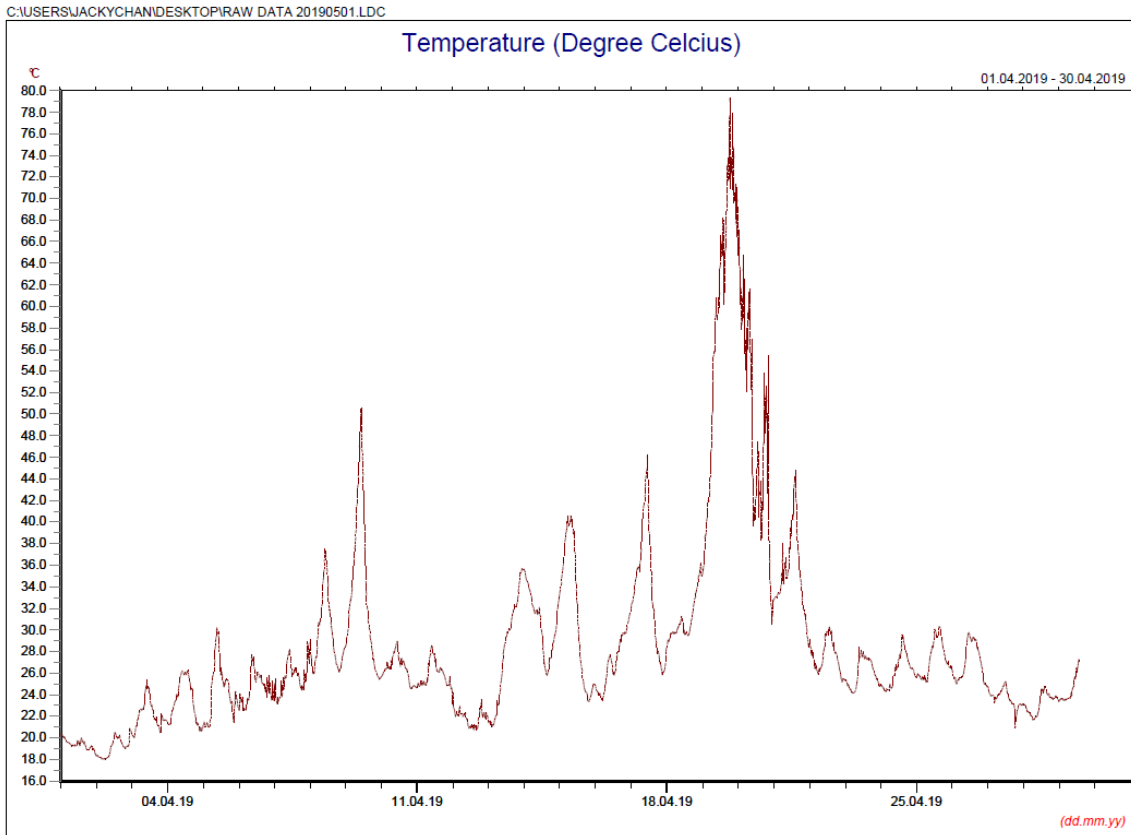
Event	Action		
	ET	IEC	Contractor
<i>Limit Level</i>			
Exceedance for one sample	<ul style="list-style-type: none"> <li>Identify the source(s) and investigate the cause(s) of exceedance</li> <li>Prepare Notification of Exceedance within 24 hours</li> <li>Inform Contractor, IEC, Project Proponent and EPD whether the cause of exceedance is due to the Project</li> <li>Discuss with Contractor and IEC for remedial measures required</li> <li>Ensure remedial measures are properly implemented</li> <li>Repeat measurement to confirm finding if exceedance is due to the Project</li> <li>Increase monitoring frequency to daily if exceedance is due to the Project and continue until the monitoring results reduce to below limit level</li> </ul>	<ul style="list-style-type: none"> <li>Verify the Notification of Exceedance</li> <li>Check monitoring data submitted by ET</li> <li>Check Contractor's working methods</li> <li>Discuss with ET and Contractor on proposed remedial measures</li> <li>Review proposals on remedial measures</li> <li>Audit the implementation of the remedial measures</li> <li>Audit the effectiveness of the implemented remedial measures</li> </ul>	<ul style="list-style-type: none"> <li>Take immediate action to avoid further exceedance</li> <li>Submit proposals for remedial measures to IEC</li> <li>Implement the agreed proposals</li> <li>Amend proposal if appropriate</li> </ul>
Exceedance for two or more consecutive samples	<ul style="list-style-type: none"> <li>Identify source(s) and investigate the cause(s) of exceedance</li> <li>Prepare Notification of Exceedance within 24 hours</li> <li>Inform Contractor, IEC, Project Proponent and EPD the causes &amp; actions taken for the exceedances</li> <li>Discuss with Contractor and IEC for remedial measures required</li> <li>Ensure remedial measures are properly implemented</li> <li>Continue monitoring at daily intervals if exceedance is due to the Project</li> <li>If no exceedance for 3 consecutive days, cease additional monitoring</li> <li>If exceedance due to the Project continues, consider what portion of the work is responsible and stop that portion of work until the exceedance is abated</li> </ul>	<ul style="list-style-type: none"> <li>Verify the Notification of Exceedance</li> <li>Check monitoring data submitted by ET</li> <li>Check Contractor's working methods</li> <li>Discuss with ET and Contractor on proposed remedial measures</li> <li>Review proposals on remedial measures</li> <li>Audit the implementation of the remedial measures</li> <li>Audit the effectiveness of the implemented remedial measures</li> </ul>	<ul style="list-style-type: none"> <li>Take immediate action to avoid further exceedance</li> <li>Submit proposals for remedial measures to IEC</li> <li>Implement the agreed proposals</li> <li>Resubmit proposals if problem still not under control</li> </ul>

Annex D3

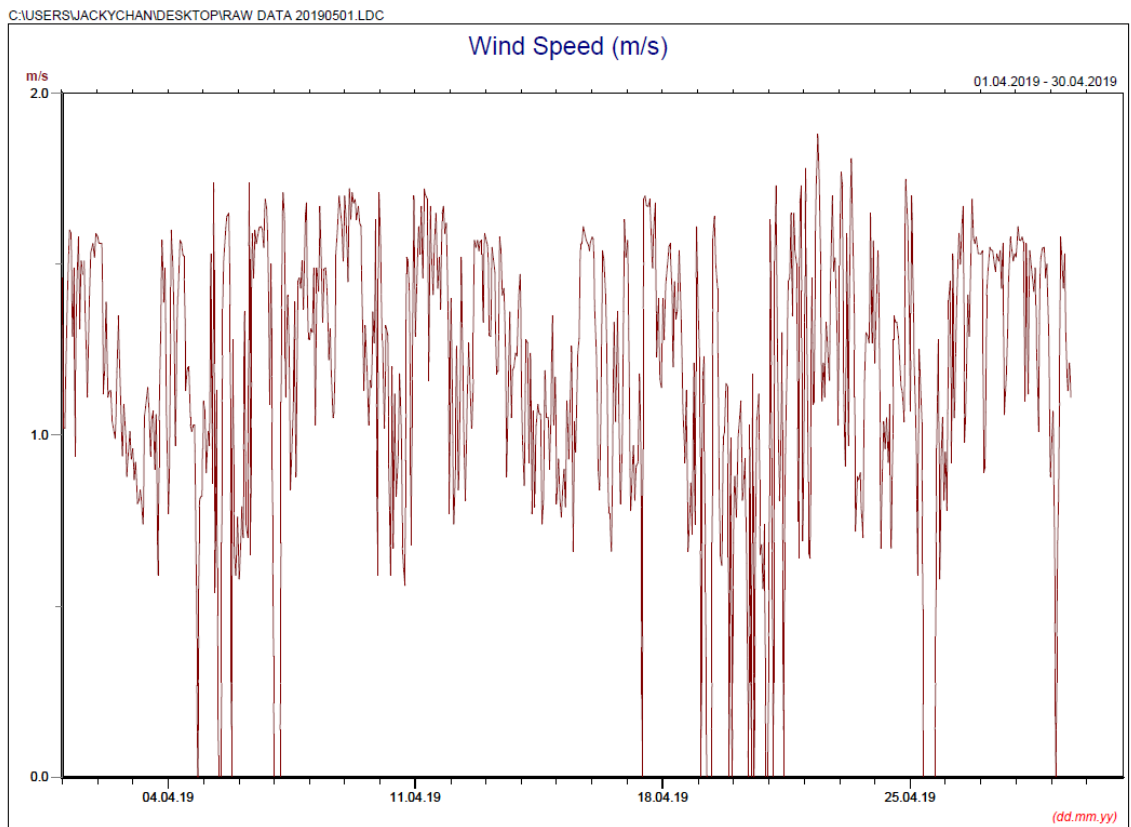
## Meteorological Data

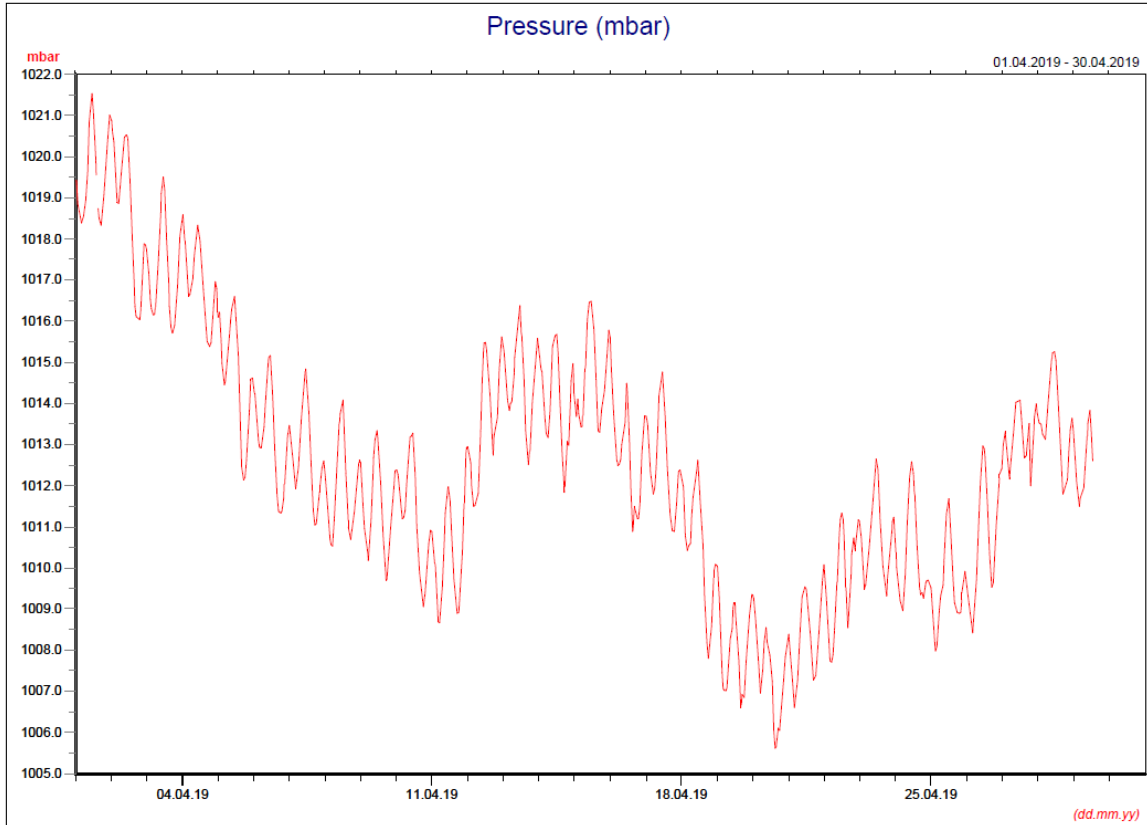
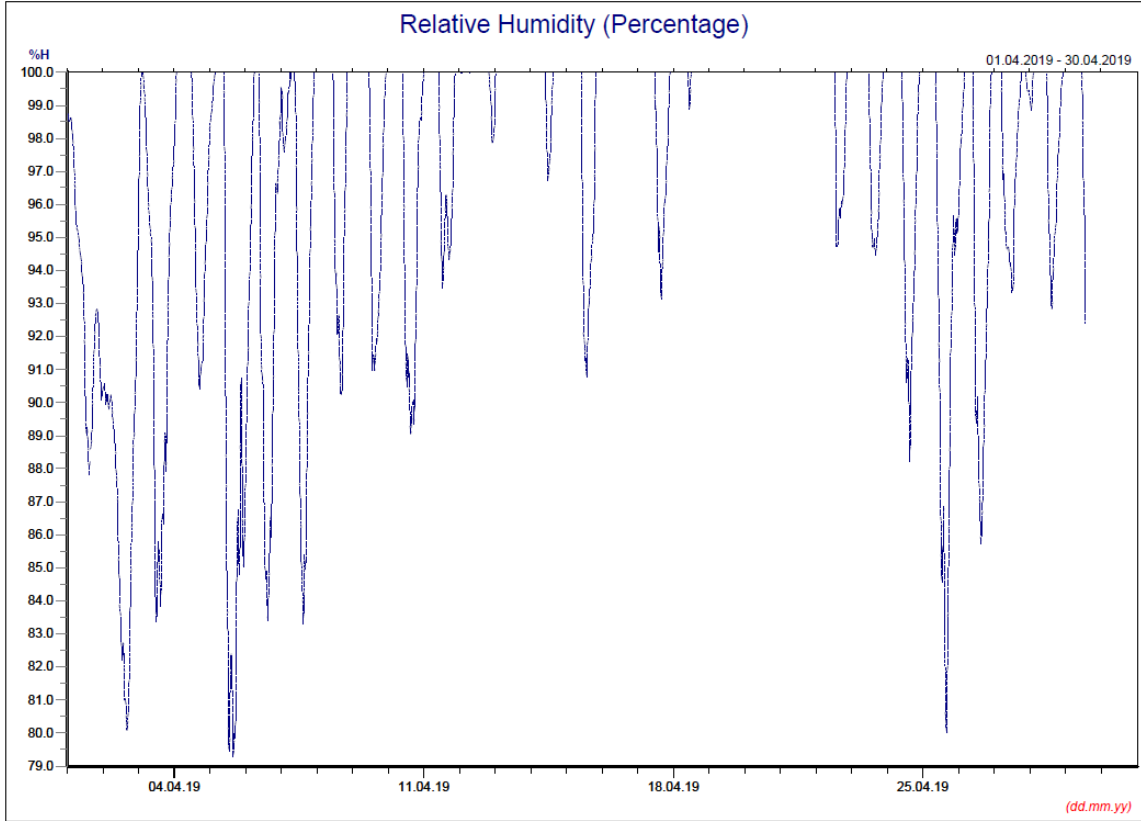
*Annex D3 Meteorological Data*

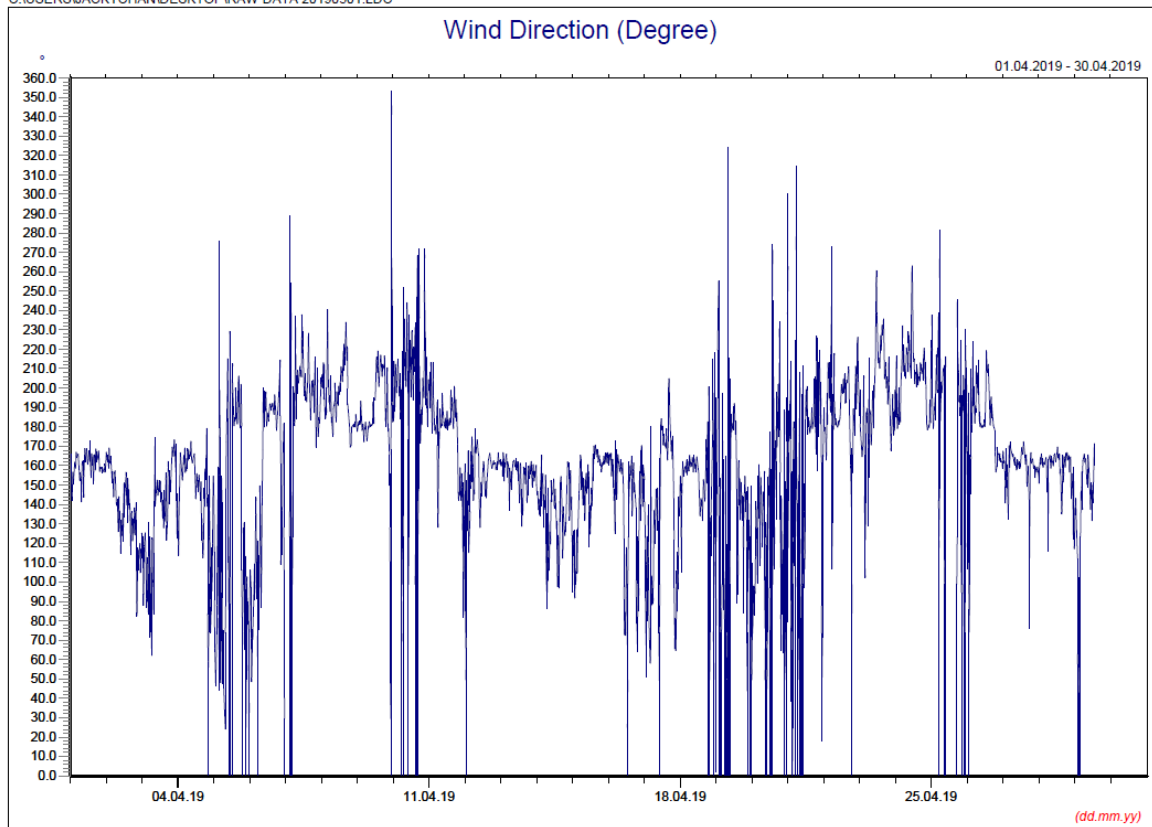
April 2019



\* Note: Data on 20 April 2019 was discarded due to equipment failure.







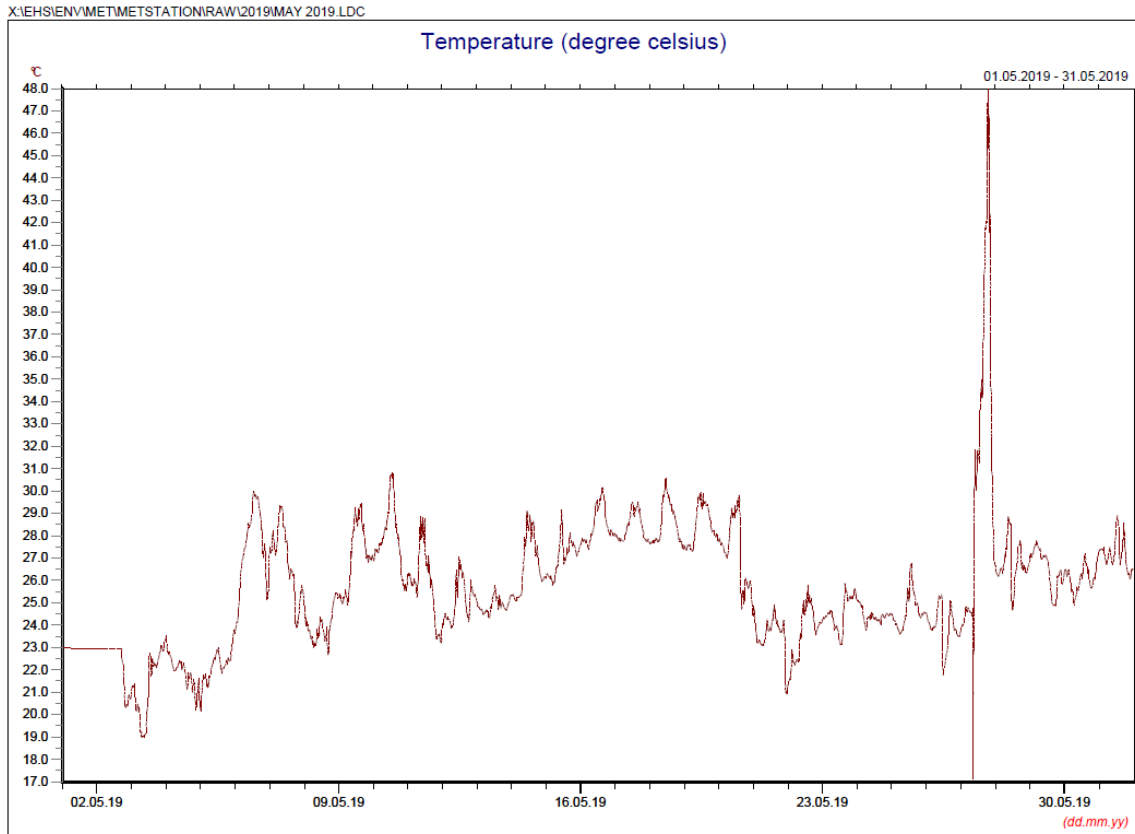
### Manual Rain Gauge Readings

April 2019

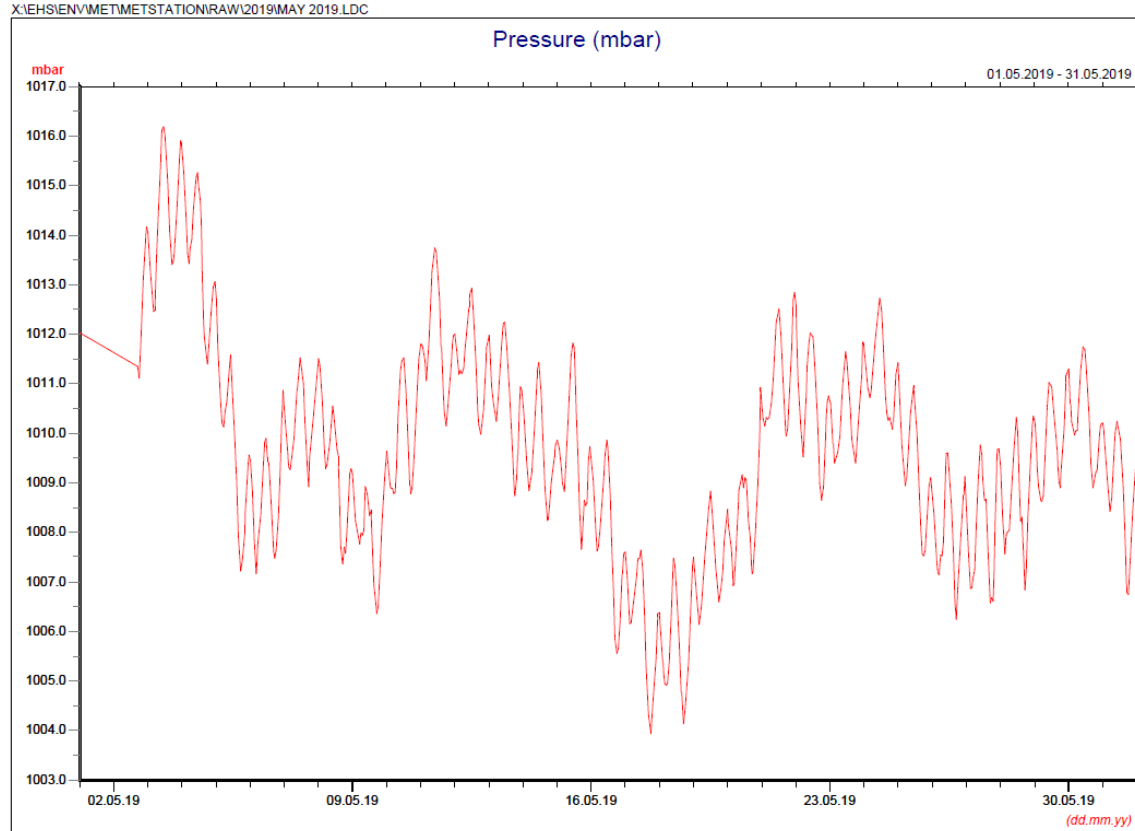
Date	Rainfall (mm)
1 Apr 19	0.2
2 Apr 19	0.0
3 Apr 19	0.4
4 Apr 19	0.0
5 Apr 19	0.0
6 Apr 19	0.0
7 Apr 19	0.0
8 Apr 19	0.0
9 Apr 19	0.0
10 Apr 19	0.0
11 Apr 19	0.5
12 Apr 19	23.8
13 Apr 19	1.6
14 Apr 19	10.2
15 Apr 19	3.7
16 Apr 19	8.2
17 Apr 19	0.2
18 Apr 19	23.4
19 Apr 19	95.4
20 Apr 19	28.9
21 Apr 19	0.3
22 Apr 19	0.0
23 Apr 19	0.0
24 Apr 19	0.0
25 Apr 19	0.0
26 Apr 19	0.1
27 Apr 19	15.2
28 Apr 19	0.1
29 Apr 19	0.0
30 Apr 19	13.9
<b>TOTAL RAINFALL</b>	<b>226.1</b>



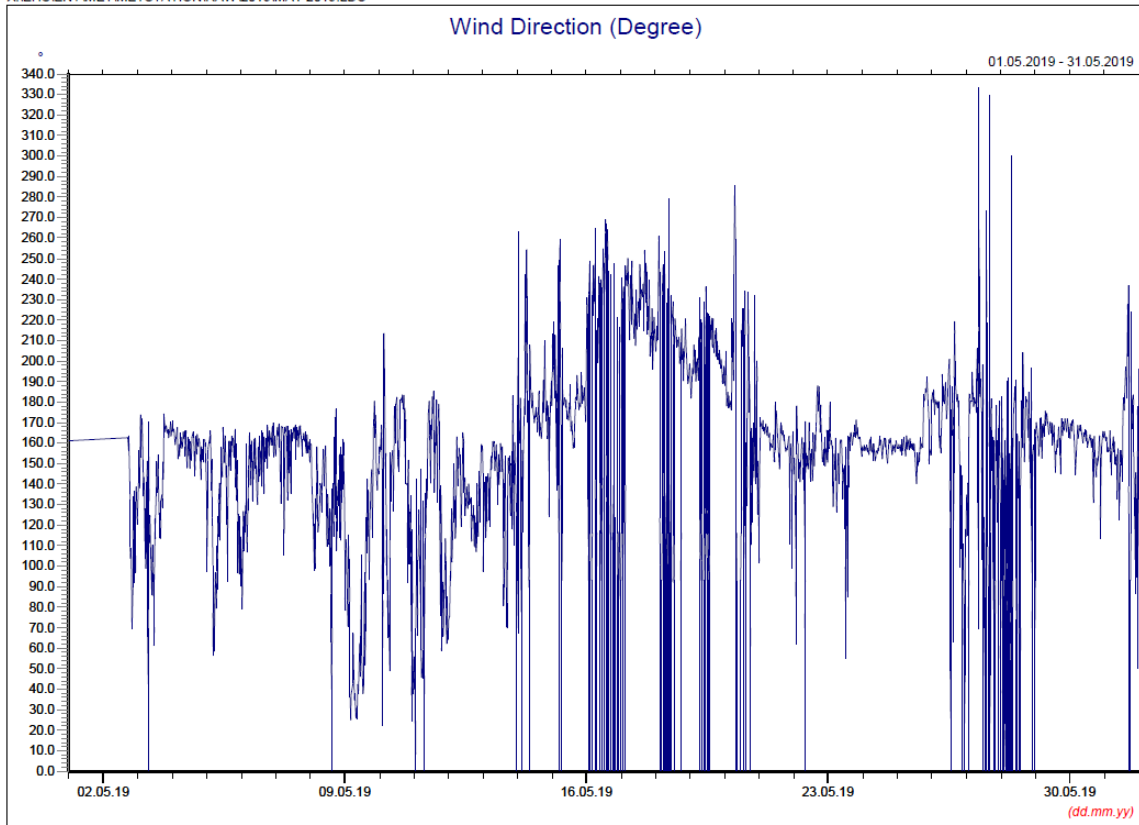
May 2019



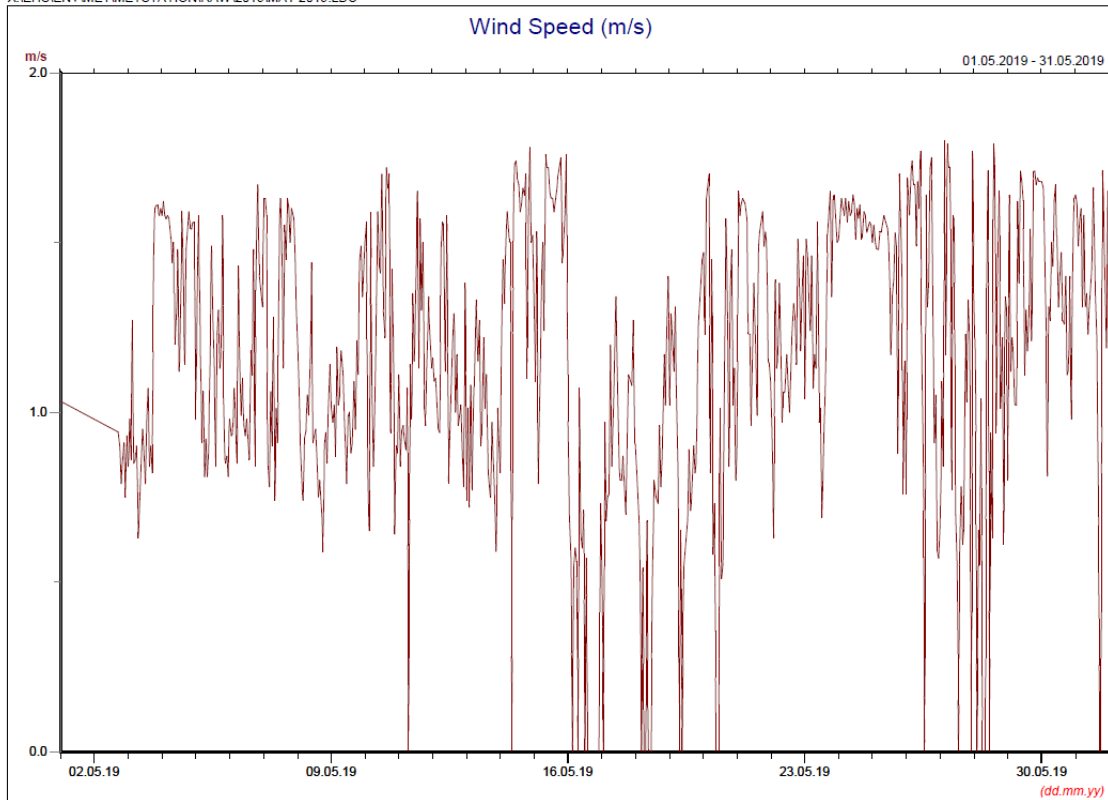
\* Note: Data from 1 May 00:00 to 2 May 2019 17:00 was lost due to malfunction of the meteorological station. Data on 27 May 2019 was discarded due to equipment failure.



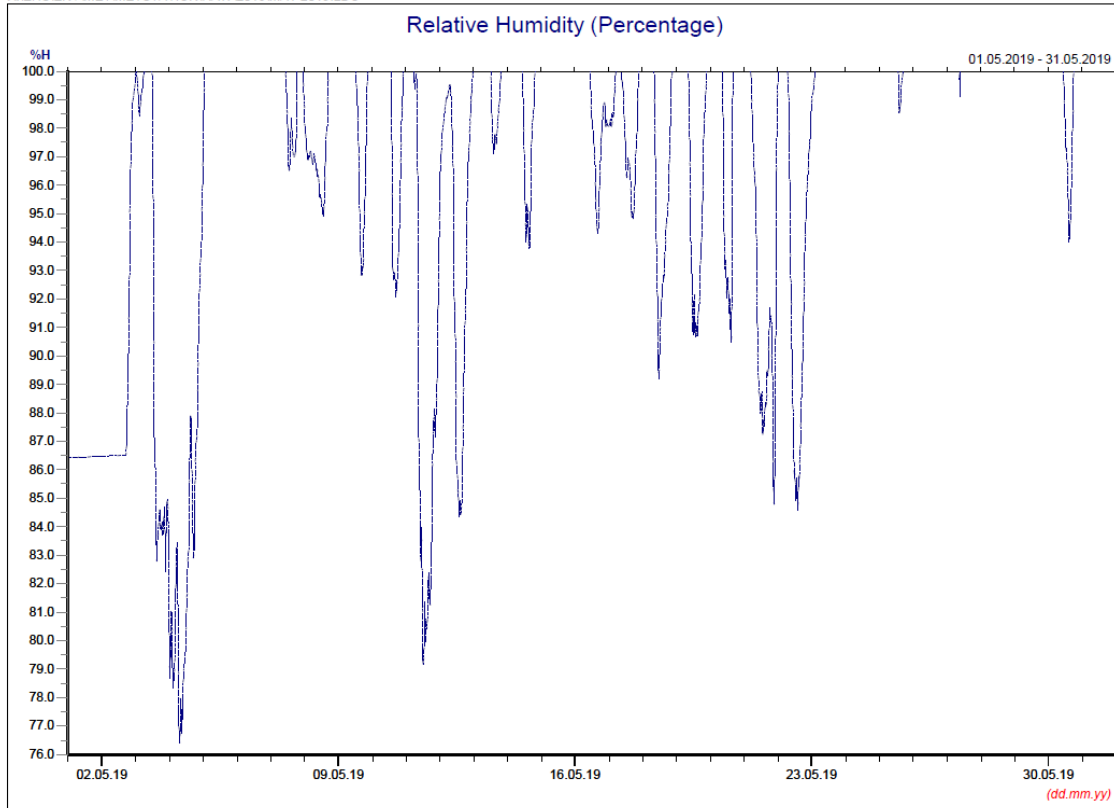
\* Note: Data from 1 May 00:00 to 2 May 2019 17:00 was lost due to malfunction of the meteorological station.



\* Note: Data from 1 May 00:00 to 2 May 2019 17:00 was lost due to malfunction of the meteorological station.



\* Note: Data from 1 May 00:00 to 2 May 2019 17:00 was lost due to malfunction of the meteorological station.



\* Note: Data from 1 May 00:00 to 2 May 2019 17:00 was lost due to malfunction of the meteorological station.

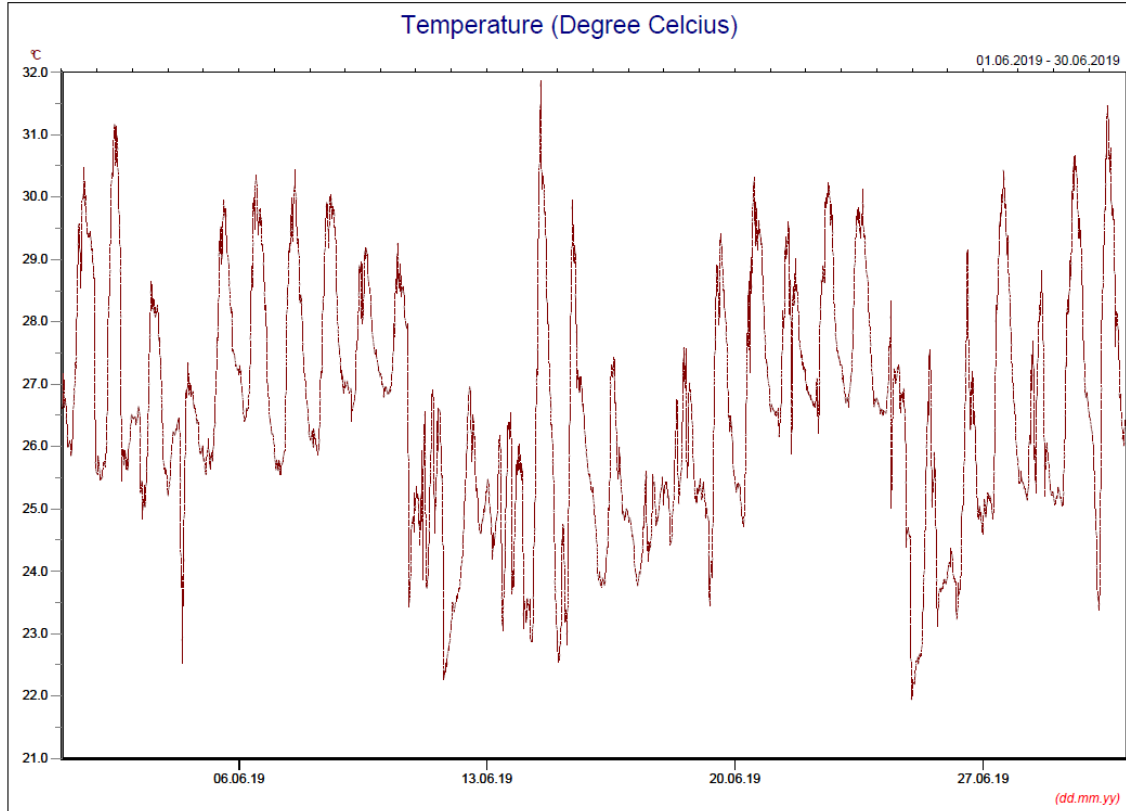
### Manual Rain Gauge Readings

May 2019

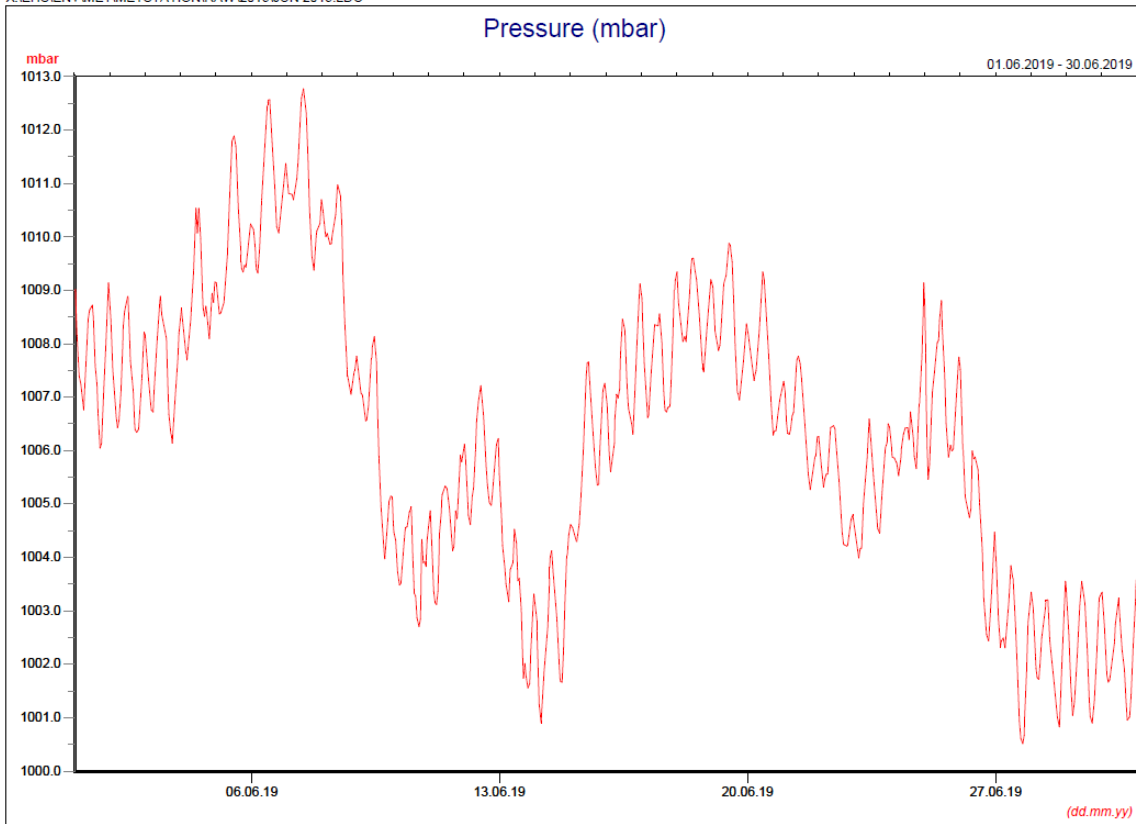
Date	Rainfall (mm)
1 May 19	2.8
2 May 19	9.5
3 May 19	0.1
4 May 19	34.4
5 May 19	14.0
6 May 19	21.7
7 May 19	23.7
8 May 19	37.0
9 May 19	0.1
10 May 19	0.0
11 May 19	0.0
12 May 19	0.4
13 May 19	0.1
14 May 19	0.0
15 May 19	0.0
16 May 19	0.0
17 May 19	0.0
18 May 19	0.0
19 May 19	0.0
20 May 19	20.2
21 May 19	15.1
22 May 19	2.0
23 May 19	51.0
24 May 19	0.8
25 May 19	6.2
26 May 19	19.2
27 May 19	18.6
28 May 19	34.7
29 May 19	26.6
30 May 19	3.0
31 May 19	47.4
<b>TOTAL RAINFALL</b>	<b>388.6</b>

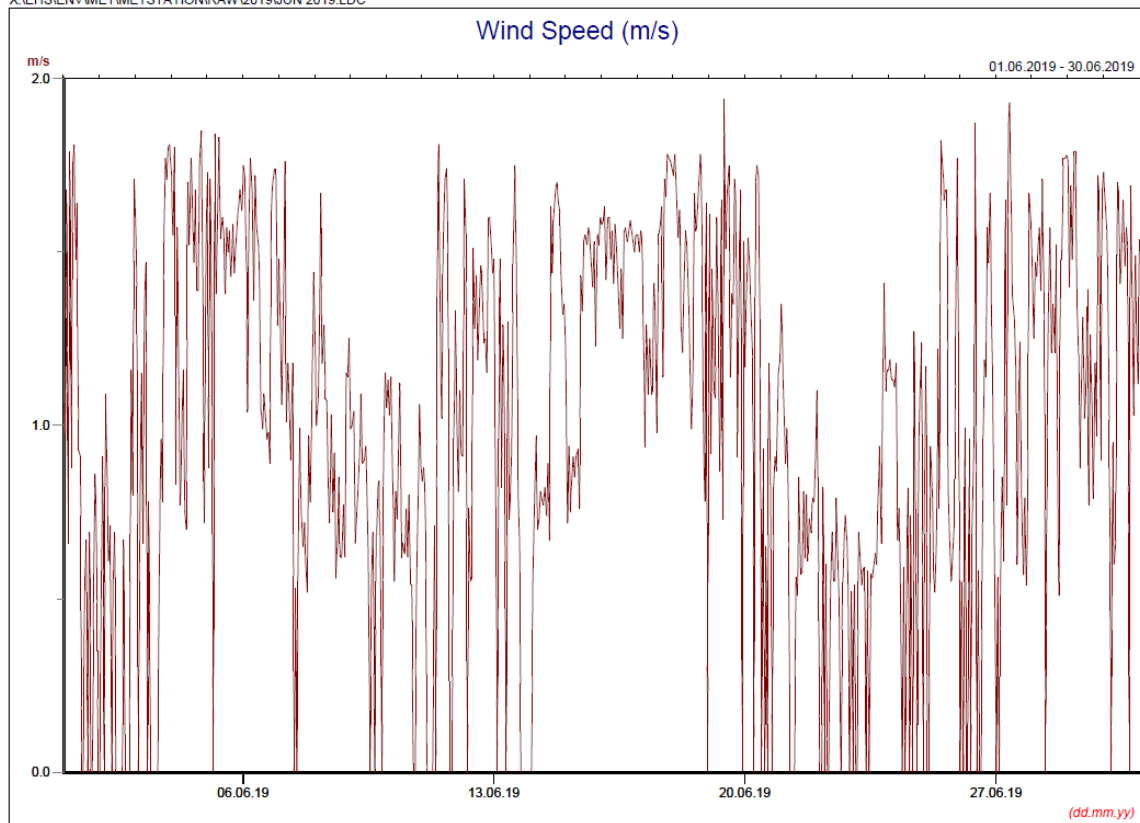
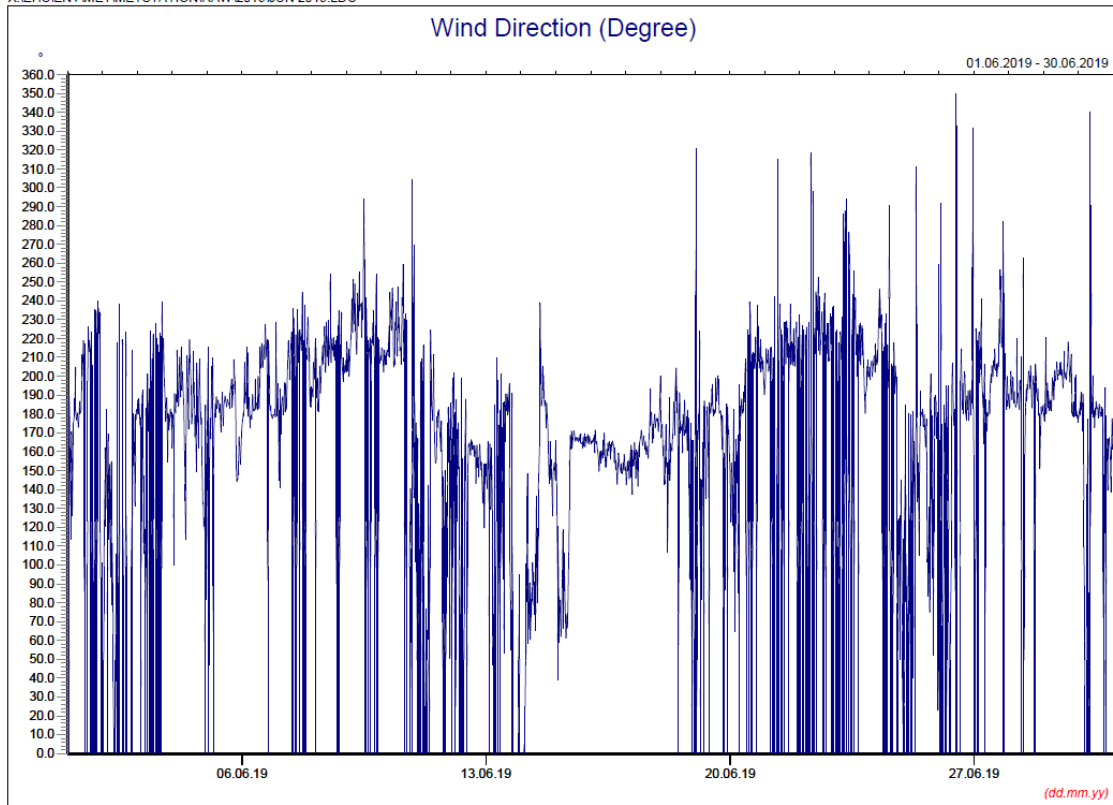
June 2019

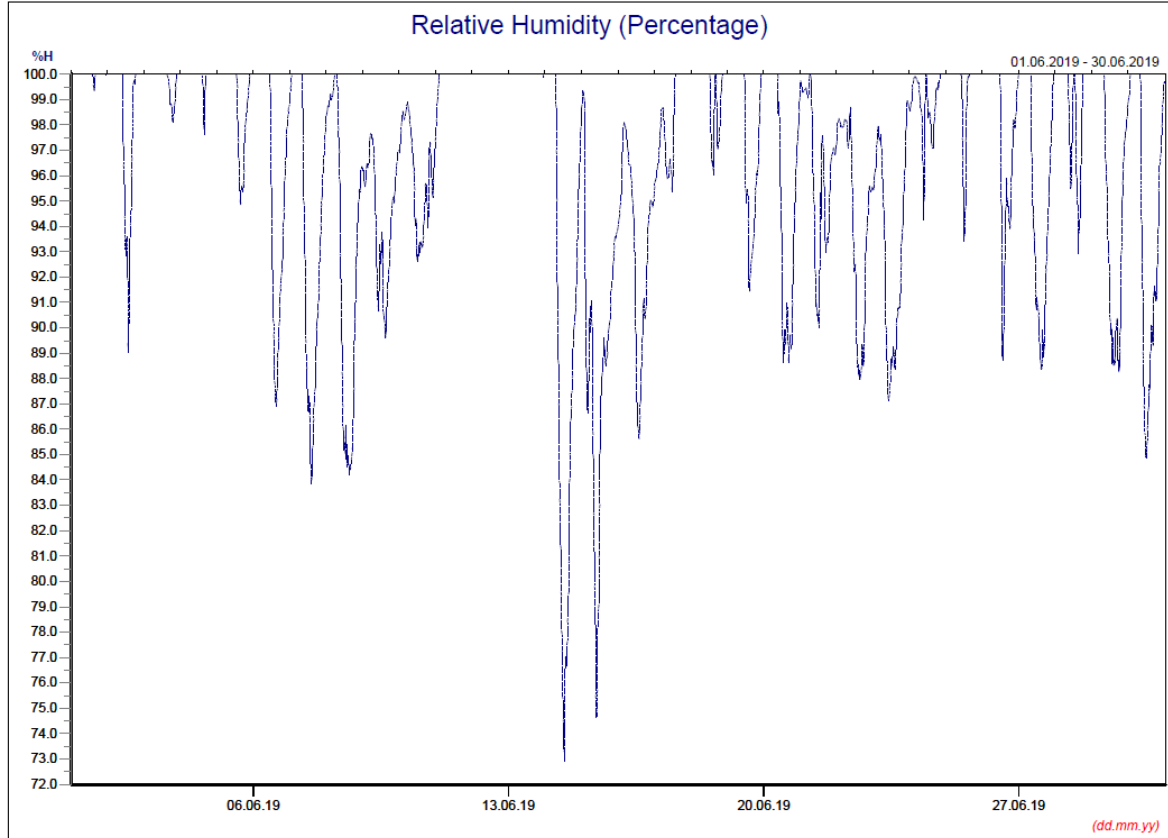
X:\EHS\ENV\MET\METSTATION\RAW\2019\JUN 2019.LDC



X:\EHS\ENV\MET\METSTATION\RAW\2019\JUN 2019.LDC







### Manual Rain Gauge Readings

June 2019

Date	Rainfall (mm)
1 Jun 19	6.0
2 Jun 19	27.0
3 Jun 19	13.0
4 Jun 19	142.0
5 Jun 19	0.2
6 Jun 19	2.0
7 Jun 19	0.0
8 Jun 19	1.0
9 Jun 19	1.2
10 Jun 19	73.0
11 Jun 19	17.2
12 Jun 19	6.5
13 Jun 19	68.4
14 Jun 19	0.2
15 Jun 19	0.0
16 Jun 19	0.0
17 Jun 19	6.8
18 Jun 19	18.8
19 Jun 19	1.4
20 Jun 19	2.4
21 Jun 19	8.8
22 Jun 19	2.4
23 Jun 19	0.0
24 Jun 19	20.6
25 Jun 19	50.2
26 Jun 19	0.8
27 Jun 19	0.0
28 Jun 19	27.0
29 Jun 19	4.3
30 Jun 19	7.5
<b>TOTAL RAINFALL</b>	<b>508.7</b>

Annex E

## Noise

Annex E1

## Noise Monitoring Results



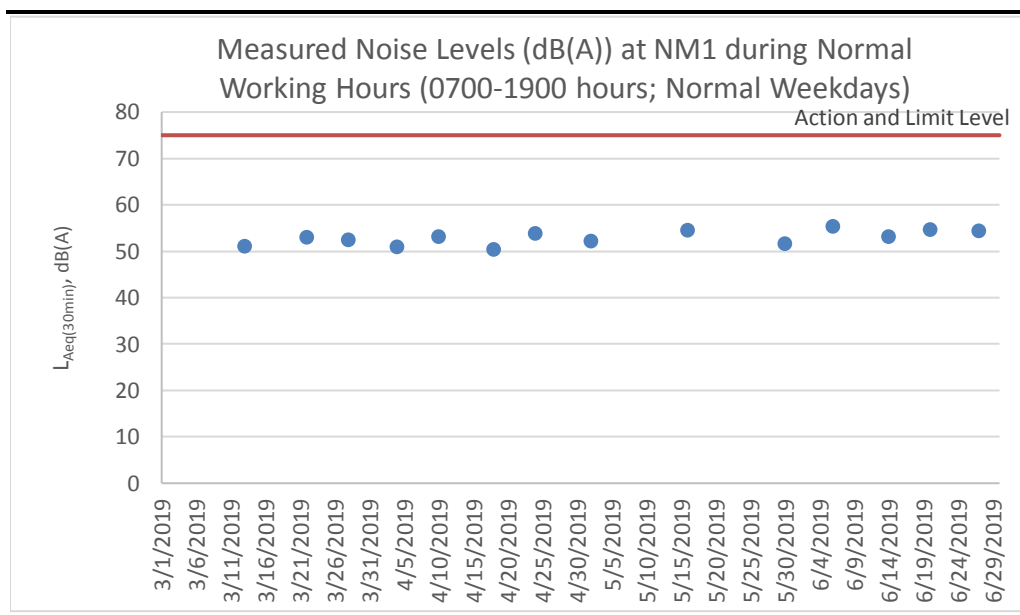
**Table E1.1 Measured Noise Levels (dB(A)) at NM1 during Normal Working Hours (0700-1900 hours; Normal Weekdays)**

Date	Start Time	Finish Time	Weather	L <sub>10</sub> (30min)	L <sub>90</sub> (30min)	L <sub>eq</sub> (30min)
4 Apr 19	14:54	15:24	Sunny	52.5	48.5	51.0
10 Apr 19	14:26	14:56	Sunny	54.0	51.0	53.2
18 Apr 19	14:36	15:06	Sunny	51.5	48.5	50.4
24 Apr 19	14:55	15:25	Sunny	55.5	52.0	53.8
2 May 19	14:31	15:01	Cloudy	53.5	49	52.2
8 May 19	NA	NA	Pouring	Monitoring was cancelled due to adverse weather.		
16 May 19	14:41	15:11	Sunny	56.0	52	54.6
23 May 19	NA	NA	Drizzle	Monitoring was cancelled due to adverse weather.		
30 May 19	16:18	16:48	Cloudy	53.0	47.5	51.6
6 Jun 19	16:07	16:37	Sunny	55.5	51.5	55.4
14 Jun 19	15:47	16:17	Sunny	67.0	49.2	53.2
20 Jun 19	15:42	16:12	Sunny	57.0	52.1	54.7
27 Jun 19	15:55	16:25	Sunny	56.3	51.3	54.4
<b>Average</b>						53.1
<b>Min</b>						50.4
<b>Max</b>						55.4

**Note:**

Correction of +3 dB(A) was made for free field measurements.

**Figure E1.1 Graphical Presentation for Noise Monitoring at NM1**



Annex E2

## Event and Action Plan for Noise Monitoring

**Annex E2**      *Event and Action Plan for Construction Noise*

Event	Action		
	ET	IEC	Contractor
<p>Action Level</p> <ul style="list-style-type: none"> <li>Identify the source(s) and investigate the cause(s) of exceedance and complaint</li> <li>Prepare Notification of Exceedance within 24 hours</li> <li>Inform Contractor, IEC and Project Proponent whether the cause of exceedance is due to the Project</li> <li>Discuss with Contractor and IEC for remedial measures required</li> <li>Ensure remedial measures are properly implemented</li> <li>Have additional monitoring if exceedance is due to the Project. If exceedance stops, cease additional monitoring</li> </ul>	<ul style="list-style-type: none"> <li>Verify the Notification of Exceedance</li> <li>Check monitoring data submitted by ET</li> <li>Discuss with ET and Contractor on proposed remedial measures</li> <li>Review proposals on remedial measures</li> <li>Audit the implementation of the remedial measures</li> <li>Audit the effectiveness of the implemented remedial measures</li> </ul>	<ul style="list-style-type: none"> <li>Submit proposals for remedial measures to IEC</li> <li>Implement the agreed proposals</li> </ul>	
<p>Limit Level</p> <ul style="list-style-type: none"> <li>Identify the source(s) and investigate the cause(s) of exceedance and complaint</li> <li>Prepare Notification of Exceedance within 24 hours</li> <li>Inform Contractor, IEC, Project Proponent and EPD whether the cause of exceedance is due to the Project</li> <li>Analyse the operation of SENTX and investigate the causes of exceedance</li> <li>Provide interim report to Contractor, IEC, Project Proponent and EPD the causes of the exceedances</li> <li>Discuss with Contractor and IEC for remedial measures required</li> <li>Ensure remedial measures are properly implemented</li> <li>Report the remedial measures implemented and the additional monitoring results to Contractor, IEC, Project Proponent and EPD</li> <li>Have additional monitoring if exceedance is due to the Project. If exceedance stops, cease additional monitoring</li> </ul>	<ul style="list-style-type: none"> <li>Verify the Notification of Exceedance</li> <li>Check monitoring data submitted by ET</li> <li>Discuss with ET and Contractor on proposed remedial measures</li> <li>Review proposals on remedial measures</li> <li>Audit the implementation of the remedial measures</li> <li>Audit the effectiveness of the implemented remedial measures</li> </ul>	<ul style="list-style-type: none"> <li>Take immediate measures to avoid further exceedance</li> <li>Submit proposals for remedial measures to IEC within 3 working days of notification</li> <li>Implement the agreed proposals</li> <li>Resubmit proposals if problem still not under control</li> <li>Stop the relevant activity of works as determined by the Project Proponent until the exceedance is abated</li> </ul>	

Annex F

## Surface Water Quality

Annex F1

## Surface Water Quality Monitoring Results

**Table F1.1 Surface Water Quality Monitoring Results at DP3**

Date	Time	Weather Condition	Water Appearance	Water Condition	Water Temperature (°C)	Dissolved Oxygen (DO) (mg/L)	pH	Suspended Solids (SS) (mg/L)	Remarks
4 Apr 19	14:11	Sunny		Unable to collect water sample due to insufficient flow					-
10 Apr 19	14:02	Sunny		Unable to collect water sample due to insufficient flow					-
18 Apr 19	14:12	Sunny		Unable to collect water sample due to insufficient flow					-
24 Apr 19	14:29	Sunny		Unable to collect water sample due to insufficient flow					-
2 May 19	14:04	Cloudy		Unable to collect water sample due to insufficient flow					-
8 May 19	14:16	Rainy	Light yellow	Semi-clear	21.2	8.74	8.41	30.8	-
8 May 19	14:25	Rainy	Light yellow	Semi-clear	21.3	8.76	8.33	32.9	DP3 (Duplicate)
16 May 19	14:17	Sunny		Unable to collect water sample due to insufficient flow					-
23 May 19	14:39	Rainy	Brown	Turbid	24.3	8.59	9.96	858.0	-
23 May 19	14:39	Rainy	Brown	Turbid	24.3	8.54	9.98	-	DP3 (Remeasurement)
23 May 19	15:02	Rainy	Brown	Turbid	24.4	8.52	9.78	838.0	DP3 (Duplicate)
23 May 19	15:02	Rainy	Brown	Turbid	24.4	8.52	9.79	-	DP3 (Duplicate) (Remeasurement)
30 May 19	14:42	Overcast	Light yellow	Semi-clear	24.5	8.32	8.39	44.5	-
30 May 19	14:57	Overcast	Light yellow	Semi-clear	24.7	8.29	8.24	44.2	DP3 (Duplicate)
6 Jun 19	14:48	Sunny	Light yellow	Semi-clear	29.0	7.85	7.30	13.8	-
6 Jun 19	15:01	Sunny	Light yellow	Semi-clear	29.1	7.81	6.50	13.9	DP3 (Duplicate)
14 Jun 19	14:37	Sunny	Light yellow	Clear	29.6	7.38	8.22	6.7	-
14 Jun 19	14:47	Sunny	Light yellow	Clear	30.1	6.79	8.29	7.4	DP3 (Duplicate)
20 Jun 19	14:38	Sunny	Light yellow	Semi-clear	29.6	6.42	8.35	76.0	-
20 Jun 19	14:47	Sunny	Light yellow	Semi-clear	29.8	6.81	8.38	74.1	DP3 (Duplicate)
27 Jun 19	14:29	Sunny	Light yellow	Clear	29.5	6.96	8.00	8.9	-
27 Jun 19	14:38	Sunny	Light yellow	Clear	29.6	6.89	8.00	8.7	DP3 (Duplicate)
					<b>Average</b>	7.82	8.50	147.0	-
					<b>Min</b>	6.42	6.50	6.7	-
					<b>Max</b>	8.76	9.98	858.0	-

**Table F1.2 Surface Water Quality Monitoring Results at DP4**

Date	Time	Weather Condition	Water Appearance	Water Condition	Water Temperature (°C)	Dissolved Oxygen (DO) (mg/L)	pH	Suspended Solids (SS) (mg/L)	Remarks
4 Apr 19	14:13	Sunny		Unable to collect water sample due to insufficient flow					-
10 Apr 19	14:05	Sunny		Unable to collect water sample due to insufficient flow					-
18 Apr 19	14:15	Sunny		Unable to collect water sample due to insufficient flow					-
24 Apr 19	14:33	Sunny		Unable to collect water sample due to insufficient flow					-
2 May 19	14:08	Cloudy		Unable to collect water sample due to insufficient flow					-
8 May 19	14:51	Rainy	Light yellow	Semi-clear	21.5	8.84	8.33	1.2	-
16 May 19	14:30	Sunny		Unable to collect water sample due to insufficient flow					-
23 May 19	15:55	Rainy	Yellow	Turbid	24.9	7.48	10.92	191.0	-
23 May 19	15:55	Rainy	Yellow	Turbid	24.9	7.42	10.80	-	DP4 (Future, temporary) (Remeasurement)
30 May 19	15:48	Overcast	Light yellow	Semi-clear	26.1	7.59	8.84	32.2	-
30 May 19	15:48	Overcast	Light yellow	Semi-clear	26.1	7.60	8.90	-	DP4 (Future, temporary) (Remeasurement)
6 Jun 19	15:39	Sunny	Light yellow	Turbid	33.0	5.19	6.90	125.0	-
6 Jun 19	15:39	Sunny	Light yellow	Turbid	33.1	5.12	6.90	-	DP4 (Future, temporary) (Remeasurement)
14 Jun 19	15:26	Sunny	Yellow	Turbid	31.7	6.02	8.38	62.2	-
20 Jun 19	15:15	Sunny	Light green	Semi-clear	32.0	6.71	9.37	19.6	-
20 Jun 19	15:15	Sunny	Light green	Semi-clear	32.0	6.70	9.37	-	DP4 (Future, temporary) (Remeasurement)
27 Jun 19	15:14	Sunny	Light green	Semi-clear	33.7	5.28	8.75	29.2	-
27 Jun 19	15:14	Sunny	Light green	Semi-clear	33.6	5.45	8.75	-	DP4 (Future, temporary) (Remeasurement)
					<b>Average</b>	6.62	8.85	65.8	-
					<b>Min</b>	5.12	6.90	1.2	-
					<b>Max</b>	8.84	10.92	191.0	-

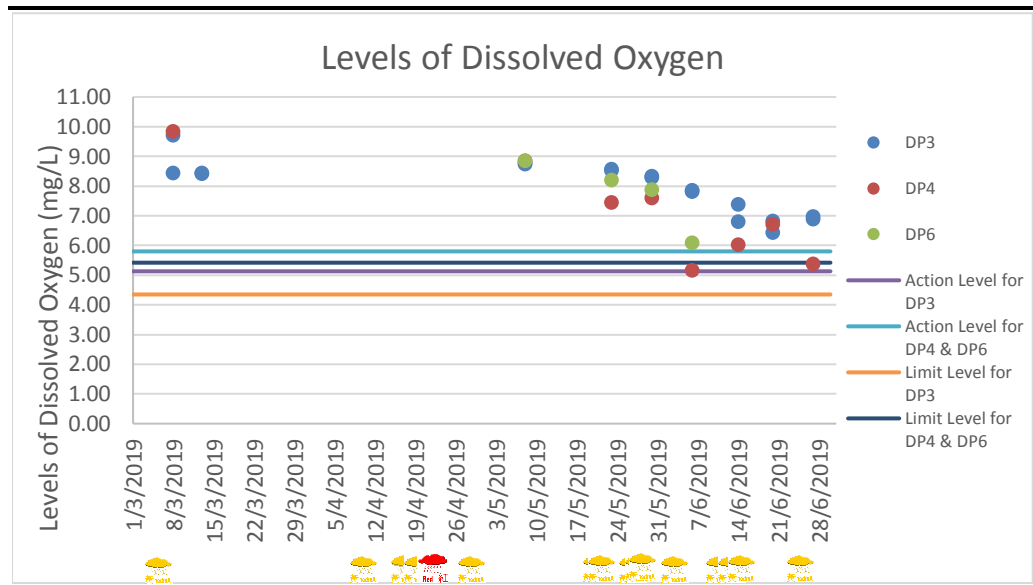
Notes: DP4 was temporary relocated to DP4 (Future, temporary) (i.e. DP4T) as an interim discharge point from the monitoring event on 16 May 2019.

**Table F1.3 Surface Water Quality Monitoring Results at DP6**

Date	Time	Weather Condition	Water Appearance	Water Condition	Water Temperature (°C)	Dissolved Oxygen (DO) (mg/L)	pH	Suspended Solids (SS) (mg/L)	Remarks
4 Apr 19	14:19	Sunny		Unable to collect water sample due to insufficient flow					-
10 Apr 19	14:12	Sunny		Unable to collect water sample due to insufficient flow					-
18 Apr 19	14:22	Sunny		Unable to collect water sample due to insufficient flow					-
24 Apr 19	14:39	Sunny		Unable to collect water sample due to insufficient flow					-
2 May 19	14:16	Cloudy		Unable to collect water sample due to insufficient flow					-
8 May 19	15:20	Rainy	Light yellow	Semi-clear	20.4	8.90	9.24	70.8	-
8 May 19	15:20	Rainy	Light yellow	Semi-clear	20.4	8.80	9.29	-	DP6 (Remeasurement)
16 May 19	14:23	Sunny		Unable to collect water sample due to insufficient flow					-
23 May 19	15:33	Rainy	Brown	Turbid	24.7	8.21	9.65	696.0	-
23 May 19	15:33	Rainy	Brown	Turbid	24.7	8.18	9.60	-	DP6 (Remeasurement)
30 May 19	15:19	Overcast	Light yellow	Semi-clear	25.4	7.89	8.68	244.0	-
30 May 19	15:19	Overcast	Light yellow	Semi-clear	25.3	7.85	8.71	-	DP6 (Remeasurement)
6 Jun 19	15:19	Sunny	Light yellow	Turbid	32.5	6.09	6.90	473.0	-
14 Jun 19	15:07	Sunny		Water sample was not collected due to negative flow					-
20 Jun 19	15:03	Sunny		Unable to collect water sample due to insufficient flow					-
27 Jun 19	14:55	Sunny		Unable to collect water sample due to insufficient flow					-
					<b>Average</b>	7.99	8.87	371.0	-
					<b>Min</b>	6.09	6.90	70.8	-
					<b>Max</b>	8.90	9.65	696.0	-

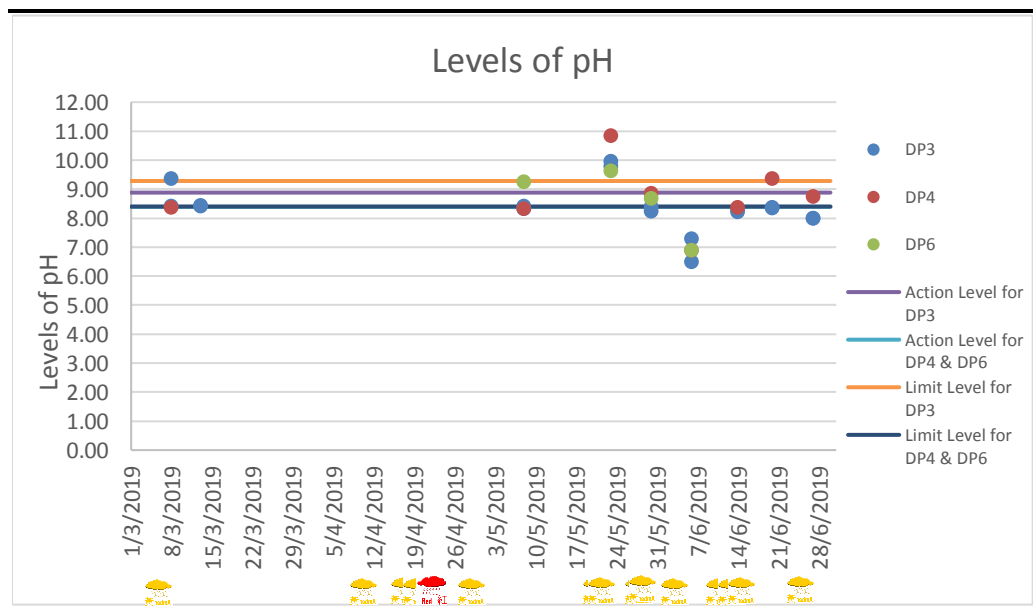


Figure F1.1 Graphical Presentation for Surface Water Quality Monitoring (DO)



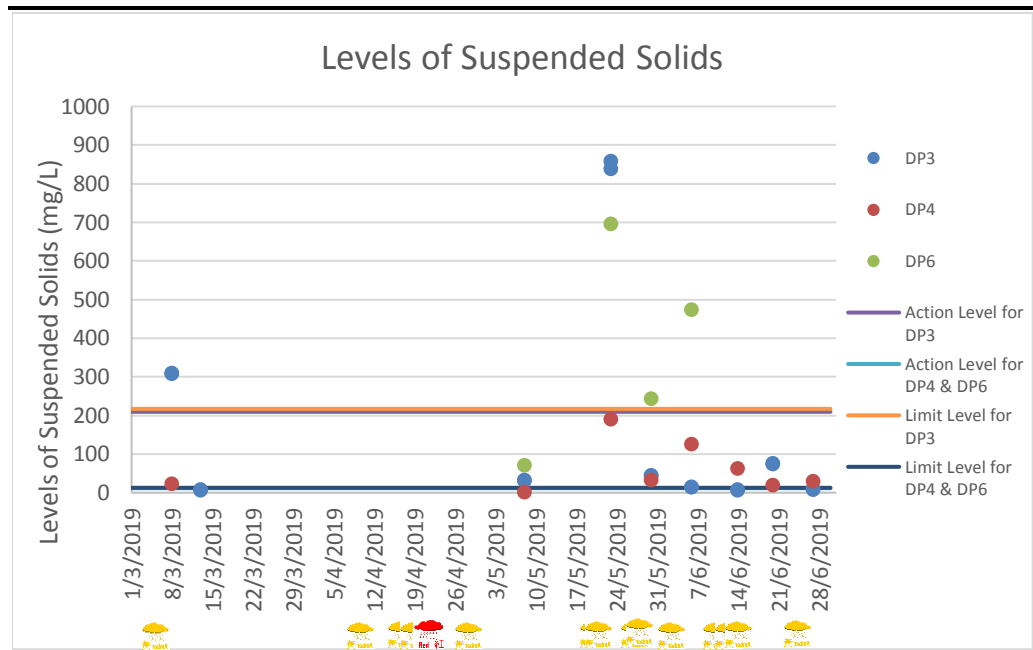
Note: Amber rainstorm warning signal was issued by the Hong Kong Observatory on 6 March, 11 April, 18 April, 19 April, 20 April, 27 April, 20 May, 21 May, 26 May, 27 May, 28 May, 1 June, 4 June, 11 June, 13 June, 14 June and 25 June 2019. Red rainstorm warning signal was issued by the Hong Kong Observatory on 20 April 2019.

Figure F1.2 Graphical Presentation for Surface Water Quality Monitoring (pH)



Note: Amber rainstorm warning signal was issued by the Hong Kong Observatory on 6 March, 11 April, 18 April, 19 April, 20 April, 27 April, 20 May, 21 May, 26 May, 27 May, 28 May, 1 June, 4 June, 11 June, 13 June, 14 June and 25 June 2019. Red rainstorm warning signal was issued by the Hong Kong Observatory on 20 April 2019.

Figure F1.3 Graphical Presentation for Surface Water Quality Monitoring (SS)



Note: Amber rainstorm warning signal was issued by the Hong Kong Observatory on 6 March, 11 April, 18 April, 19 April, 20 April, 27 April, 20 May, 21 May, 26 May, 27 May, 28 May, 1 June, 4 June, 11 June, 13 June, 14 June and 25 June 2019. Red rainstorm warning signal was issued by the Hong Kong Observatory on 20 April 2019.

Annex F2

# Event and Action Plan for Surface Water Quality Monitoring

**Annex F2**      **Event and Action Plan for Surface Water Quality During Construction Phase**

Event	Action		
	ET	IEC	Contractor
Action Level being exceeded by one sampling day	<ul style="list-style-type: none"> <li>Repeat <i>in situ</i> measurement to confirm findings</li> <li>Identify the source(s) and investigate the cause(s) of exceedance</li> <li>Prepare Notification of Exceedance within 24 hours</li> <li>Inform Contractor, IEC and Project Proponent whether the cause of exceedance is due to the Project</li> <li>Repeat measurement on the next day of exceedance if exceedance is due to the Project</li> </ul>	<ul style="list-style-type: none"> <li>Verify the Notification of Exceedance</li> <li>Check monitoring data submitted by ET</li> <li>Check Contractor's working methods</li> </ul>	<ul style="list-style-type: none"> <li>Rectify any unacceptable practice</li> <li>Amend working methods if appropriate</li> </ul>
Action Level being exceeded by two consecutive sampling days	<ul style="list-style-type: none"> <li>Repeat <i>in situ</i> measurement to confirm findings</li> <li>Identify the source(s) and investigate the cause(s) of exceedance</li> <li>Prepare Notification of Exceedance within 24 hours</li> <li>Inform Contractor, IEC and Project Proponent whether the cause of exceedance is due to the Project</li> <li>Discuss with Contractor and IEC for remedial measures required</li> <li>Ensure remedial measures are properly implemented</li> <li>Increase the monitoring frequency to daily if exceedance is due to the Project and continue until no exceedance of Action Level</li> </ul>	<ul style="list-style-type: none"> <li>Verify the Notification of Exceedance</li> <li>Check monitoring data submitted by ET</li> <li>Check Contractor's working methods</li> <li>Discuss with ET Leader and Contractor on proposed remedial measures</li> <li>Review proposals on remedial measures</li> <li>Audit the implementation of the remedial measures</li> <li>Audit the effectiveness of the implemented remedial measures</li> </ul>	<ul style="list-style-type: none"> <li>Submit proposals for remedial measures to IEC</li> <li>Implement the agreed proposals</li> <li>Amend proposal if appropriate</li> </ul>

Event	Action		
	ET	IEC	Contractor
Limit Level being exceeded by two consecutive sampling days	<ul style="list-style-type: none"> <li>Repeat <i>in situ</i> measurement to confirm findings</li> <li>Identify source(s) of impact and cause(s) of exceedance</li> <li>Prepare the Notification of Exceedance within 24 hours</li> <li>Inform Contractor, IEC, Project Proponent and EPD whether the cause of exceedance is due to the Project</li> <li>Discuss with Contractor and IEC for remedial measures required</li> <li>Ensure remedial measures are properly implemented</li> <li>Increase the monitoring frequency to daily if exceedance is due to the Project until no exceedance of Limit Level</li> </ul>	<ul style="list-style-type: none"> <li>Verify the Notification of Exceedance</li> <li>Check monitoring data submitted by ET</li> <li>Check Contractor's working methods</li> <li>Discuss with ET and Contractor on proposed remedial measures</li> <li>Review proposals on remedial measures</li> <li>Audit the implementation of the remedial measures</li> <li>Audit the effectiveness of the implemented remedial measures</li> </ul>	<ul style="list-style-type: none"> <li>Critically review the working methods</li> <li>Rectify unacceptable practice</li> <li>Check all plant and equipment</li> <li>Consider changes of working methods</li> <li>Discuss with the ET and IEC and propose mitigation measures to the IEC</li> <li>Implement the agreed mitigation measures</li> </ul>
Limit Level being exceeded by more than two consecutive sampling days	<ul style="list-style-type: none"> <li>Repeat <i>in situ</i> measurement to confirm findings</li> <li>Identify source(s) of impact and cause(s) of exceedance</li> <li>Prepare the Notification of Exceedance within 24 hours</li> <li>Inform Contractor, IEC, Project Proponent and EPD whether the cause of exceedance is due to the Project</li> <li>Check monitoring data, all plant, equipment and Contractor's working methods</li> <li>Discuss with Contractor and IEC for remedial measures required</li> <li>Ensure mitigation measures are implemented</li> <li>Increase the monitoring frequency to daily if exceedance is due to the Project until no exceedance of Limit Level for two consecutive days</li> </ul>	<ul style="list-style-type: none"> <li>Verify the Notification of Exceedance</li> <li>Check monitoring data submitted by ET</li> <li>Check Contractor's working methods</li> <li>Discuss with ET and Contractor on proposed remedial measures</li> <li>Review proposals on remedial measures</li> <li>Audit the implementation of the remedial measures</li> <li>Audit the effectiveness of the implemented remedial measures</li> </ul>	<ul style="list-style-type: none"> <li>Critically review the working methods</li> <li>Rectify unacceptable practice</li> <li>Check all plant and equipment</li> <li>Consider changes of working methods</li> <li>Discuss with the ET and IEC and propose mitigation measures</li> <li>Implement the agreed mitigation measures</li> <li>As directed by the Project Proponent, slow down or stop all or part of the construction activities</li> </ul>

Annex F3

Investigation Reports of  
Environmental Quality  
Limit Exceedance

## Investigation Report of Environmental Quality Limit Exceedance

Project	South East New Territories (SENT) Landfill Extension
Date	8 May 2019
Time	15:20
Monitoring Location	DP6
Parameter	Surface Water (pH)
Action / Limit Levels	Action level: >8.39 Limit level: >9.40
Measured Level	DP6: 9.24 & 9.29
Possible reason	<p>According to the site record on 8 May 2019 provided by the Contractor, concrete for bar bending yield, which might be a potential source of pH increase, and excavation for temporary drainage channel near DP6 channel were carried out in the vicinity of DP6. However, during the sampling event, no construction works in the vicinity of DP6 and no potential surface water discharge or overflow to DP6 channel were observed. A temporary trench and berm were constructed along the DP6 channel to collect the surface runoff which was further treated by the Wetsep prior to discharge. Wetsep near DP6 was functioning properly with reference to the Wetsep operation record on 8 May 2019. The Contractor has complied with the recommendations and conditions outlined in the updated EM&amp;A Manual.</p> <p>In addition, part of the DP6 channel was relocated to hill side and the construction of this part of DP6 channel was completed on 15 April 2019. The concrete of the relocated DP6 channel should have been well settled on the sampling day which shall not be the potential source leading to the increase of pH of the surface water.</p> <p>Based on the above, there is no adequate evidence showing that the pH exceedance at DP6 was deemed to Project-related activities. The exceedance might be caused by other influencing factors from the upstream areas.</p> <p>The nearest weekly site inspection was carried out on 9 May 2019 to audit the site practices and mitigation measures, where applicable mitigation measures on surface water quality were found implemented yet with deficiencies. The Contractor was reminded to review the drainage system near DP6 to avoid accumulation of stagnant water and ensure the Wetsep is functioning at all times.</p>
Action Taken / Action to be Taken	Examination of environmental performance of the Project will be continued during the weekly inspections. The Contractor is reminded to implement relevant and appropriate mitigation measures according to the updated EM&A Manual to avoid any exceedance of the Action and Limit Level.

	In addition, the Contractor shall review (i) the efficiency, treatment capacity and the number of the Wetsep at DP6, and (ii) the drainage system of the whole site to avoid potential direct discharge or overflow of site water to DP6 channel.
Remarks	-

Prepared by: Abbey Lau  
Designation: Environmental Team  
Date: 5 June 2019



## Investigation Report of Environmental Quality Limit Exceedance

Project	South East New Territories (SENT) Landfill Extension
Date	8 May 2019
Time	15:20
Monitoring Location	DP6
Parameter	Surface Water (Suspended Solids (SS))
Action / Limit Levels	Action level: >11.7 mg/L Limit level: >12.7 mg/L
Measured Level	DP6: 70.8 mg/L
Possible reason	<p>According to the site record on 8 May 2019 provided by the Contractor, concrete for bar bending yield and excavation for temporary drainage channel near DP6 channel, which might be a potential source of SS increase, were carried out in the vicinity of DP6. However, during the sampling event, no construction works in the vicinity of DP6 and no potential surface water discharge or overflow to DP6 channel were observed. A temporary trench and berm were constructed along the DP6 channel to collect the surface runoff which was further treated by the Wetsep prior to discharge. Wetsep near DP6 was functioning properly with reference to the Wetsep operation record on 8 May 2019. The Contractor has complied with the recommendations and conditions outlined in the updated EM&amp;A Manual.</p> <p>Based on the above, there is no adequate evidence showing that the SS exceedance at DP6 was deemed to Project-related activities. The exceedance might be caused by other influencing factors from the upstream areas (e.g. Clearwater Bay Country Park).</p> <p>The nearest weekly site inspection was carried out on 9 May 2019 to audit the site practices and mitigation measures, where applicable mitigation measures on surface water quality were found implemented yet with deficiencies. The Contractor was reminded to review the drainage system near DP6 to avoid accumulation of stagnant water and ensure the silt removal facility is functioning at all times.</p>
Action Taken / Action to be Taken	<p>Examination of environmental performance of the Project will be continued during the weekly inspections. The Contractor is reminded to implement relevant and appropriate mitigation measures according to the updated EM&amp;A Manual to avoid any exceedance of the Action and Limit Level.</p> <p>In addition, the Contractor shall review (i) the efficiency, treatment capacity and the number of the Wetsep at DP6, and (ii) the drainage system of the whole site to avoid potential direct discharge or overflow of site water to DP6 channel. The</p>

	Contractor shall also review the design of the DP6 channel near the hillside (e.g. maintain sufficient set back from the site boundary and proper trapezoidal channel structure) to minimize the potential surface runoff to DP6 channel from the Country Park.
Remarks	-

Prepared by: Abbey Lau  
 Designation: Environmental Team  
 Date: 5 June 2019

## Investigation Report of Environmental Quality Limit Exceedance

Project	South East New Territories (SENT) Landfill Extension
Date	23 May 2019
Time	DP3: 14:39 and 15:02 (Duplicate) DP4T: 15:55 DP6: 15:35
Monitoring Location	DP3, DP4T and DP6
Parameter	Surface Water (pH)
Action / Limit Levels	DP3: Action level: >8.88 Limit level: >9.28 DP4T and DP6: Action level: >8.39 Limit level: >8.40
Measured Level	DP3: 9.96 & 9.98 DP3 (Duplicate): 9.78 & 9.79 DP4T: 10.92 & 10.80 DP6: 9.65 & 9.60
Possible reason	<p>DP3: No construction works were carried out at the SENT Landfill restored area (i.e. catchment of DP3 within the Project boundary) and in the vicinity of DP3 with reference to the site record on 23 May 2019. The absence of works might suggest that the pH exceedance at DP3 is deemed to activities that are not related to the Project. The exceedance might be caused by other influencing factors from the upstream areas (e.g. existing SENT Landfill and Clearwater Bay Country Park).</p> <p>DP4T: Concreting work was observed being carried out at the sedimentation trap area, which might be a potential source of pH increase. The concrete at the sedimentation trap area may not be well settled and washed off on the sampling day due to the rainy weather which might be a potential source leading to the increase of pH of the surface water. The surface water at the sedimentation trap area was observed to be further pumped to a pit at Cell 1 and discharged to the DP4T channel. The water was not treated by the Wetsep prior to discharge to the DP4T.</p> <p>Based on the above, the pH exceedance at DP4T was deemed to Project-related activities.</p> <p>DP6: According to the site record on 23 May 2019 provided by the Contractor, the works in the vicinity of DP6 channel included filling up at western perimeter bund and stockpile at Cell 1X, erection of formwork and repair of footing at GVL building &amp;</p>

	<p>leachate treatment plant areas, which were not potential sources of pH increase. During the sampling event, no construction works in the vicinity of DP6 was observed.</p> <p>Besides, weekly site inspection was carried out in the morning of the same day of sampling event to audit the site practices and mitigation measures, where applicable mitigation measures on surface water quality were found implemented. Yet during the sampling event (occurred after the rainfall), it was observed that not all surface runoff discharged to the channel leading to DP6 was treated by the Wetsep due to insufficient capacity of the Wetsep near DP6. The Contractor was reminded to review the treatment capacity and the number of the Wetsep at DP6.</p> <p>Since there was no potential source leading to pH increase from the Project-related activities and with applicable mitigation measures implemented, there is no adequate evidence showing that the pH exceedance at DP6 was deemed to Project-related activities. The exceedance might be caused by other influencing factors.</p>
Action Taken / Action to be Taken	<p>Examination of environmental performance of the Project will be continued during the weekly inspections. The Contractor is reminded to implement relevant and appropriate mitigation measures according to the updated EM&amp;A Manual to avoid any exceedance of the Action and Limit Level.</p> <p>In addition, the Contractor shall review (i) the drainage system of the whole site to avoid potential direct discharge or overflow of contaminated surface water runoff to DP4T channel, and (ii) the treatment capacity and the number of the Wetsep at DP6.</p>
Remarks	-

Prepared by: Abbey Lau  
Designation: Environmental Team  
Date: 12 June 2019

## Investigation Report of Environmental Quality Limit Exceedance

Project	South East New Territories (SENT) Landfill Extension
Date	23 May 2019
Time	DP3: 14:39 and 15:02 (Duplicate) DP4T: 15:55 DP6: 15:35
Monitoring Location	DP3, DP4T and DP6
Parameter	Surface Water (Suspended Solids (SS))
Action / Limit Levels	DP3: Action level: >209.3 mg/L Limit level: >217.0 mg/L DP4T and DP6: Action level: >11.7 mg/L Limit level: >12.7 mg/L
Measured Level	DP3: 858 mg/L DP3 (Duplicate): 838 mg/L DP4T: 191 mg/L DP6: 696 mg/L
Possible reason	<p>DP3: No construction works were carried out at the SENT Landfill restored area (i.e. catchment of DP3 within the Project boundary) and in the vicinity of DP3 with reference to the site record on 23 May 2019. The absence of works might suggest that the SS exceedance at DP3 is deemed to activities that are not related to the Project. The exceedance might be caused by other influencing factors from the upstream areas (e.g. existing SENT Landfill and Clearwater Bay Country Park).</p> <p>DP4T: During the weekly site inspection in the morning, muddy water was observed at the sedimentation trap area which was pumped to a pit at Cell 1 and further discharged to the DP4T channel. The water was not treated by the Wetsep prior to discharge. This is a potential source of SS to the surface water at DP4T.</p> <p>Based on the above, the SS exceedance at DP4T was deemed to Project-related activities.</p> <p>DP6: During the sampling event, no construction works in the vicinity of DP6 was observed.</p> <p>However, two stockpiles of dusty materials was observed to be placed at the hill side of the DP6 channel and exposed soil was observed next to the DP6 channel (not being covered by impermeable sheet or the runoff in the area will pass through any silt trap). These are the potential sources of SS increase in the</p>

	<p>surface water.</p> <p>Besides, during the sampling event (occurred after the rainfall), it was observed that not all muddy surface runoff discharged to the channel leading to DP6 was treated by the Wetsep due to insufficient capacity of the Wetsep near DP6.</p> <p>Based on the above, the SS exceedance at DP6 was deemed to Project-related activities.</p>
Action Taken / Action to be Taken	<p>Examination of environmental performance of the Project will be continued during the weekly inspections. The Contractor is reminded to implement relevant and appropriate mitigation measures according to the updated EM&amp;A Manual to avoid any exceedance of the Action and Limit Level.</p> <p>In addition, the Contractor shall (i) remove/cover the stockpiles of dusty materials and exposed soil areas near DP6, (ii) review the treatment capacity and the number of the Wetsep at DP6, and (iii) review the drainage system of the whole site to avoid potential direct discharge or overflow of muddy surface runoff to DP4T and DP6 channels.</p>
Remarks	-

Prepared by: Abbey Lau  
Designation: Environmental Team  
Date: 12 June 2019

## Investigation Report of Environmental Quality Limit Exceedance

Project	South East New Territories (SENT) Landfill Extension
Date	6 June 2019
Time	DP4T: 15:39
Monitoring Location	DP4T
Parameter	Surface Water (Dissolved Oxygen (DO))
Action / Limit Levels	DP4T: Action level: <5.80 mg/L Limit level: <5.42 mg/L
Measured Level	DP4T: 5.19 mg/L & 5.12 mg/L
Possible reason	<p>During the sampling event, the water level was observed to be above the weir plate for sampling. As there was flow of water from upstream to downstream, it was agreed on-site with IEC and GVL representatives that water monitoring and sampling should be carried out.</p> <p>From the on-site rainfall record of June 2019, heavy rainfall event was recorded on 4 June 2019. Amber rainstorm warning signal was also issued by the Hong Kong Observatory on 4 June 2019 before the sampling event on 6 June 2019. Site staff of the Contractor reported that during the event, backflow of muddy water from downstream well passed DP4T along the channel. The site rainfall record showed that there was little rainfall on 6 June 2019. It is therefore a high possibility that the high level of water observed at DP4T was due to backflow water from the TKO Fill Bank. The sample taken at DP4T on the day might not represent the surface water runoff from SENTX and further upstream.</p> <p>In addition, after checking the site record of 6 June 2019 provided by the Contractor, the works in the vicinity of surface water channel leading to DP4T included erecting formwork, concreting works for Culvert X9 and rebar fixing at sediment trap, which are not potential sources of DO decrease.</p> <p>Due to presence of the influencing factor from the downstream and no potential source leading to DO decrease from the Project-related activities, there is no adequate evidence showing that the DO exceedance at DP4T was deemed to Project-related activities.</p>
Action Taken / Action to be Taken	<p>Examination of environmental performance of the Project will be continued during the weekly inspections. The Contractor is reminded to implement relevant and appropriate mitigation measures according to the updated EM&amp;A Manual to avoid any exceedance of the Action and Limit Level.</p> <p>In addition, the Contractor shall review (i) review the drainage system of the site and discuss the drainage issues of the TKO Fill</p>

	Bank with CEDD so that there will be no backflow of surface water runoff from TKO Fill Bank to the SENTX boundary.
Remarks	-

Prepared by: Abbey Lau  
Designation: Environmental Team  
Date: 26 June 2019



## Investigation Report of Environmental Quality Limit Exceedance

Project	South East New Territories (SENT) Landfill Extension
Date	6 June 2019
Time	DP4T: 15:39 DP6: 15:19
Monitoring Location	DP4T and DP6
Parameter	Surface Water (Suspended Solids (SS))
Action / Limit Levels	DP4T and DP6: Action level: >11.7 mg/L Limit level: >12.7 mg/L
Measured Level	DP4T: 125 mg/L DP6: 473 mg/L
Possible reason	<p>DP4T:</p> <p>During the sampling event, the water level was observed to be above the weir plate for sampling. As there was flow of water from upstream to downstream, it was agreed on-site with IEC and GVL representatives that water monitoring and sampling should be carried out.</p> <p>From the on-site rainfall record of June 2019, heavy rainfall event was recorded on 4 June 2019. Amber rainstorm warning signal was also issued by the Hong Kong Observatory on 4 June 2019 before the sampling event on 6 June 2019. Site staff of the Contractor reported that during the event, backflow of muddy water from downstream well passed DP4T along the channel. The site rainfall record showed that there was little rainfall on 6 June 2019. It is therefore a high possibility that the high level of water observed at DP4T was due to backflow water from the TKO Fill Bank. The sample taken at DP4T on the day might not represent the surface water runoff from SENTX and further upstream.</p> <p>In addition, after checking the site record of 6 June 2019 provided by the Contractor, the works in the vicinity of surface water channel leading to DP4T included erecting formwork, rebar fixing and concreting works for Culvert X9 at sediment trap, which are not potential sources of SS increase.</p> <p>During the weekly site inspection in the morning of the same day of sampling event, the concrete berm along the DP4T channel was observed to be damaged and exposed soil was accumulated along the berm of the DP4T channel, which might be a potential source of SS to the surface water at DP4T.</p> <p>Due to presence of the influencing factor from the downstream, there is no adequate evidence showing that the SS exceedance at DP4T was only deemed to Project-related activities.</p>

	<p>DP6: During the sampling event, the water level was observed to be above the weir plate for sampling. As there was flow of water from upstream to downstream, it was agreed on-site with IEC and GVL representatives that water monitoring and sampling should be carried out.</p> <p>From the on-site rainfall record of June 2019, heavy rainfall event was recorded on 4 June 2019. Amber rainstorm warning signal was also issued by the Hong Kong Observatory on 4 June 2019 before the sampling event on 6 June 2019. Site staff of the Contractor reported that during the event, backflow of muddy water from downstream well passed DP6 along the channel. The site rainfall record showed that there was little rainfall on 6 June 2019. It is therefore a high possibility that the high level of water observed at DP6 was due to backflow water from the TKO Fill Bank. The sample taken at DP6 on the day might not represent the surface water runoff from SENTX and Clearwater Bay Country Park.</p> <p>Soil compaction work was observed next to the DP6 channel during the sampling event. In addition, after checking the site record of 6 June 2019 provided by the Contractor, the works in the vicinity of the channel leading to DP6 included filling up at Western Perimeter Bund at Cell 1X which is a potential source of SS increase; and lifting operation, erection of formwork and rebar fixing at leachate treatment plant areas, which are not potential sources of SS increase. The water discharged to the DP6 channel was treated by the Wetsep.</p> <p>However, environmental deficiencies were observed. During the sampling event, a stockpile of dusty materials was observed placing at the hill side of the channel leading to DP6 and exposed soil was observed next to the channel (not being covered by tarpaulin sheet or the muddy runoff in the area did pass through any silt trap). Besides, during the sampling event, it was observed that not all muddy water in the channel was treated by the Wetsep due to insufficient capacity of the Wetsep near DP6. The Contractor was reminded to remove/cover and minimize the stockpiles and exposed soil, and review the treatment capacity and the number of the Wetsep at DP6.</p> <p>Due to presence of the influencing factor from the downstream, there is no adequate evidence showing that the SS exceedance at DP6 was only deemed to Project-related activities.</p>
Action Taken / Action to be Taken	Examination of environmental performance of the Project will be continued during the weekly inspections. The Contractor is

	<p>reminded to implement relevant and appropriate mitigation measures according to the updated EM&amp;A Manual to avoid any exceedance of the Action and Limit Level.</p> <p>In addition, the Contractor shall (i) remove/cover and minimize the stockpiles and exposed soil, (ii) review the treatment capacity and the number of the Wetsep at DP6, and (iii) discuss the drainage issues of the TKO Fill Bank with CEDD so that there will be no backflow of surface water runoff from TKO Fill Bank to the SENTX boundary.</p>
Remarks	-

Prepared by: Abbey Lau  
Designation: Environmental Team  
Date: 28 June 2019

## Investigation Report of Environmental Quality Limit Exceedance

Project	South East New Territories (SENT) Landfill Extension
Date	14 June 2019
Time	DP4T: 15:26
Monitoring Location	DP4T
Parameter	Surface Water (Suspended Solids (SS))
Action / Limit Levels	DP4T: Action level: >11.7 mg/L Limit level: >12.7 mg/L
Measured Level	DP4T: 62.2 mg/L
Possible reason	<p>During the sampling event, the water level was observed to be above the weir plate for sampling. As there was flow of water from upstream to downstream, it was agreed on-site with IEC and GVL representatives that water monitoring and sampling should be carried out.</p> <p>From the on-site rainfall record of June 2019, heavy rainfall events were recorded on 10, 11 and 13 June 2019. Amber rainstorm warning signal was also issued by the Hong Kong Observatory on 13 June 2019 before the sampling event on 14 June 2019. Site staff of the Contractor reported that during the event, backflow of muddy water from downstream well passed DP4T along the channel. The site rainfall record showed that there was little rainfall on 14 June 2019. It is therefore a high possibility that the high level of water observed at DP4T was due to backflow water from the TKO Fill Bank. The sample taken at DP4T on the day might not represent the surface water runoff from SENTX and further upstream.</p> <p>However, environmental deficiencies were observed. During the sampling event, excavation work was observed next to the DP4T channel and exposed soil was observed next to the channel (not being covered by tarpaulin sheet or the muddy runoff in the area didn't pass through any silt trap), which are potential source of SS increases. During the weekly site inspection carried on 13 June 2019 morning before the sampling event, the concrete berm along the DP4T channel was observed to be damaged and exposed soil was accumulated along the berm of the DP4T channel which might be a potential source of SS to the surface water at DP4T.</p> <p>Due to presence of the influencing factor from the downstream, there is no adequate evidence showing that the SS exceedance at DP4T was only deemed to Project-related activities.</p>
Action Taken / Action to be Taken	Examination of environmental performance of the Project will be continued during the weekly inspections. The Contractor is reminded to implement relevant and appropriate mitigation

	<p>measures according to the updated EM&amp;A Manual to avoid any exceedance of the Action and Limit Level.</p> <p>In addition, the Contractor shall (i) remove/cover and minimize the stockpiles and exposed soil, and (ii) discuss the drainage issues of the TKO Fill Bank with CEDD so that there will be no backflow of surface water runoff from TKO Fill Bank to the SENTX boundary.</p>
Remarks	-

Prepared by: Abbey Lau  
 Designation: Environmental Team  
 Date: 28 June 2019

## Investigation Report of Environmental Quality Limit Exceedance

Project	South East New Territories (SENT) Landfill Extension
Date	20 June 2019
Time	DP4T: 15:15
Monitoring Location	DP4T
Parameter	Surface Water (pH)
Action / Limit Levels	DP4T: Action level: <8.39 Limit level: <8.40
Measured Level	DP4T: 9.37 & 9.37
Possible reason	<p>During the sampling event, the water level was observed to be above the weir plate for sampling. As there was flow of water from upstream to downstream, it was agreed on-site with IEC and GVL representatives that water monitoring and sampling should be carried out.</p> <p>From the on-site rainfall record of June 2019, heavy rainfall events were recorded on 10, 11 and 13 June 2019. Amber rainstorm warning signal was also issued by the Hong Kong Observatory on 13 June 2019 before the sampling event on 20 June 2019. Site staff of the Contractor reported that during the event, backflow of muddy water from downstream well passed DP4T along the channel. The site rainfall record showed that there was little rainfall on 14 June to 20 June 2019. It is therefore a high possibility that the high level of water observed at DP4T during the sampling event was due to the accumulated ponding water with the previous backflow water from the TKO Fill Bank. The sample taken at DP4T on the day might not represent the surface water runoff from SENTX and further upstream.</p> <p>In addition, after checking the site record of 20 June 2019 provided by the Contractor, the works in the vicinity of surface water channel leading to DP4T included erect formwork, rebar fixing and curing and CJ cleaning at sediment trap, which are not potential sources of pH increase.</p> <p>Due to presence of the influencing factor from the downstream and no potential source leading to pH increase from the Project-related activities, there is no adequate evidence showing that the pH exceedance at DP4T was deemed to Project-related activities.</p>
Action Taken / Action to be Taken	Examination of environmental performance of the Project will be continued during the weekly inspections. The Contractor is reminded to implement relevant and appropriate mitigation measures according to the updated EM&A Manual to avoid any exceedance of the Action and Limit Level.

	In addition, the Contractor shall review the drainage system of the site and discuss the drainage issues of the TKO Fill Bank with CEDD so that there will be no backflow of surface water runoff from TKO Fill Bank to the SENTX boundary.
Remarks	-

Prepared by: Abbey Lau  
Designation: Environmental Team  
Date: 10 July 2019

## Investigation Report of Environmental Quality Limit Exceedance

Project	South East New Territories (SENT) Landfill Extension
Date	20 June 2019
Time	DP4T: 15:15
Monitoring Location	DP4T
Parameter	Surface Water (Suspended Solids (SS))
Action / Limit Levels	DP4T: Action level: >11.7 mg/L Limit level: >12.7 mg/L
Measured Level	DP4T: 19.6 mg/L
Possible reason	<p>During the sampling event, the water level was observed to be above the weir plate for sampling. As there was flow of water from upstream to downstream, it was agreed on-site with IEC and GVL representatives that water monitoring and sampling should be carried out.</p> <p>From the on-site rainfall record of June 2019, heavy rainfall events were recorded on 10, 11 and 13 June 2019. Amber rainstorm warning signal was also issued by the Hong Kong Observatory on 13 June 2019 before the sampling event on 20 June 2019. Site staff of the Contractor reported that during the event, backflow of muddy water from downstream well passed DP4T along the channel. The site rainfall record showed that there was little rainfall on 14 June to 20 June 2019. It is therefore a high possibility that the high level of water observed at DP4T during the sampling event was due to the accumulated ponding water with the previous backflow water from the TKO Fill Bank. The sample taken at DP4T on the day might not represent the surface water runoff from SENTX and further upstream.</p> <p>In addition, after checking the site record of 20 June 2019 provided by the Contractor, the works in the vicinity of surface water channel leading to DP4T included erect formwork, rebar fixing and curing and CJ cleaning at sediment trap, which are not potential sources of SS increase.</p> <p>During the weekly site inspection in the morning of the same day of sampling event, site water was observed at the sediment trap area which was pumped to a temporary holding area for retention at Cell 2 before further discharged to the DP4T channel.</p> <p>Due to presence of the influencing factor from the downstream, there is no adequate evidence showing that the SS exceedance at DP4T was only deemed to Project-related activities.</p>
Action Taken / Action to be Taken	Examination of environmental performance of the Project will be continued during the weekly inspections. The Contractor is



	<p>reminded to implement relevant and appropriate mitigation measures according to the updated EM&amp;A Manual to avoid any exceedance of the Action and Limit Level.</p> <p>In addition, the Contractor shall discuss the drainage issues of the TKO Fill Bank with CEDD so that there will be no backflow of surface water runoff from TKO Fill Bank to the SENTX boundary.</p>
Remarks	-

Prepared by: Abbey Lau  
 Designation: Environmental Team  
 Date: 10 July 2019

## Investigation Report of Environmental Quality Limit Exceedance

Project	South East New Territories (SENT) Landfill Extension
Date	27 June 2019
Time	DP4T: 15:14
Monitoring Location	DP4T
Parameter	Surface Water (Dissolved Oxygen (DO))
Action / Limit Levels	DP4T: Action level: <5.80 mg/L Limit level: <5.42 mg/L
Measured Level	DP4T: 5.28 mg/L & 5.45 mg/L
Possible reason	<p>During the sampling event, the water level was observed to be above the weir plate for sampling. As there was flow of water from upstream to downstream, it was agreed on-site with IEC and GVL representatives that water monitoring and sampling should be carried out.</p> <p>From the on-site rainfall record of June 2019, heavy rainfall event was recorded on 25 June 2019. Amber rainstorm warning signal was also issued by the Hong Kong Observatory on 25 June 2019 before the sampling event on 27 June 2019. During the event, backflow of muddy water from downstream might well passed DP4T along the channel. The site rainfall record showed that there was little rainfall on 27 June 2019. It is therefore a high possibility that the high level of water observed at DP4T was due to backflow water from the TKO Fill Bank. The sample taken at DP4T on the day might not represent the surface water runoff from SENTX and further upstream.</p> <p>In addition, no works which may lead to potential DO decrease was conducted in the vicinity of surface water channel leading to DP4T on and before the sampling day based on on-site observations and construction activities described by the Contractor. During the sampling event, no potential surface water discharge or overflow to the DP4T channel was observed.</p> <p>Due to presence of the influencing factor from the downstream and no potential source leading to DO decrease from the Project-related activities, there is no adequate evidence showing that the DO exceedance at DP4T was deemed to Project-related activities.</p>
Action Taken / Action to be Taken	<p>Examination of environmental performance of the Project will be continued during the weekly inspections. The Contractor is reminded to implement relevant and appropriate mitigation measures according to the updated EM&amp;A Manual to avoid any exceedance of the Action and Limit Level.</p> <p>In addition, the Contractor shall review the drainage system of the</p>

	site and discuss the drainage issues of the TKO Fill Bank with CEDD so that there will be no backflow of surface water runoff from TKO Fill Bank to the SENTX boundary.
Remarks	-

Prepared by: Abbey Lau  
Designation: Environmental Team  
Date: 28 June 2019

## Investigation Report of Environmental Quality Limit Exceedance

Project	South East New Territories (SENT) Landfill Extension
Date	27 June 2019
Time	DP4T: 15:14
Monitoring Location	DP4T
Parameter	Surface Water (pH)
Action / Limit Levels	DP4T: Action level: >8.39 Limit level: >8.40
Measured Level	DP4T: 8.75 & 8.75
Possible reason	<p>During the sampling event, the water level was observed to be above the weir plate for sampling. As there was flow of water from upstream to downstream, it was agreed on-site with IEC and GVL representatives that water monitoring and sampling should be carried out.</p> <p>From the on-site rainfall record of June 2019, heavy rainfall event was recorded on 25 June 2019. Amber rainstorm warning signal was also issued by the Hong Kong Observatory on 25 June 2019 before the sampling event on 27 June 2019. During the event, backflow of muddy water from downstream might well passed DP4T along the channel. The site rainfall record showed that there was little rainfall on 27 June 2019. It is therefore a high possibility that the high level of water observed at DP4T was due to backflow water from the TKO Fill Bank. The sample taken at DP4T on the day might not represent the surface water runoff from SENTX and further upstream.</p> <p>In addition, no works which may lead to potential pH increase (e.g. concreting works) was conducted in the vicinity of surface water channel leading to DP4T on and before the sampling day based on on-site observations and construction activities described by the Contractor. During the sampling event, no potential surface water discharge or overflow to the DP4T channel was observed.</p> <p>Due to presence of the influencing factor from the downstream and no potential source leading to pH increase from the Project-related activities, there is no adequate evidence showing that the pH exceedance at DP4T was deemed to Project-related activities.</p>
Action Taken / Action to be Taken	<p>Examination of environmental performance of the Project will be continued during the weekly inspections. The Contractor is reminded to implement relevant and appropriate mitigation measures according to the updated EM&amp;A Manual to avoid any exceedance of the Action and Limit Level.</p> <p>In addition, the Contractor shall review the drainage system of the</p>

	site and discuss the drainage issues of the TKO Fill Bank with CEDD so that there will be no backflow of surface water runoff from TKO Fill Bank to the SENTX boundary.
Remarks	-

Prepared by: Abbey Lau  
Designation: Environmental Team  
Date: 28 June 2019

## Investigation Report of Environmental Quality Limit Exceedance

Project	South East New Territories (SENT) Landfill Extension
Date	27 June 2019
Time	DP4T: 15:14
Monitoring Location	DP4T
Parameter	Surface Water (Suspended Solids (SS))
Action / Limit Levels	DP4T: Action level: >11.7 mg/L Limit level: >12.7 mg/L
Measured Level	DP4T: 29.2 mg/L
Possible reason	<p>During the sampling event, the water level was observed to be above the weir plate for sampling. As there was flow of water from upstream to downstream, it was agreed on-site with IEC and GVL representatives that water monitoring and sampling should be carried out.</p> <p>From the on-site rainfall record of June 2019, heavy rainfall event was recorded on 25 June 2019. Amber rainstorm warning signal was also issued by the Hong Kong Observatory on 25 June 2019 before the sampling event on 27 June 2019. During the event, backflow of muddy water from downstream might well passed DP4T along the channel. The site rainfall record showed that there was little rainfall on 27 June 2019. It is therefore a high possibility that the high level of water observed at DP4T was due to backflow water from the TKO Fill Bank. The sample taken at DP4T on the day might not represent the surface water runoff from SENTX and further upstream.</p> <p>In addition, no works which may lead to potential SS increase was conducted in the vicinity of surface water channel leading to DP4T on the sampling day based on on-site observations and construction activities described by the Contractor. During the sampling event, no potential surface water discharge or overflow to the DP4T channel was observed.</p> <p>Due to presence of the influencing factor from the downstream and no potential source leading to SS increase from the Project-related activities, there is no adequate evidence showing that the SS exceedance at DP4T was deemed to Project-related activities.</p>
Action Taken / Action to be Taken	<p>Examination of environmental performance of the Project will be continued during the weekly inspections. The Contractor is reminded to implement relevant and appropriate mitigation measures according to the updated EM&amp;A Manual to avoid any exceedance of the Action and Limit Level.</p> <p>In addition, the Contractor shall review the drainage system of the</p>

	site and discuss the drainage issues of the TKO Fill Bank with CEDD so that there will be no backflow of surface water runoff from TKO Fill Bank to the SENTX boundary.
Remarks	-

Prepared by: Abbey Lau  
Designation: Environmental Team  
Date: 8 July 2019

Annex G

Cumulative Statistics on  
Exceedances,  
Environmental Complaints,  
Notification of Summons  
and Status of Prosecutions



**Table G1** *Cumulative Statistics on Exceedances*

		Total No. recorded in this reporting period	Total No. recorded since project commencement
Air Quality (24-hr TSP)	Action	0	0
	Limit	0	0
Noise	Action	0	0
	Limit	0	0
Surface Water Quality	Action	0	0
	Limit	21	24

**Table G2** *Cumulative Statistics on Complaints, Notifications of Summons and Successful Prosecutions*

Reporting Period	Cumulative Statistics		
	Complaints	Notifications of Summons	Prosecutions
This Reporting Period (1 April - 30 June 2019)	0	0	0
Total no. received since project commencement	0	0	0